



Flat 15 Bayman Manor, Lye Green Road, Chesham, Buckinghamshire, HP5 3NF

Asking Price | £1,000

Property Features

- One Bedroom Apartment
- Recently Refurbished
- Communal Gardens
- Overlooks Fields
- Spacious Double Bedroom
- Modern Throughout
- Residents Parking
- Close to Chesham
- Unfurnished
- Available From Late October

Full Description

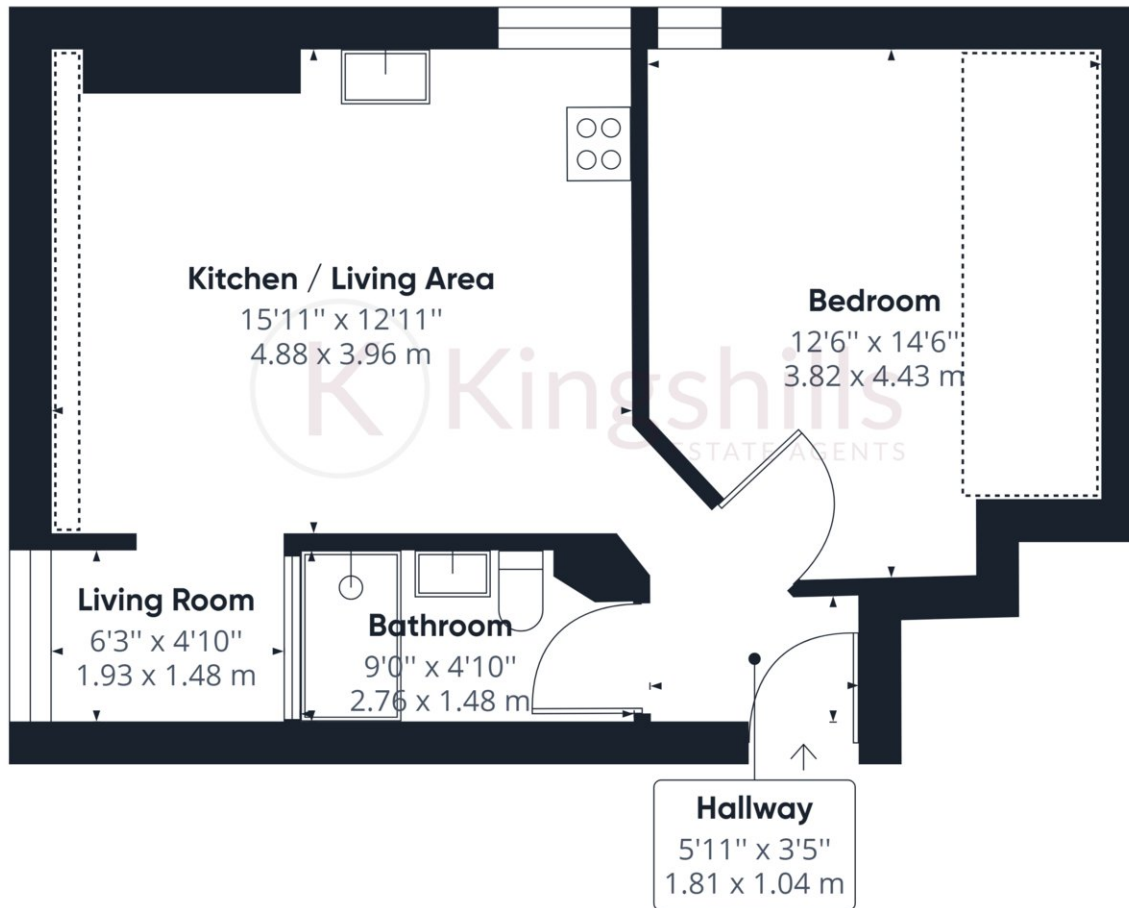
A recently refurbished one bedroom apartment in a converted Manor house, which benefits from use of the well-maintained communal gardens and overlooks fields. The property is located in a semi-rural area within a mile and half radius of the town centre and train station. The apartment offers a modern and open plan kitchen/living/dining area with a separate office area which enjoys views over the field, a spacious double bedroom and modern shower room.

Chesham is a charming market town in Buckinghamshire. Here, you can experience the perfect blend of urban convenience and natural beauty. The train line is just a short distance away, providing easy access to the London Underground Metropolitan Line. Commuting to London or other nearby cities is a breeze. The M25 motorway is within easy reach, offering excellent connectivity to the wider road network.

Chesham is surrounded by stunning countryside, making it a haven for nature enthusiasts. The Chiltern Hills Area of Outstanding Natural Beauty is on your doorstep, offering a myriad of walking and hiking trails. Explore the lush woodlands, rolling hills, and charming villages that make this area a paradise for outdoor activities.







Approximate total area⁽¹⁾

478.46 ft²
44.45 m²

Reduced headroom

63.58 ft²
5.91 m²

(1) Excluding balconies and terraces

 Reduced headroom
(below 1.5m/4.92ft)

While every attempt has been made to ensure accuracy, all measurements are approximate, not to scale. This floor plan is for illustrative purposes only.

GIRAFFE360