



1 Bedroom 1 bath Flat,  
Copy of Bayswater, London W2

<https://qinvestments.london>



## One Bedroom Apartment to rent near Hyde Park in Bayswater in London W2.

- High Ceilings
- Lift
- Super-fast Broadband
- Residents Private Garden
- Concierge Service

## Copy of Bayswater, London W2

One Bedroom Apartment to rent near Hyde Park in Bayswater in London W2.

This fully furnished one bedroom apartment is located within this stunning Grade II listed building with access to the beautiful private garden square, in one of the most prestigious areas of the city, with easy access to all the attractions and amenities that London has to offer.

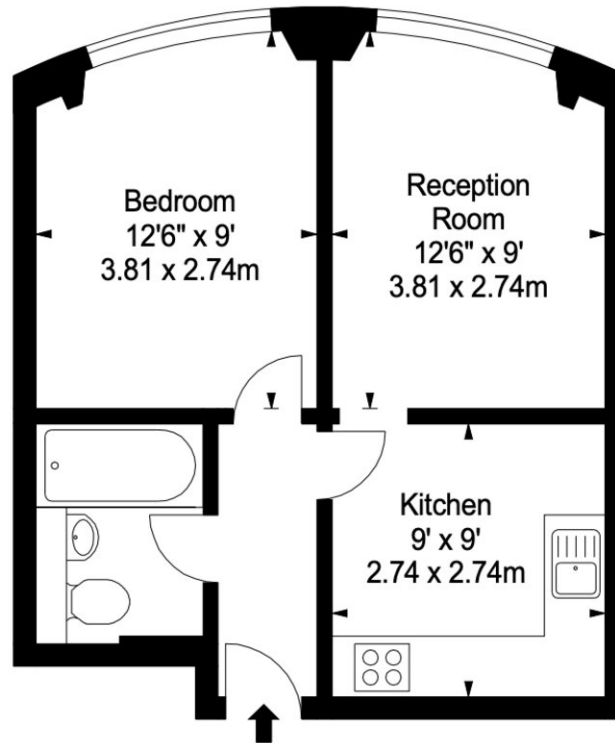
The apartment has been interior designed and finished to the highest of standards with high-end modern finishes whilst retaining its original Grade II listed features from the original building. The apartment comprises a bright and airy bedroom, a luxurious reception room with bespoke furniture, an exquisite polished marble bathroom and a fully fitted bespoke Miele kitchen.

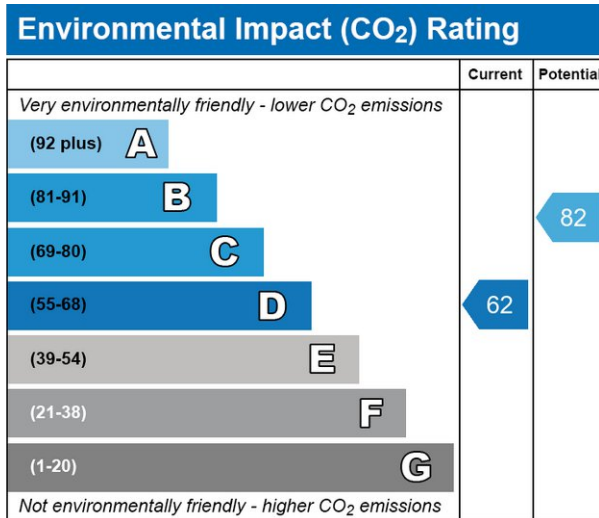
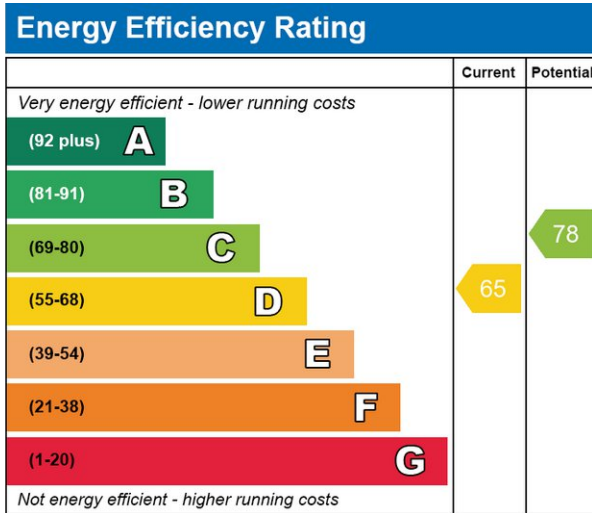
The building hosts 24-hour security, lift service, unique private access to Kensington Garden Square gardens and an emergency out of hour's maintenance service.

Council Tax band- E

EPC rating- D

Approx. Gross Internal Area \*  
384 Ft<sup>2</sup> - 35.67 M<sup>2</sup>





## CONTACT US

Have a question for us? Please get in touch.

## Q INVESTMENTS INTERNATIONAL LTD

T: +44 (0) 7985 487333

E: [office@qinvestments.london](mailto:office@qinvestments.london)

## INVESTMENTS, REAL ESTATE & LIFESTYLE

Stay connected

Please visit our social media pages.

You can now find us on [Facebook](#), [Twitter](#), [Linkedin](#) and [Instagram](#) and many more!