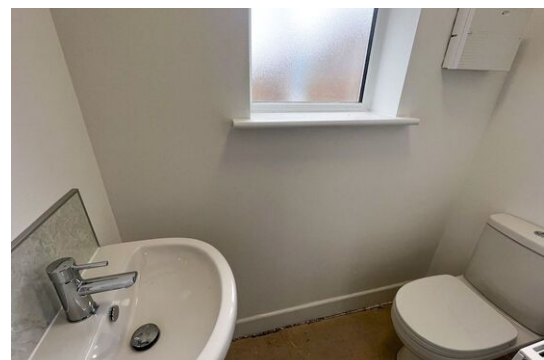
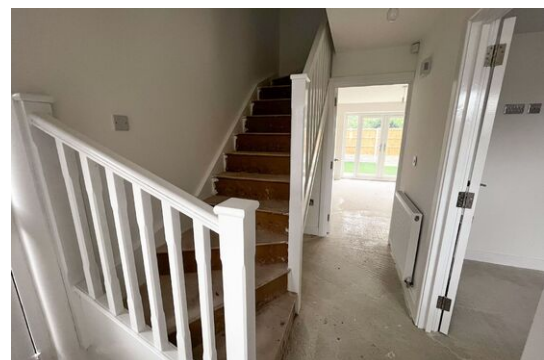


2 Marshall Street
Heanor
Derbyshire
DE75 7AT
01773715790
info@taylorbrownandsimms.co.uk
www.taylorbrownandsimms.co.uk

**TAYLOR BROWN
& SIMMS**

ESTATE AGENTS

The Close, Rainworth, Mansfield, Nottinghamshire , NG21 0DF
£235,000



FEATURES:

- NEW BUILD
- SEMI DETACHED
- THREE BEDROOMS
- THREE STOREY
- AVAILABLE NOW
- DOWNSTAIRS WC
- TWO PARKING SPACES
- REAR GARDEN
- GREAT LOCATION AND TRANSPORT LINKS
- VIEWING ESSENTIAL

COUNCIL TAX BAND: EPC RATING: B

Entrance Hallway
Stairs rising to the first floor, doors to lounge, kitchen and downstairs wc, radiator.

Downstairs WC
UPVC window to front, WC and hand wash basin, radiator.

Kitchen
3.45 m x 2.44 m (11'4" x 8'0")
UPVC window to front aspect, modern fitted kitchen comprising of base and wall units with roll top work surface, sink unit, integrated oven, hob and extractor above, integrated fridge freezer, dishwasher and washing machine, cupboard housing the boiler, radiator.

Lounge
4.42 m x 4.29 m (14'6" x 14'1")
UPVC french doors to rear garden, radiator.

First floor landing
Doors to bedrooms 2 and 3 and bathroom, stairs rising to the second floor, radiator.

Bedroom two
4.42 m x 2.82 m (14'6" x 9'3")

Two UPVC windows to rear aspect, radiator. build in storage cupboard.

Bedroom Three
3.15 m x 2.39 m (10'4" x 7'10")
Two UPVC windows to front, radiator.

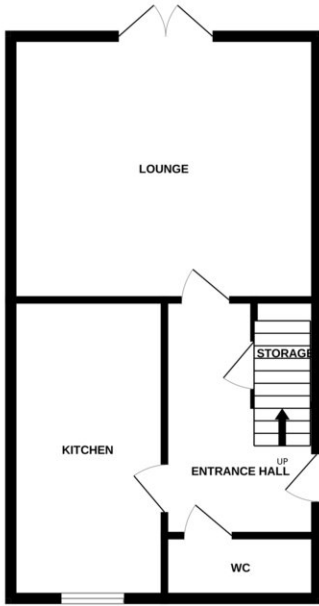
Bathroom
P Shaped bath with shower above, hand wash basin and WC, mermaid waterproof boarding around the bath, heated towel rail, extractor fan.

Second floor
Master Bedroom
4.47 m x 3.25 m (14'8" x 10'8")
UPVC window to front, skylight to the rear, radiator, door to en suite

En Suite
Skylight, three piece suite including WC, hand wash basin, and shower cubicle, radiator.

Outside
To the rear is a artificial grass garden with patio area, enclosed via panelled fencing with gated access leading to a parking area with two spaces and having a electric car charge point.

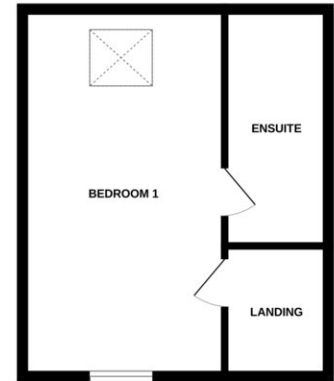
GROUND FLOOR



1ST FLOOR



2ND FLOOR



Whilst every attempt has been made to ensure the accuracy of the floorplan contained here, measurements of doors, windows, rooms and any other items are approximate and no responsibility is taken for any error, omission or mis-statement. This plan is for illustrative purposes only and should be used as such by any prospective purchaser. The services, systems and appliances shown have not been tested and no guarantee as to their operability or efficiency can be given.
Made with Metropix ©2024

NOTICE TO PROSPECTIVE PURCHASERS

Please note that the information contained within this brochure is understood to be correct and accurate to the best of Taylor Brown & Simms Estate Agents knowledge. However, the information and measurements should not be relied upon to form any part of a contract or any offer made. The information offered is for guidance only particularly in relation to any listed appliances being in full working order. Purchasers should make their own investigations to verify correctness of same particularly if they intend to purchase the property for a specific use or purpose. The information contained within the brochure should not be republished or copied in any way for any other form of advertising or use without Taylor Brown & Simms permission.