



16 Avon Close Taunton TA1 4SU

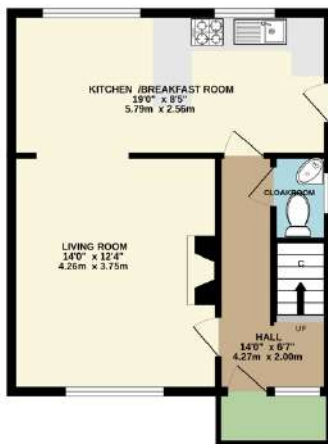
£300,000



## Features

- Entrance Hall
- Living Room
- Kitchen / Breakfast Room with door to garden
- Cloakroom
- Master Bedroom
- 2 Further Bedrooms
- Family Bathroom
- Gardens to front and rear
- Garage and driveway parking
- Double glazing
- Gas central heating
- Castle School catchment
- No onward chain
- Council tax band C
- What3words: [///torn.clap.snows](https://www.what3words.com/#!/torn.clap.snows)

GROUND FLOOR  
417 sq.ft. (38.8 sq.m.) approx.

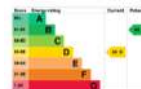


1ST FLOOR  
424 sq.ft. (39.4 sq.m.) approx.

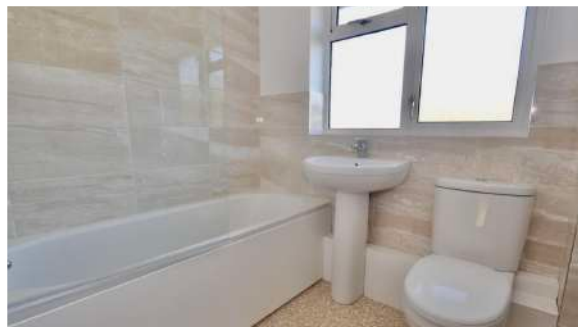


TOTAL FLOOR AREA: 841 sq.ft. (78.1 sq.m.) approx.

While every attempt has been made to ensure the accuracy of the floorplans contained here, measurements of floors, windows, doors and any other items are approximate and no responsibility is taken for any error, omission or mis-statement. This plan is for illustrative purposes only and should be used as such by any prospective purchaser. The services, systems and appliances shown have not been tested and no guarantee as to their operability or efficiency can be given. Made with MyPlanSpace 2022



Situated in this cul-de-sac location within Castle School catchment is this South facing 3 bedroomed semi-detached house with gardens to front and rear, garage and driveway parking. No onward chain.



Viewing strictly through the selling agents:

**Robert Cooney**

Corporation Street, Taunton,  
Somerset TA1 4AW

Telephone 01823 230 230

E-mail [taunton@robertcooney.co.uk](mailto:taunton@robertcooney.co.uk)

Website [www.robertcooney.co.uk](http://www.robertcooney.co.uk)

**robert  
cooney**