



Flat 2 Treadaway Court, Loudwater, High Wycombe, Buckinghamshire, HP10 9QL

Asking Price | £1,200

## Property Description

This stylish and contemporary nearly new one-bedroom apartment located on the outskirts of High Wycombe. This lovely modern home features a secure entry system and an allocated parking space for the resident.

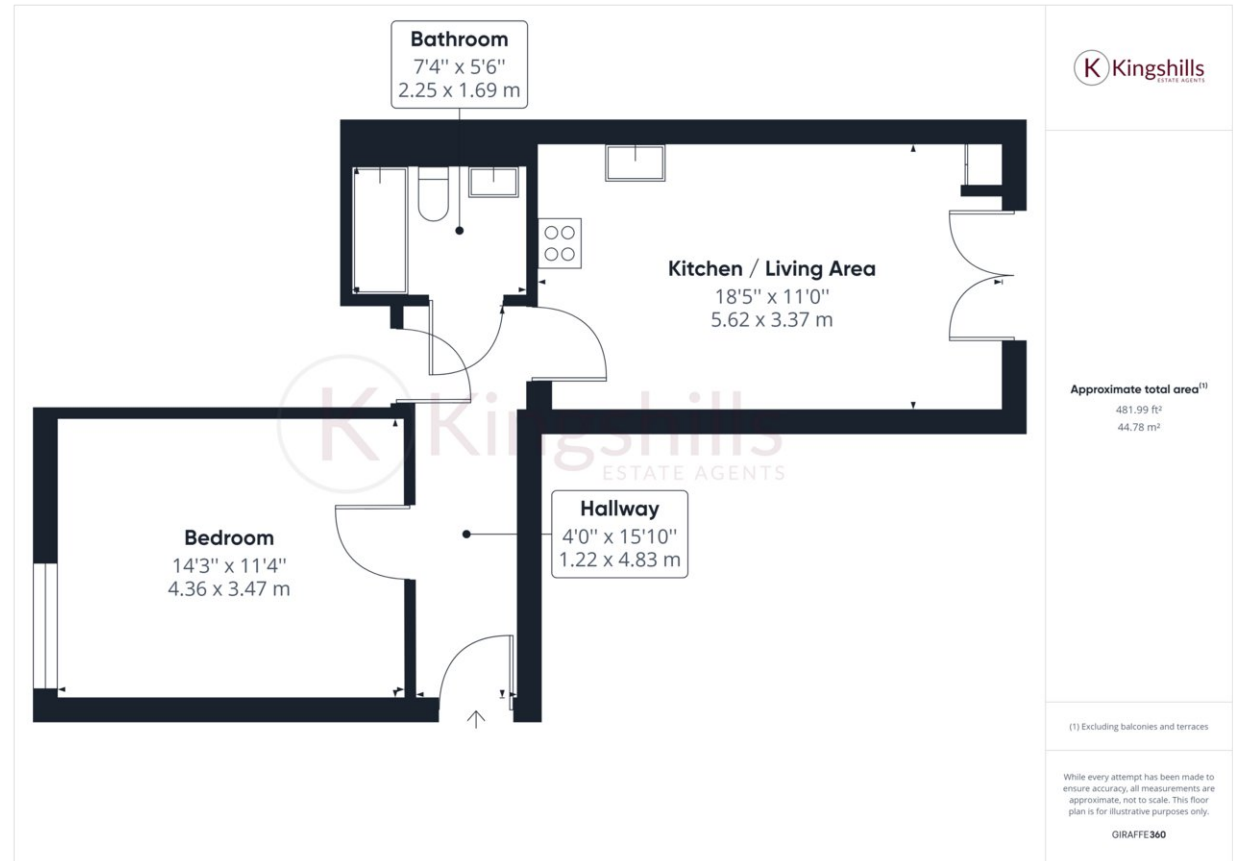
The apartment is immaculately presented and comprises of an open-plan living/kitchen/dining area that is spacious and well-lit with natural light and benefits from a Juliet Balcony of the Living area. The modern kitchen is fully equipped with a built-in oven and hob, fridge and washing machine. The large double bedroom is well-proportioned and is overlooking the front aspect.

The property boasts a prime location just a short distance from Kingsmead playing fields and benefits from excellent transport links to London and the surrounding areas. The apartment is within a short drive to the High Wycombe Train Station, which operates a fast and reliable Chiltern Railways service; this enables easy access to London Marylebone in less than half an hour.

High Wycombe town centre offers a variety of shopping opportunities ranging from high-street stores to independent boutiques and also features a cinema, restaurants, and a mix of cultural amenities. High Wycombe town centre also provides a mix of upbeat nightlife, serving the communities with its fine pubs and bars.

COUNCIL TAX B

EPC RATING C



Kingshills Estate Agents  
Comet Studios  
Amersham  
Buckinghamshire  
HP7 0PX

01494 939868  
hello@kingshills.co.uk  
kingshills.co.uk

Agents Note: Whilst every care has been taken to prepare these particulars, they are for guidance purposes only. All measurements are for general guidance purposes only and whilst every care has been taken to ensure accuracy, they should not be relied upon and potential buyers/tenants are advised to recheck the measurements