



8 Hughenden Court, Penn Road, Hazlemere, Buckinghamshire, HP15 7BP

Asking Price | £205,000

Property Features

- Ground Floor Apartment
- Private Patio area
- Double Bedroom with Wardrobes
- Large Living Room
- Fitted Kitchen
- Shower Room
- Lovely Communal Gardens
- Communal Living Area & In House Manager
- Close to Hazlemere Crossroads
- EPC Rating B

Full Description

A 1 bedroom ground floor apartment located in this exclusive development by McCarthy and Stone and exclusively for the over 60s. This particular plot benefits from its own private patio area but also has the use of the well kept and beautiful communal gardens.

Hughenden Court is just a short distance from Hazlemere Crossroads where there is a range of amenities including Doctors, Newsagents, Vets, Pharmacy and bus routes to High Wycombe and Amersham. The development itself has a in house manager that arranges many activities for the residents which all have use of the communal Living Room, Laundry Room and Kitchen. There is also a room for relatives to stay overnight for a small fee.

Accommodation

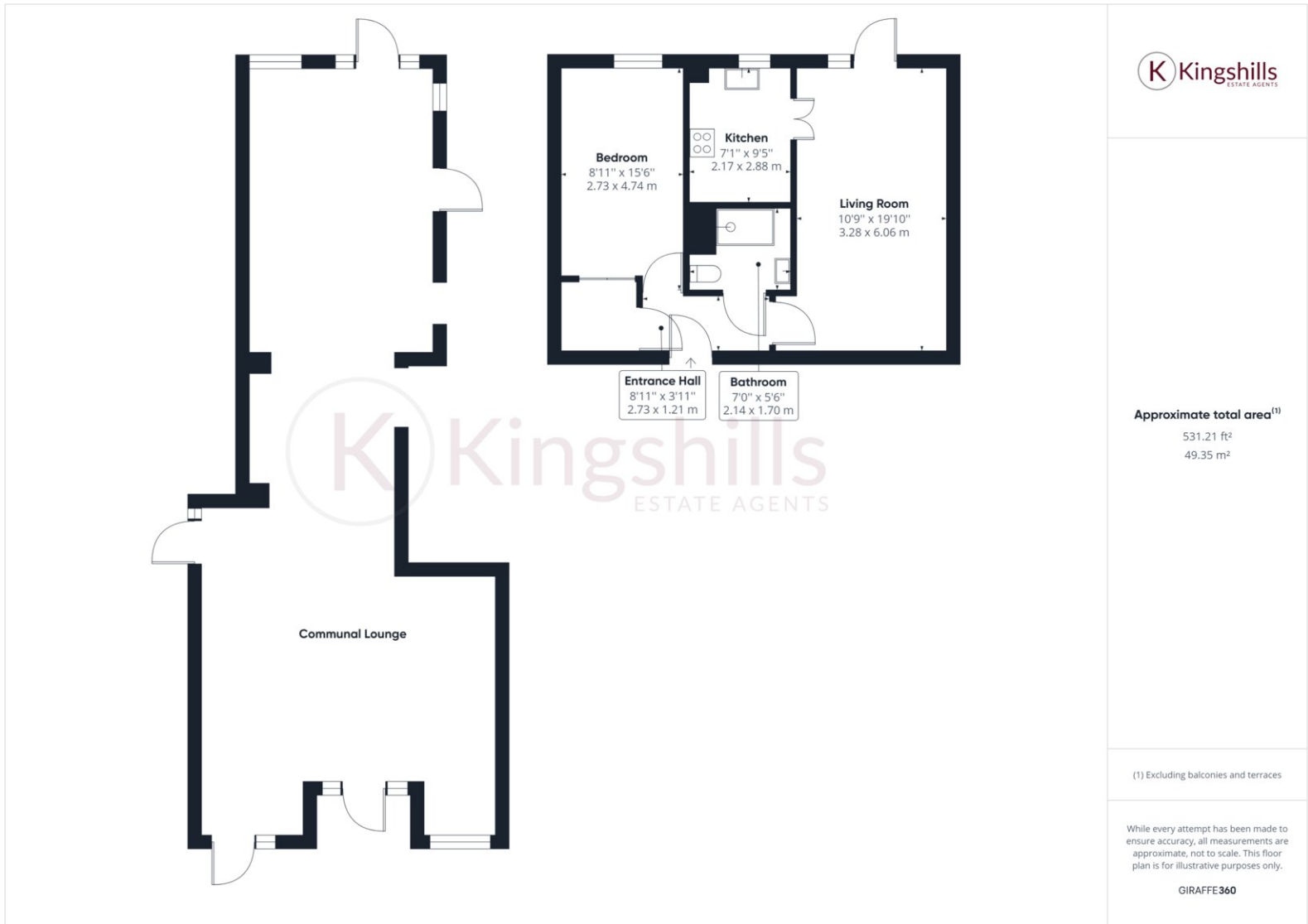
Entrance Hall, Living Room with doors leading to a private Patio area, Kitchen with fitted appliances, Double Bedroom with fitted wardrobes, Shower Room. Each room has pull cords that alert the manager and the 24 hour Careline Emergency System.

Service Charge is circa £3000 per annum. Ground Rent is TBC

Parking can be leased for a fee of circa £250 per year







Approximate total area⁽¹⁾

531.21 ft²
49.35 m²

(1) Excluding balconies and terraces

While every attempt has been made to ensure accuracy, all measurements are approximate, not to scale. This floor plan is for illustrative purposes only.

GIRAFFE360

Aston Court
Kingsmead Business Park
High Wycombe
Buckinghamshire
HP11 1JU

01494 939868
hello@kingshills.co.uk
kingshills.co.uk

Agents Note: Whilst every care has been taken to prepare these particulars, they are for guidance purposes only. All measurements are for general guidance purposes only and whilst every care has been taken to ensure accuracy, they should not be relied upon and potential buyers/tenants are advised to recheck the measurements