



Q Investments  
International

1 Bedroom Apartment / Flat  
Marylebone

£2,253 per month  
<https://qinvestments.london>

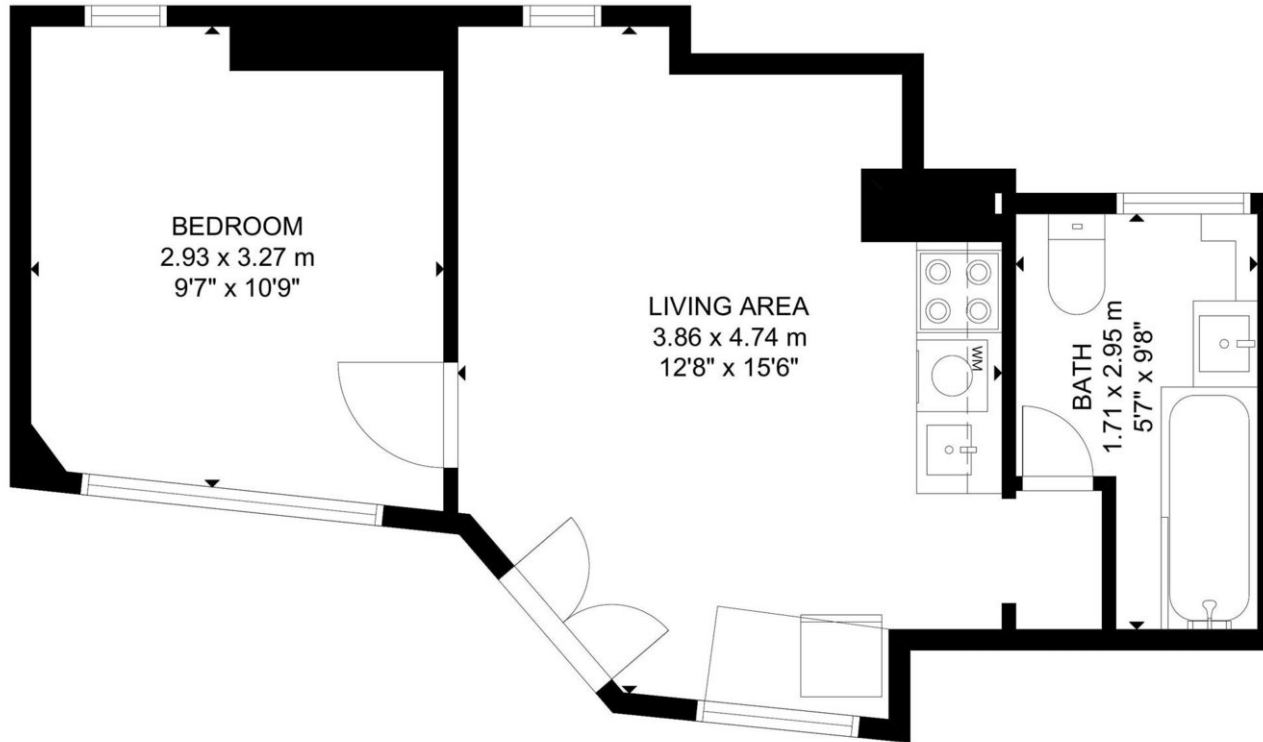


## London, Marylebone

A newly refurbished 1 bedroom apartment located on a ground floor in a prestigious mansion building next to Regents Park.

For more information call or WhatsApp +447985487333  
Ref. RLSC20

With such a fabulous location in the heart of St John's Wood, this apartment offers potential tenants the opportunity to live in a prime location and enjoy many features including portage, lift access, a dedicated building manager and stunning views over Regent's Park.



GROUND FLOOR

GROSS INTERNAL AREA  
TOTAL: 31 m<sup>2</sup>/331 sq ft  
GROUND FLOOR: 31 m<sup>2</sup>/331 sq ft  
SIZE AND DIMENSIONS ARE APPROXIMATE, ACTUAL MAY VARY.

