



Riversdale Ruishton TA3 5JW





Riversdale is a South facing, four bedroomed & well-proportioned classical Georgian house. Packed with original features that you would expect in a Grade II listed property, it lies in the centre of this popular village, which is conveniently located outside Taunton. The house sits in private mature gardens & grounds of about an acre, featuring attractive river frontage. Completing the picture is a range of outbuildings, including a coach house with potential for development subject to the necessary permissions.





Features

- Entrance Hall
- Drawing Room with period style fireplace
- Dining Room with original shutters and fireplace
- Fitted Kitchen with Britannia Range style cooker and Belfast sink
- Study / Living Room with inglenook fireplace
- Garden / Breakfast Room with French doors to garden
- Utility Room with door to garden
- Cloakroom
- Master Bedroom with fireplace and fitted wardrobes
- 3 further Bedrooms
- Spacious Family Bathroom with his and hers basins
- Second Family Bathroom

- Established gardens and grounds of about an Acre with river frontage, kitchen garden and small original stone bothy with partly covered terrace
- Garage and ample driveway parking
- Detached former Coach House with potential for development subject to necessary permissions currently providing garaging, workshop and loft

- Gas central heating
- Council tax band F

- What3words:
[///breated.thought.cobras](https://www.what3words.com/?q=///breated.thought.cobras)







Riversdale is situated in the village of Ruishton with its range of amenities including church, primary school, nursery, pub, village hall and lively village community and lies approximately 3 miles of the centre of Taunton, the County Town of Somerset.

Taunton is a bustling, forward-looking town with excellent amenities, a good selection of independent and high street shops, distinctive restaurants, cafés, a wealth of history and sporting facilities including the County Cricket Ground.

Taunton benefits from excellent transport links, with the main line railway station linking to London Paddington in less than 2 hours and the M5 motorway at junction 25, situated on the eastern side of the town.

The local area provides excellent opportunities for walking, riding and other rural pursuits with an abundance of footpaths and bridleways.



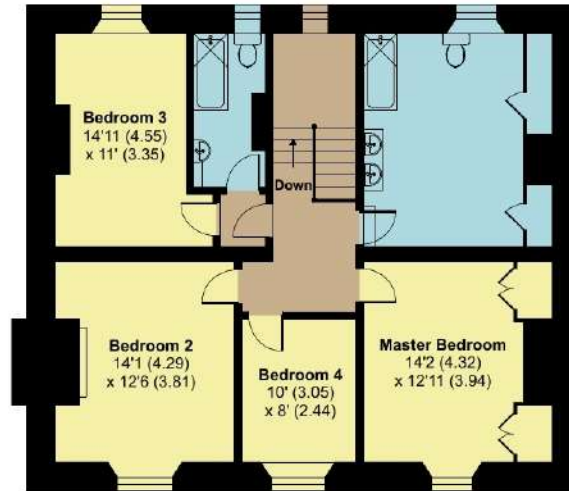
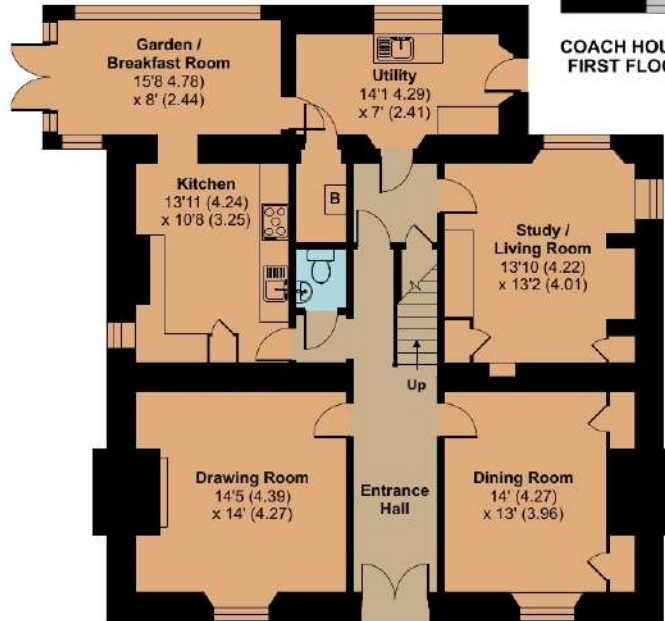
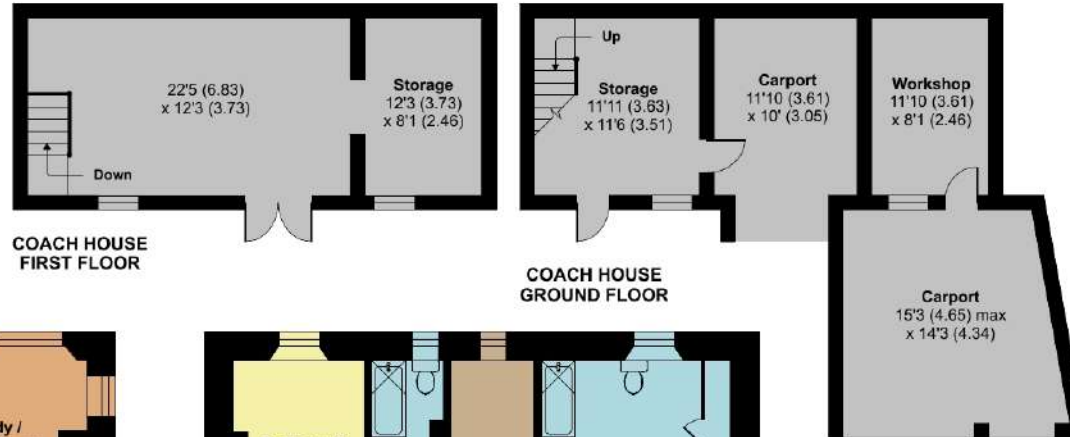
Riversdale, Ruishton, Taunton, TA3 5JW

Approximate Area = 2350 sq ft / 218.3 sq m

Outbuilding = 631 sq ft / 58.6 sq m

Total = 2981 sq ft / 276.9 sq m

For identification only - Not to scale



Viewing strictly through the selling agents:

Robert Cooney

Corporation Street, Taunton,
Somerset TA1 4AW

Telephone 01823 230 230

E-mail taunton@robertcooney.co.uk

Website robertcooney.co.uk



Certified Property Measurer

Floor plan produced in accordance with RICS Property Measurement Standards incorporating International Property Measurement Standards (IPMS2 Residential). © n1che.com 2024. Produced for Robert Cooney. REF: 1092078

For clarification, we wish to inform prospective purchasers that: these particulars are set out as a general outline only for the guidance of intended purchasers, and do not constitute, nor constitute part of, an offer or contract; all descriptions, dimensions, references to condition and necessary permission for use and occupation, and other details, are given without responsibility and any intending purchasers should not rely on them as statements or representation of fact, but must satisfy themselves by inspection or otherwise as to the correctness of each of them; no person in the employment of Robert Cooney has any authority to make or give any representation or warranty whatever in relation to this property; we have not carried out a detailed survey nor tested the services, appliances and specific fittings.

robert
cooney

