



W1 PLACE

LONDON



A place to call home, in an unparalleled location.
W1 Place - your door onto one of London's great streets.

PINEBROOK ESTATES
4TH FLOOR SILVERSTREAM HOUSE, FITZROVIA, LONDON W1T 6EB
M: (+44) 7863 172705 T: (+44) 20 3727 7977 E: sales@pinebrookestates.co.uk

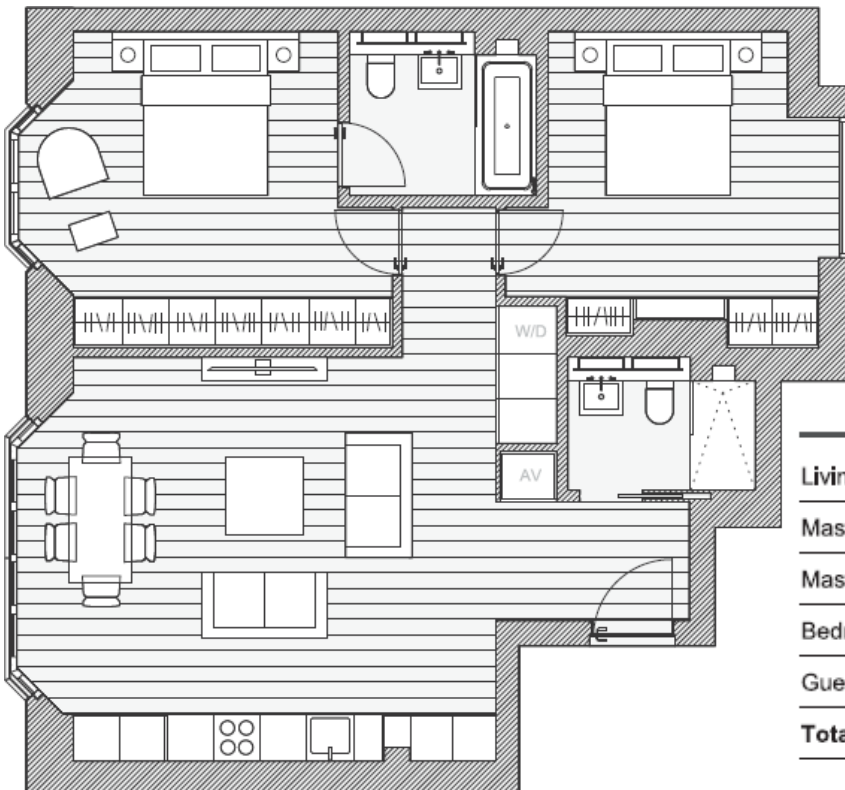
W1 PLACE

LONDON

A601

Designed from the inside out, and with an enviable central London location, W1 Place is perfect for the discerning individual, the professional couple and the modern family. The highly crafted quality throughout the building means you'll be feeling that reassuring click with every door you close, and the satisfying sound of your feet on the oak floor. Light pours in through the floor-to-ceiling bay windows, creating a sense of both openness and warmth, while the open-plan living and kitchen areas provide a thoroughly modern space to host your friends or enjoy a cosy night in. This two-bedroom apartment provides luxurious living, designed with you at the heart.

Floor	Unit	Apartment Area	Bal/ Terr (sqft)	Total Area (sqft)	Rooms	Aspect	Price
Sixth	A601	891	N/A	891	2 beds	W	£3,208,000



Living/Kitchen/Dining	6.1m x 5.1m
Master Bedroom	4.8m x 4.1m
Master Bathroom	2.4m x 1.8m
Bedroom 2	4.1m x 4m
Guest Bathroom	2.4m x 1.4m
Total	82.8m²
	891sqft

PINEBROOK ESTATES

4TH FLOOR SILVERSTREAM HOUSE, FITZROVIA, LONDON W1T 6EB

M: (+44) 7863 172705 T: (+44) 20 3727 7977 E: sales@pinebrookestates.co.uk

W1 PLACE

LONDON



PINEBROOK ESTATES

4TH FLOOR SILVERSTREAM HOUSE, FITZROVIA, LONDON W1T 6EB

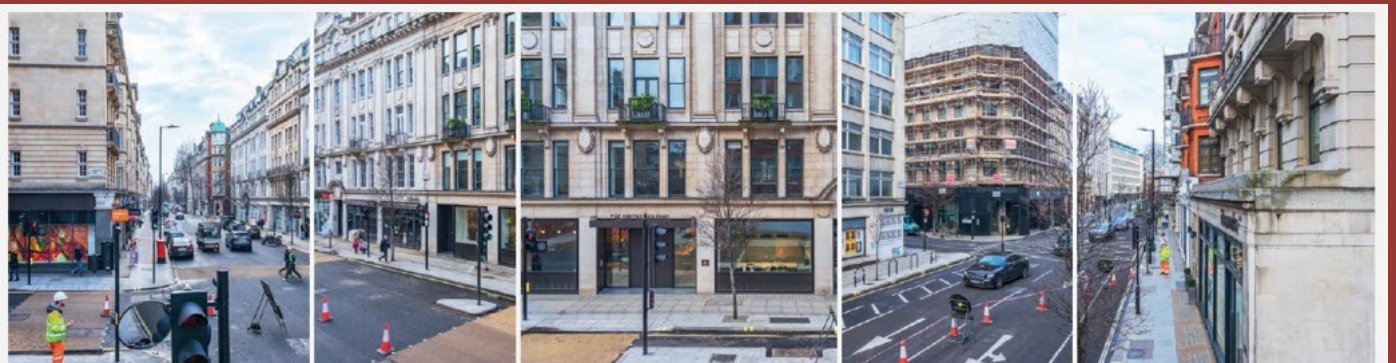
M: (+44) 7863 172705 T: (+44) 20 3727 7977 E: sales@pinebrookestates.co.uk

W1 PLACE

LONDON



VIEWS FROM THE APARTMENT



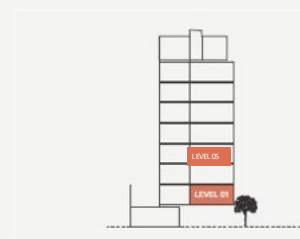
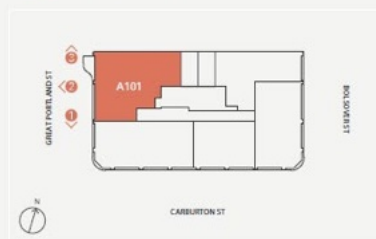
1 GREAT PORTLAND ST (SOUTH)

2 GREAT PORTLAND ST (WEST)

3 GREAT PORTLAND ST (NORTH)

A101 2 BEDROOM APARTMENT LEVEL 01

The apartment has a single aspect facing West.



PINEBROOK ESTATES

4TH FLOOR SILVERSTREAM HOUSE, FITZROVIA, LONDON W1T 6EB

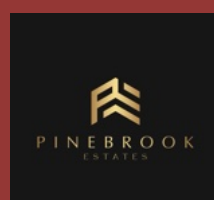
M: (+44) 7863 172705 T: (+44) 20 3727 7977 E: sales@pinebrookestates.co.uk

W1 PLACE

LONDON



Disclaimer: The information in this document is intended to act as a guide only as to the finished product. This document does not constitute a contract or warranty nor does it provide any guarantee on the accuracy or completeness. All matters will be governed by the applicable purchase and sales agreement. All illustrations and computer-generated images reflect the artists' interpretation of the project and do not take into account the neighbouring buildings, physical structures, streets and landscape. The developer reserves the right to make modifications and changes to the project including but not limited to architectural and interior features and finishes, brands, colours, materials, building design, specifications, ceiling heights, flooring patterns and floor plans without notification. Actual apartment plans and dimensions may have minor variations to, or shown as mirror image of the typical plans presented in this document and are not intended to be used for carpet sizes or items of furniture. Area measurements in this document are given as Gross Internal Area (GIA).



(+44) 20 3727 7977



www.pinebrookestates.co.uk



info@pinebrookestates.co.uk