



1 Bedroom 1 bath Apartment / Flat,
Merchant Square, Paddington, London W2

<https://qinvestments.london>



The apartment is an interior designed and fully furnished one-bedroom apartment located in Merchant Square, Paddington Basin, with beautiful canal views and close

- **Virtual 3D Tour available**
- **Size: 533 square feet**
- **AC/comfort cooling**
- **Lift**
- **Luxury furniture and fully fitted kitchen**
- **Porter and building manager on site**
- **24/7 emergency line**
- **Underground Parking**

Merchant Square, Paddington, London W2

Welcome to this stunning interior designed apartment located in the heart of London's Paddington Basin, available for rent in the highly sought-after Merchant Square.

This beautiful apartment is situated on the fifth floor of a portered building and is fully furnished to the highest standard, boasting 533 square feet of luxurious living space.

The modern and contemporary Merchant Square development comprises 60 luxury apartments ranging from one to four bedrooms set over 15 storeys, with many offering gorgeous views of the canal and London's skyline. The building also features a concierge service, 24/7 security, and beautifully landscaped outdoor garden spaces for residents to enjoy.

The apartment itself is tastefully designed and furnished, featuring comfort cooling and a fully equipped kitchen. The living area is bright and spacious with large windows, allowing natural light to flood the room, and comes with a comfortable sofa, coffee table, and a flatscreen TV for ultimate relaxation.

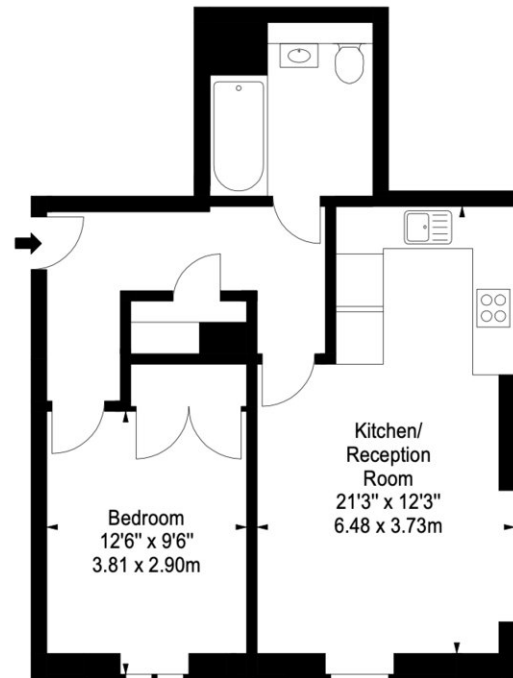
The fully fitted kitchen is equipped with high-end appliances and everything you need to cook your favourite meals. The kitchen also includes a dining table with seating for four, perfect for entertaining friends and family.

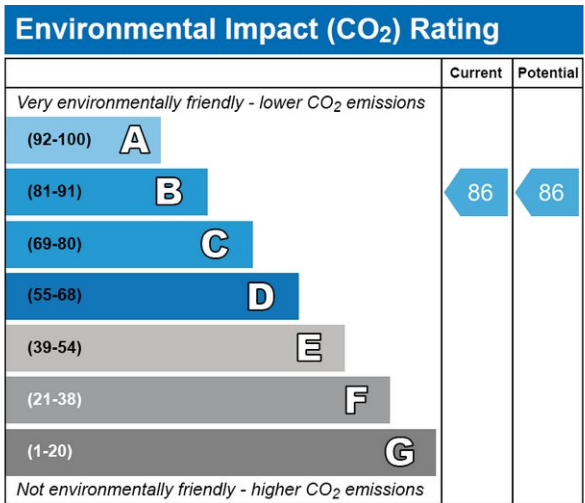
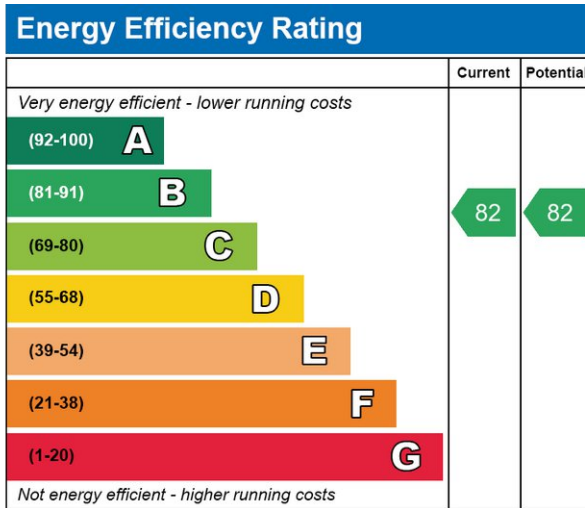
The bedroom is elegantly decorated and features a comfortable double bed with high-quality linens, making for a perfect night's sleep. The room also includes a large built-in wardrobe for ample storage space.

The luxurious bathroom is finished to a high standard and includes a shower, bathtub, and modern fixtures and fittings.

This apartment is ideally located for those who want to enjoy everything central London has to offer. With Marylebone High Street, Oxford Street, Regent Street, and Connaught Village all within easy walking distance, there's no shortage of international restaurants and shopping destinations to explore. Moreover, the beautiful and historic Hyde Park, London's largest Royal Park, is just a short stroll away, as well as the stunning gardens of Kensington Palace.

In summary, this is a rare opportunity to live in a luxurious and stylishly designed apartment in the heart of London's Paddington Basin. With its prime location and beautiful canal views, this apartment is sure to impress. So, what are you waiting for? Call or WhatsApp us now at +447985487333 to schedule a viewing and experience the ultimate in modern city





CONTACT US

Have a question for us? Please get in touch.

Q INVESTMENTS INTERNATIONAL LTD

T: +44 (0) 7985 487333

E: office@qinvestments.london

INVESTMENTS, REAL ESTATE & LIFESTYLE

Stay connected

Please visit our social media pages.

You can now find us on [Facebook](#), [Twitter](#), [Linkedin](#) and [Instagram](#) and many more!