

HOME



Chelmsford
£230,000
2-bed first floor apartment

Jeffcut Road

This stunning apartment located in Chelmer Village, Essex is the perfect place to call home. With two good sized bedrooms this property provides ample space for small families or couples. The modern decor and fittings throughout the apartment make it feel luxurious and on-trend.

Features of this property include electric heating (see agents note) and an allocated parking space - always a bonus for residents in the area. Additionally, the main bedroom boasts fitted wardrobes to make the most of the space. With a complete onward chain, this apartment is ready and waiting for you to move in and make it your own!

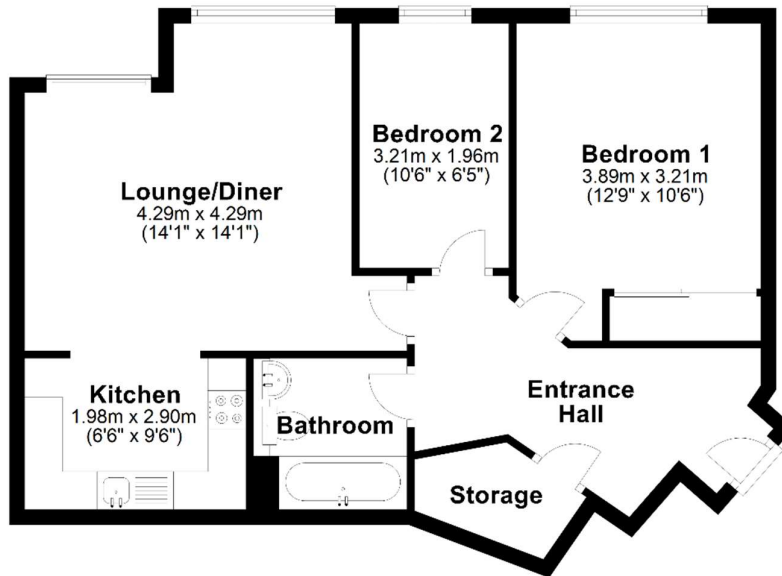
Chelmsford
11 Duke Street
Essex CM1 1HL

Sales
01245 250 222
Lettings
01245 253 377
Mortgages
01245 253 370

thehomepartnership.co.uk

Agents Note: The electric heater in bedroom 2 is specifically excluded from the sale and will be removed on completion by the seller.

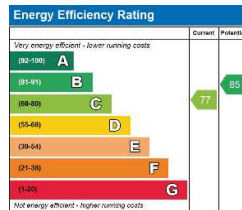
First Floor



Features

- Complete onward chain
- Two good sized bedrooms
- Modern throughout
- Electric heating
- Allocated parking space
- Fitted wardrobes to the main bedroom
- 0.1 Mile walk to Chelmer Village Retail Park
- 1.4 Mile Walk to Chelmsford station
- White bathroom suite

EPC Rating



The Nitty Gritty

Tenure: Leasehold

Council Tax: The Council tax band for the property is Band B with an annual amount of £1,751.20.

Lease length: 125 years from 1/1/1999 expiring on 31/12/2123 with 98 years remaining.

Ground rent: £120 per annum and increases based on the 'Capital value' of the property every 25 years of the term.

Service charge: For 01/07/2022 to 31/12/2022 is £717.83. The seller has advised us this is paid in monthly instalments. The service charge is reviewed annually.

As an integral part of the community, we've gotten to know the best professionals for the job. If we recommend one to you, it will be in good faith that they'll make the process as smooth as can be. Please be aware that a small number of the parties we recommend (certainly not the majority) may on occasion pay us a referral fee up to £200. You are under no obligation to use a third party we have recommended.

