



HAFDRE

Swyddffynnon | Ystrad Meurig | Ceredigion | SY25 6AL



HOMES
— OF WALES —

HAFDRE

HAFDRE

We are delighted to offer the commodious residence of Hafdre onto the market. This four bedroomed, end terraced Cottage with 1/4 of an acre, is situated in a rural Hamlet in the West Wales countryside, close to Lampeter, Tregaron and Aberystwyth. In addition to the spacious and characterful accommodation, there is usefully an attached one bedroom Cottage suitable for a variety of uses.

This large home also benefits from a study / reception room, cozy sitting room, good size kitchen with adjacent dining room, utility room, cloakroom and to the first floor, four good sized bedrooms. The one bedroom cottage has its own entrance door and rear garden. Hafdre also enjoys a very significant and well maintained rear garden area in two parts, one of which is bordered by a stream and has excellent home growing areas (the owners will be leaving a large polytunnel, fruit and vegetable beds) and to the rear of the property, there is also a significant sized double garage ideal for workshop area as well as parking two vehicles. The property has been re-engineered with air source heat pump & solar panels generating electricity and enjoys an EPC rating of A. viewing highly recommended to appreciate the space and character on offer with this property in this delightful rural setting.

Video Link: <https://youtu.be/-FaBaTLeW8A>





Energy Efficiency Rating

	Current	Potential
Very energy efficient - lower running costs		
(92 plus) A	92	95
(81-91) B		
(69-80) C		
(55-68) D		
(39-54) E		
(21-38) F		
(1-20) G		
Not energy efficient - higher running costs		

































About Homes of Wales



Homes of Wales, a proud member of the Nigel Salmon Group of Real Estate Agencies, including Fine and Country West Wales, is dedicated to offering the finest countryside, luxury, and unique properties in Ceredigion, Pembrokeshire, and throughout West Wales. Our coverage includes key locations such as Aberystwyth, Tregaron, Lampeter, Aberaeron, Newquay, Cardigan Bay, and the surrounding villages and areas.

Our team at Homes of Wales brings extensive regional knowledge and exceptional service to both buyers and sellers. With a profound understanding of local markets, we provide accurate, up-to-date advice on trends and opportunities within the West Wales property market.

West Wales is renowned for its tranquil, rural, and unspoiled beauty, offering a peaceful escape with low crime rates, pristine beaches, and strong family values. We present a diverse range of properties, including country houses, old farmhouses, large character homes, and cottages to suit various tastes and budgets.

At Homes of Wales, we specialize in the luxury property market across Ceredigion. Our mission is to achieve the best results for our clients, whether they are buying or selling.

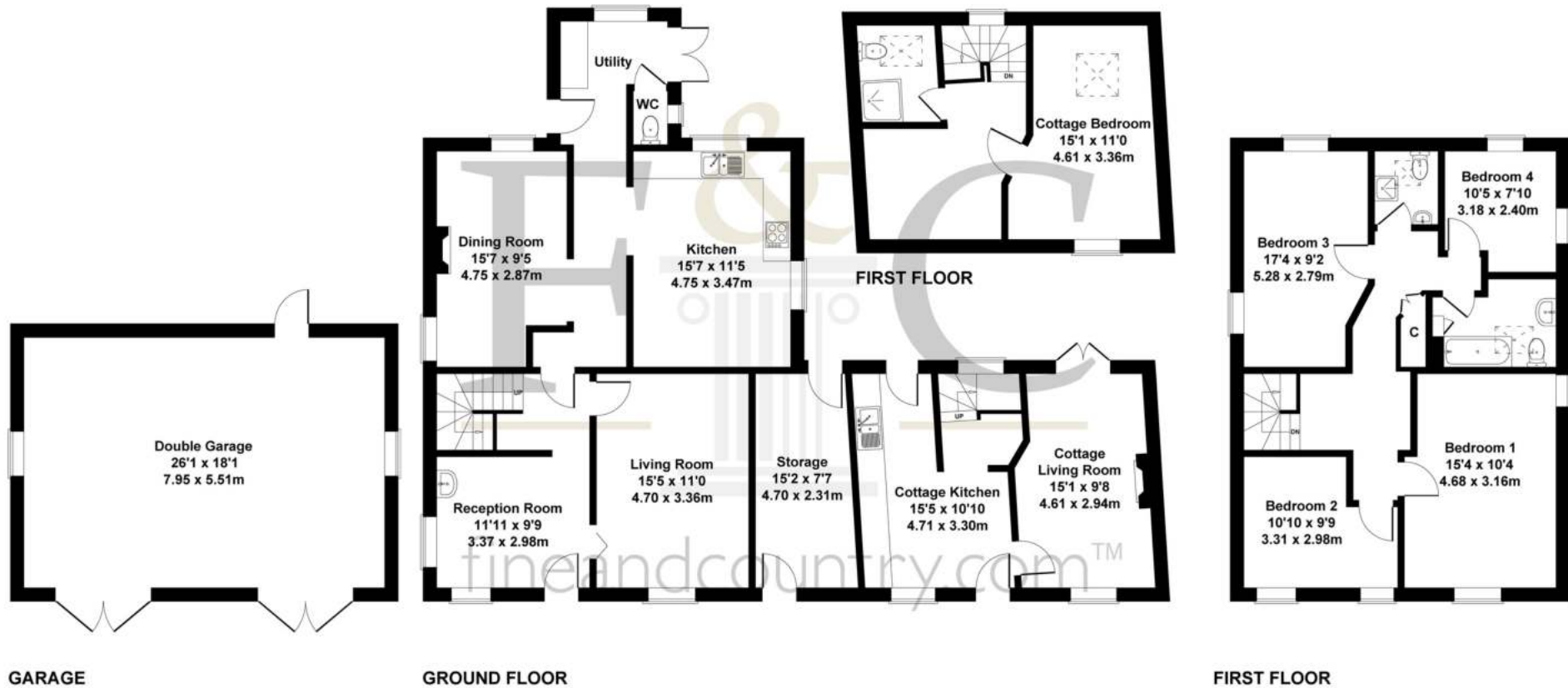
For sellers, we offer tailored strategies and free marketing advice to help you secure the best price for your home. Our Re-Launch Strategy is designed for properties that have been on or off the market for an extended period, ensuring maximum exposure and results, all handled with complete confidentiality. We are passionate about helping you find your dream home or achieve the highest value for your property. Contact us today to begin your journey with Homes of Wales. We look forward to hearing from you. For any inquiries, please reach out to our office at 01974 299055 or hello@homesofwales.com.

Follow us on our socials



Hafdre , Swyddffynnon Ystrad Meurig Ceredigion SY25 6AL

Approximate Gross Internal Area
2788 sq ft - 259 sq m



SKETCH PLAN FOR ILLUSTRATIVE PURPOSES ONLY

All measurements walls, doors, windows, fittings and appliances, their sizes and locations, are approximate only. They cannot be regarded as being a representation by the seller, nor their agent.

Produced by Potterplans Ltd. 2024



Homes of Wales

The Gallery, Station Approach, Station Building, Aberystwyth, SY23 1LH

Tel: 01974 299 055 | hello@homesofwales.com



HOMES
— OF WALES —