





MAISON HAUS
MOVE & LETTINGS


FRESHWATER DRIVE

Wychwood Park

CONTACT US

 The Place, Mill Lane, Alderley Edge, Cheshire SK9 7TY

 moving@maison.haus

 01625 919 079

Freshwater Drive

- Approximately 3,500 sqft of Living Space
- Wrap Around Gardens
- Breathtaking Master Suite
- Double Garage with Bedroom Above
- PGA Tour Standard Golf Course On Site
- Extensive Driveway for Multiple Vehicles



Wychwood

Park

Nestled within the highly regarded The Vistas area of the executive gated development of Wychwood Park this impressive detached house, being one of the larger house types on the whole estate with approximately 3500 sqft (325sqm) of beautiful living accommodation. Offering everything you would want in a prestigious family home. Impeccably presented and improved throughout, the property offers tasteful newly decorated interior with extensive living space over three floors.

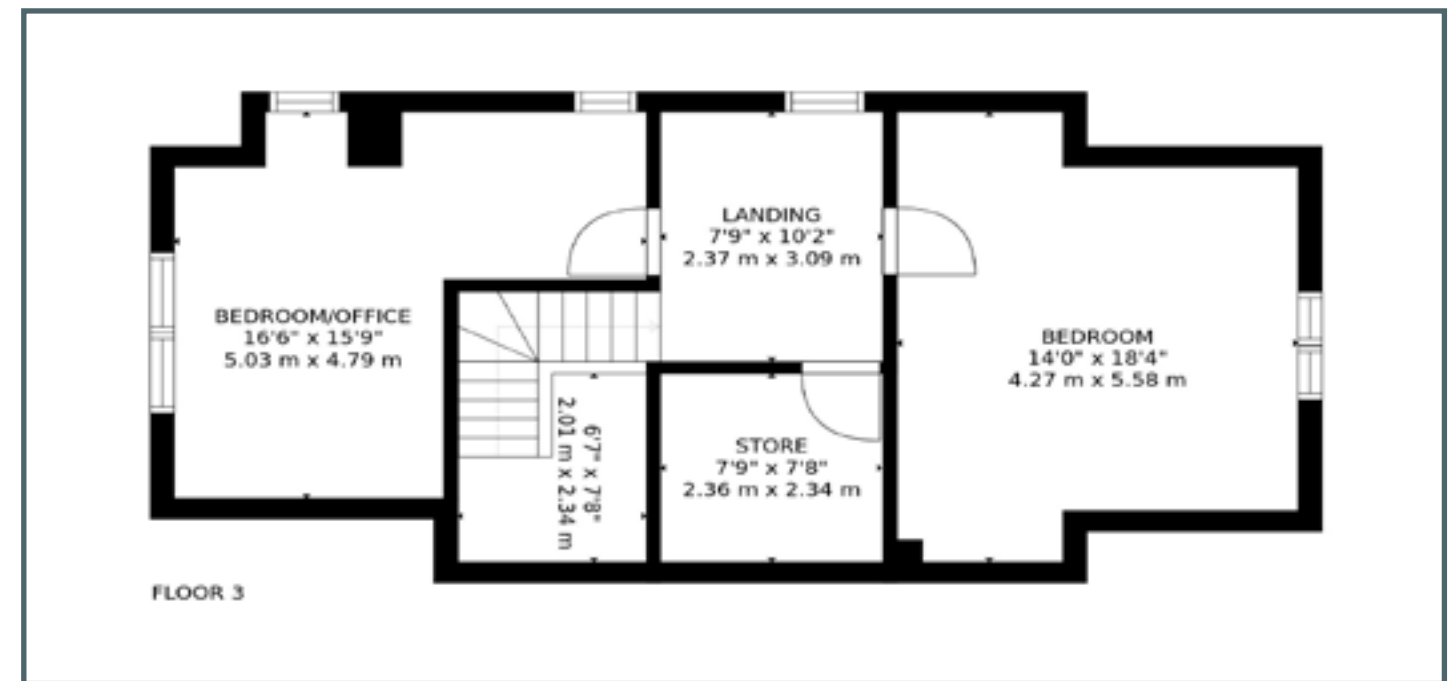
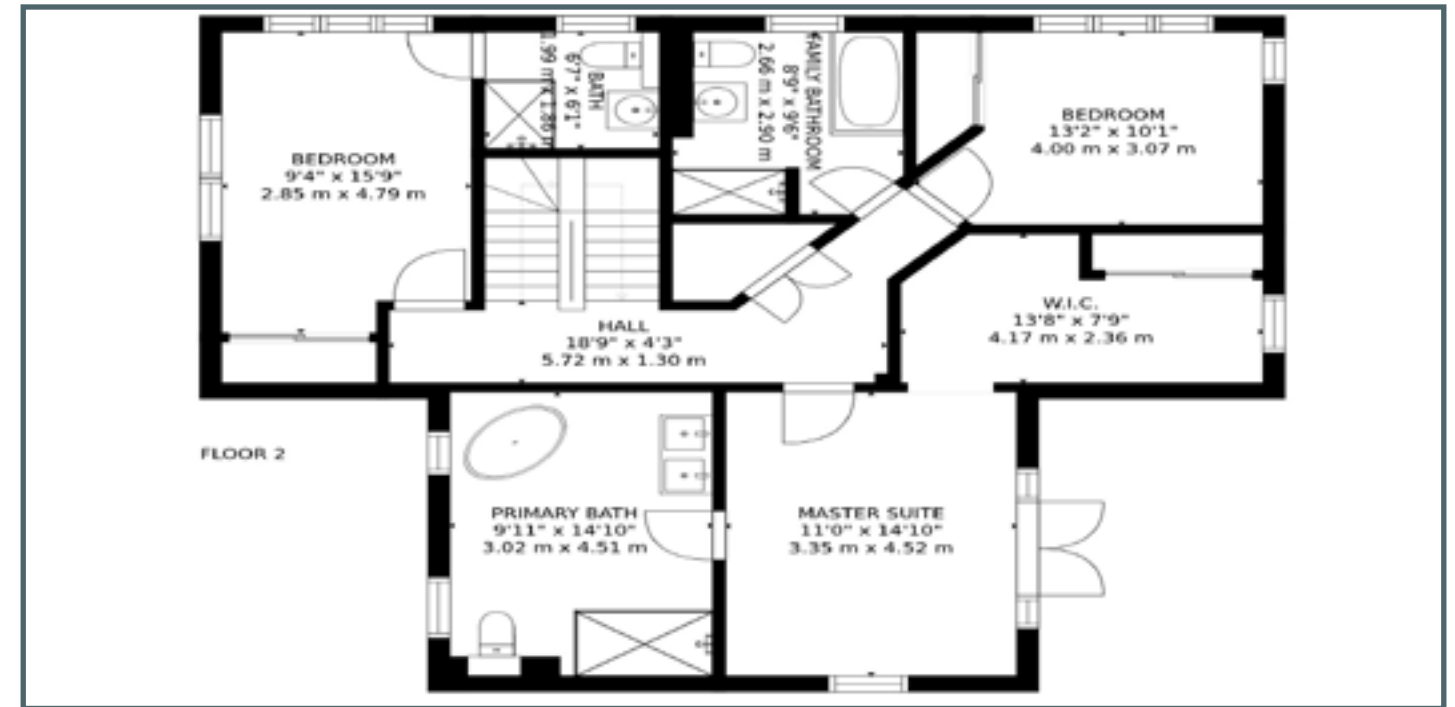
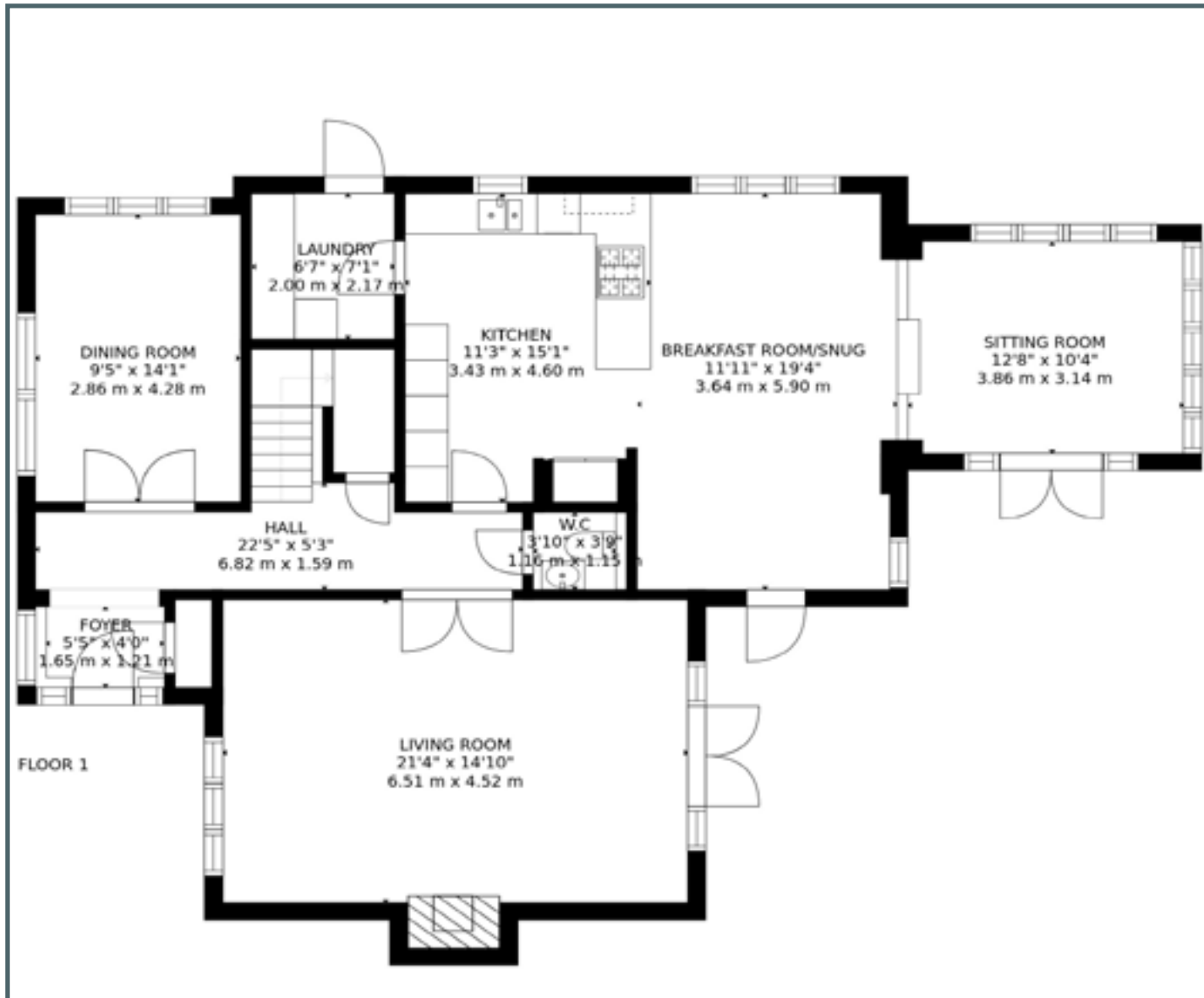


The current owners have created a breath taking master suite, unique by design, with a separate dressing room and large five piece en-suite bathroom hosting a Geberit Japanese toilet. Benefitting from manicured large wrap around gardens line with Eucalyptus trees. The unique double garage boasts living quarters above. The gardens enjoy a carefully positioned terrace to make the most of the evening sun.

Comprising of a bright and spacious entrance hallway complete with manor style tall walnut doors, The double door entrance leads into the lounge with French Rational doors opening out onto the large landscaped gardens, separate dining room, contemporary open plan dining kitchen and seating area leading to the impressive family room with stunning vaulted ceilings and floor to ceilings windows overlooking the garden. The SieMatic kitchen is complete with granite countertops and integrated appliances; the ground floor supplies the perfect space for entertaining friends and family. Also situated on this floor is a utility room, wc and cloakroom.

To the first floor you will find the vaulted gallery landing leading to the stunning master suite with newly fitted master en-suite, hosting a Geberit Japanese toilet, unique by design with a separate dressing room. This gorgeous room leads straight out onto balcony overlooking the garden. The further two bedrooms have double fitted wardrobes and the second bedroom benefits from an en-suite shower room in addition there is a large family bathroom. The second floor is home to a further two double bedrooms and store room with potential for creating a second suite.





**MAISON HAUS
SALES**

Maison Haus Guarantees to work harder to achieve the best price for you, we have pre-qualified buyers waiting.

Please accept this free invitation to a no obligation valuation, curious what your property is worth? Please call 01625 919 079

www.maison.haus

29 Freshwater Drive

Wychwood Park

CW2 5GR

Guide Price: £850,000

Tenure : Freehold

Local Authority : Cheshire East Council

EPC Rating : TBC



Important Notice :

Maison Haus Limited, their solicitors and any joint agents give notice that:

1. They are not authorised to make or give any representations or warranties in relation to the property either here or elsewhere, either on their own behalf or on behalf of their client or otherwise. They assume no responsibility for any statement that may be made in these particulars. These particulars do not form part of any offer or contract and must not be relied upon as statements or representation of fact.

2. Any areas, measurements or distances are approximate. The text, photographs and plans are for guidance only and are not necessarily comprehensive. It should not be assumed that the property has all necessary planning, building regulations or other consents and Maison Haus Limited have not tested any services, equipment or facilities. Purchasers must satisfy themselves by inspection or otherwise.