



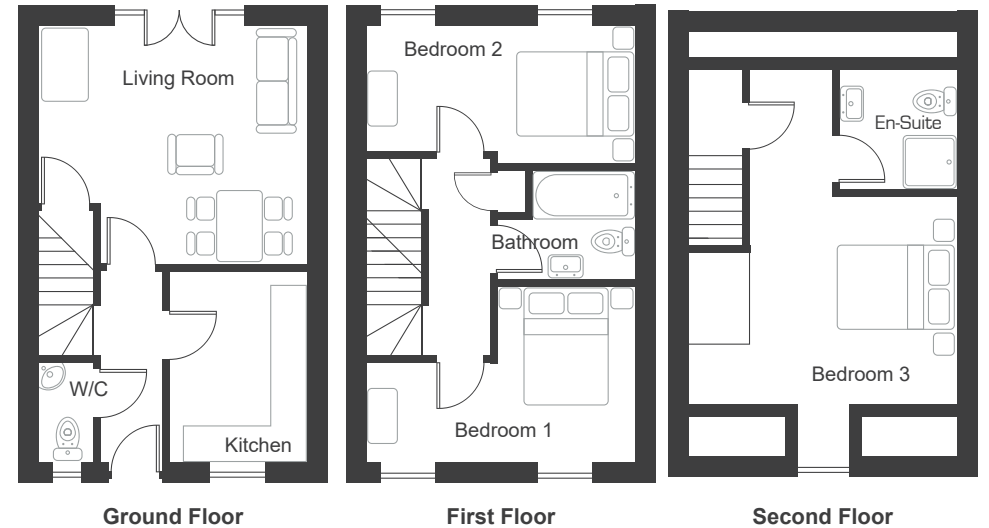
# THE MALTKIN



## 3 BEDROOM SEMI DETACHED HOME

- 2 Double Bedrooms & 1 Single Bedroom
- 1 Family Bathroom, 1 W/C & 1 Ensuite
- 1 Family Living Room / Dining Room
  - 1 Family Kitchen
  - On Street Parking

Set over 3 floors with fully fitted kitchen to the front, including integrated appliances. Separate lounge to the rear of the home with French doors opening onto the garden. Downstairs utility room. 1st floor has 2 double sized bedrooms & a bathroom. Master bedroom on 2nd floor with en suite.



## ROOM MEASUREMENTS

- LIVING ROOM** • 4422.5 X 3956.5MM • 14'5" X 13'0"
- KITCHEN** • 2268.5 X 3160.4MM • 7'4" X 10'3"
- W/C** • 888.5 X 1650.1MM • 2'9" X 5'4"
- BEDROOM 1** • 4422.5 X 2921.1MM • 14'5" X 9'6"
- BEDROOM 2** • 4422.5 X 2291.4MM • 14'5" X 7'5"
- BATHROOM** • 2268.5 X 1783.0MM • 7'4" X 5'8"
- BEDROOM 3** • 4422.5 X 6466.5MM • 14'5" X 21'1"
- EN-SUITE** • 1926.3 X 1959.9MM • 6'3" X 6'4"

\*Measurements provided in feet and inches are rounded to the nearest inch.

Measurements are based on the greatest possible distance and are for guidance only. They should not be used to indicate space for carpets, appliances or furniture. Kitchen/Bathroom layouts are subject to change. Measurements are for guideline purposes only and may be subject to minor variation. The floor plan above may or may not be to scale and is only a visual. Purchases must make their own inspections and carry out their own measurements and only rely upon such inspections and measurements. We stress that our plans give an indication only of approximate measurements and are not binding for contractual purposes.

# THE DANUM



## 3 BEDROOM SEMI DETACHED HOME

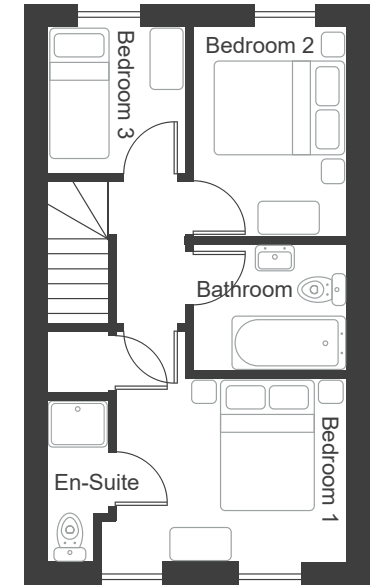
- 2 Double Bedrooms & 1 Single Bedroom
- 1 Family Bathroom, 1 W/C & 1 Ensuite
- 1 Family Living Room / Dining Room
  - 1 Family Kitchen
- On Street Parking

Offering a fully fitted kitchen to the front of the property, including integrated appliances. Spacious lounge to the rear of the home with French doors opening onto the garden. Downstairs utility room.

Upstairs features 2 double sized bedrooms and a single, with en suite to master bedroom.



Ground Floor



First Floor

## ROOM MEASUREMENTS

- LIVING ROOM** • 4422.5 X 4008.5MM • 14'5" X 13'1"
- KITCHEN** • 2268.5 X 3097.4MM • 7'4" X 10'1"
- W/C** • 888.5 X 2278.5MM • 2'9" X 7'5"
- BEDROOM 1** • 3611.0 X 2707.1MM • 11'8" X 8'9"
- EN-SUITE** • 888.5 X 1650.1MM • 2'9" X 5'4"
- BEDROOM 2** • 2268.5 X 3097.4MM • 7'4" X 10'1"
- BEDROOM 3** • 2036.0 X 2168.5MM • 6'6" X 7'1"
- BATHROOM** • 2268.5 X 1877.0MM • 7'4" X 6'2"

\*Measurements provided in feet and inches are rounded to the nearest inch.

Measurements are based on the greatest possible distance and are for guidance only. They should not be used to indicate space for carpets, appliances or furniture. Kitchen/Bathroom layouts are subject to change. Measurements are for guideline purposes only and may be subject to minor variation. The floor plan above may or may not be to scale and is only a visual. Purchases must make their own inspections and carry out their own measurements and only rely upon such inspections and measurements. We stress that our plans give an indication only of approximate measurements and are not binding for contractual purposes.

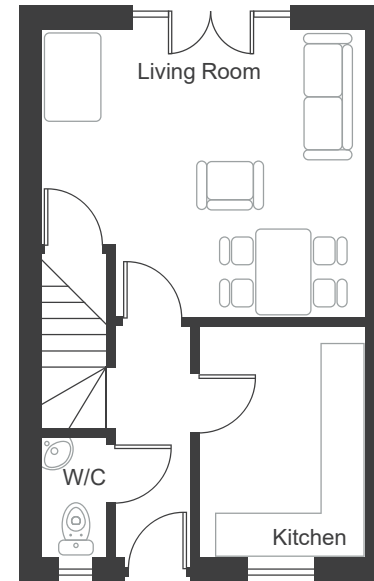
# THE GRANARY



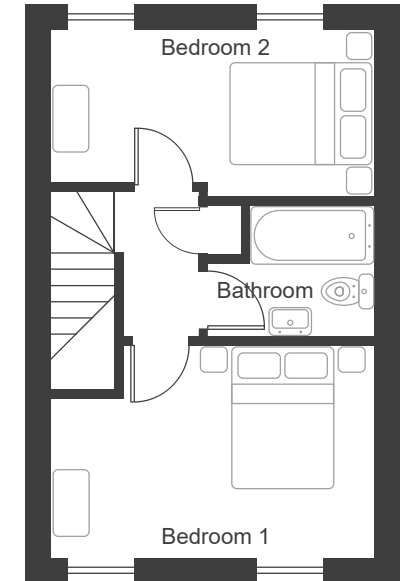
## 2 BEDROOM SEMI DETACHED HOME

- 2 Double Bedrooms & 1 Single Bedroom
- 1 Family Bathroom, 1 W/C & 1 Ensuite
- 1 Family Living Room / Dining Room
  - 1 Family Kitchen
  - On Street Parking

Perfect starter home, complete with fully fitted kitchen to the front of the property, including integrated appliances. Spacious lounge to the rear of the home with French doors opening onto the garden. Downstairs utility room. Upstairs features 2 double sized bedrooms and family bathroom.



Ground Floor



First Floor

## ROOM MEASUREMENTS

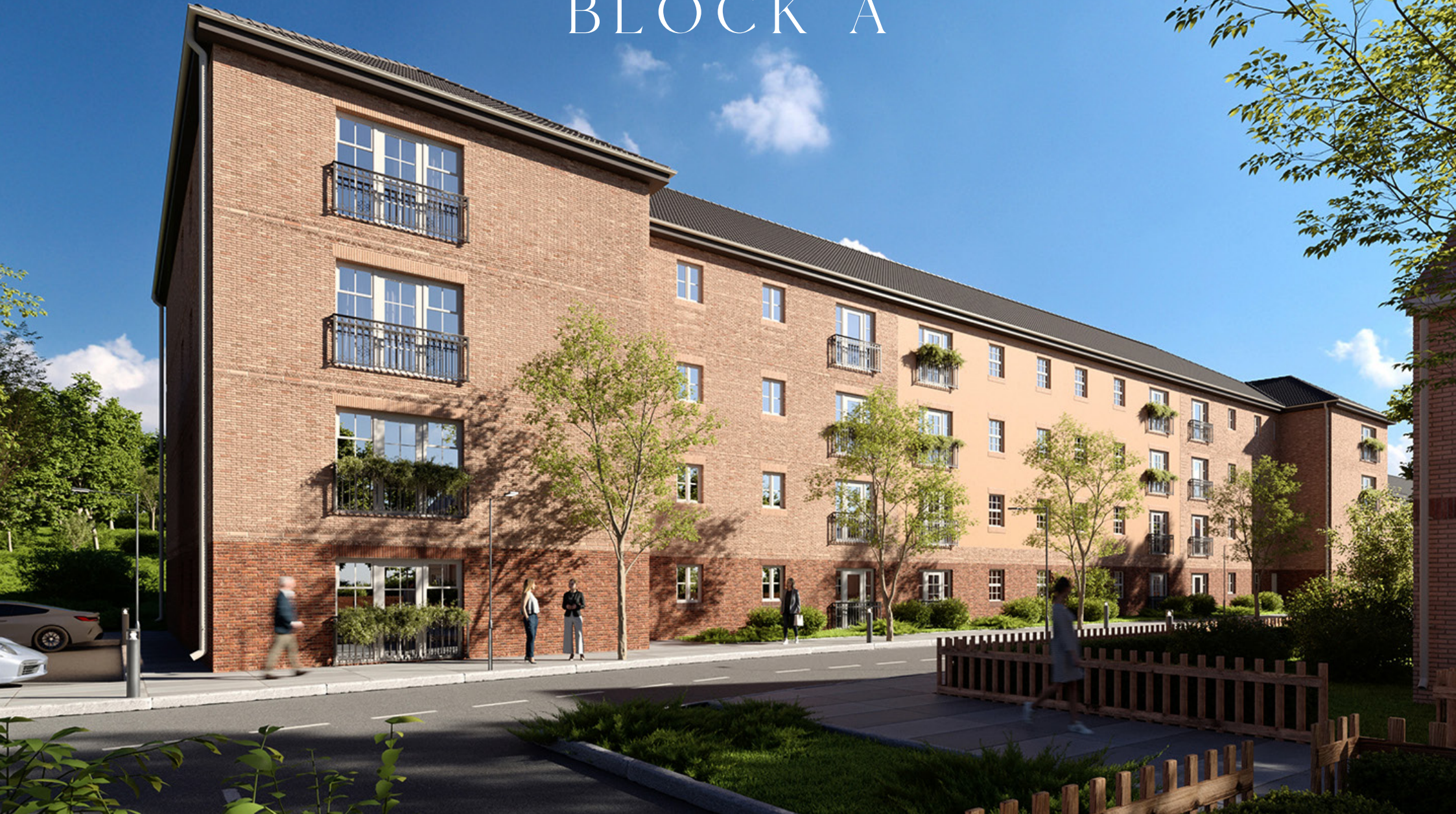
- LIVING ROOM** • 4422.5 X 3956.6MM • 14'5" X 13'0"
- KITCHEN** • 2257.0 X 3160.4MM • 7'4" X 10'3"
- W/C** • 888.5 X 1650.1MM • 2'9" X 5'4"
- BEDROOM 1** • 4422.5 X 2921.1MM • 14'5" X 9'5"
- BEDROOM 2** • 4422.5 X 3391.4MM • 14'5" X 11'1"
- BATHROOM** • 2268.5 X 1783.0MM • 7'4" X 5'8"

\*Measurements provided in feet and inches are rounded to the nearest inch.

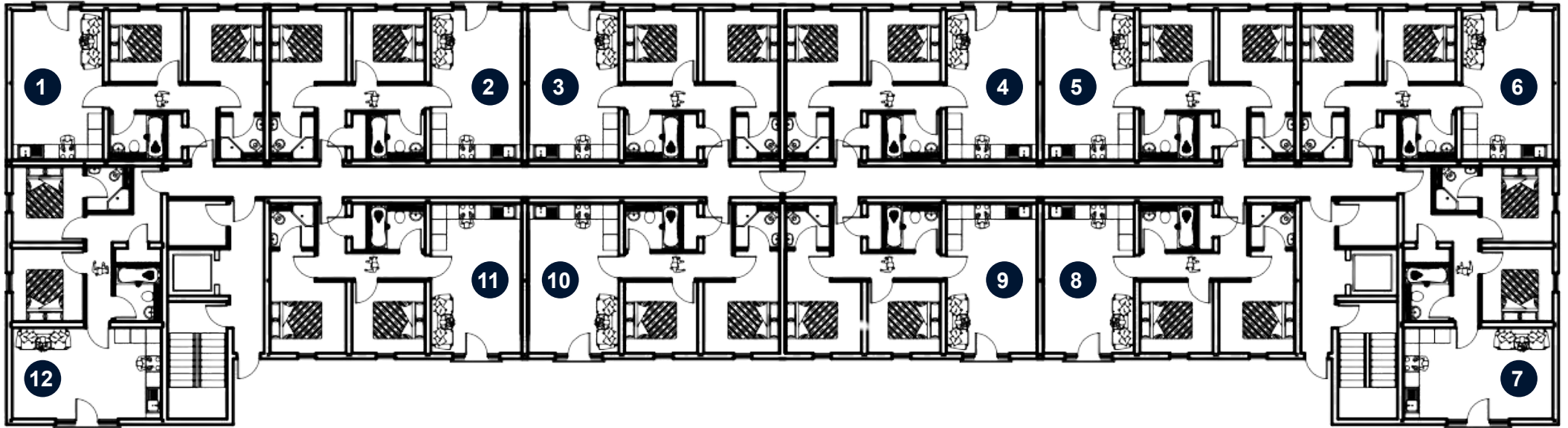
Measurements are based on the greatest possible distance and are for guidance only. They should not be used to indicate space for carpets, appliances or furniture. Kitchen/Bathroom layouts are subject to change. Measurements are for guideline purposes only and may be subject to minor variation. The floor plan above may or may not be to scale and is only a visual. Purchases must make their own inspections and carry out their own measurements and only rely upon such inspections and measurements. We stress that our plans give an indication only of approximate measurements and are not binding for contractual purposes.



# THE APARTMENTS BLOCK A



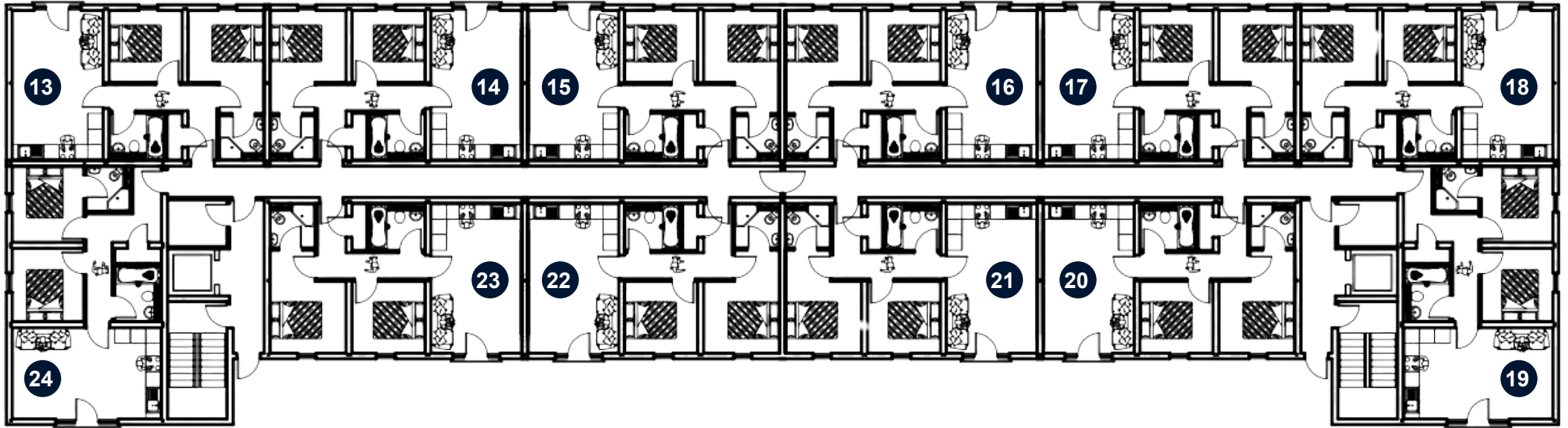
# GROUND FLOOR



48 two bedrooms apartments with ensuite bathrooms.



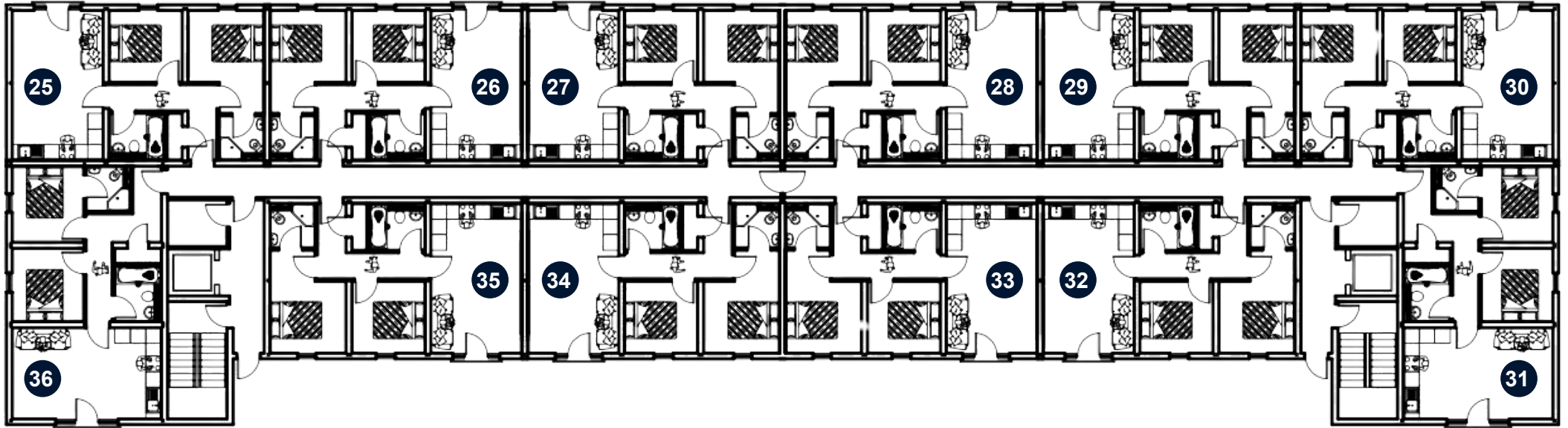
# FIRST FLOOR



48 two bedrooms apartments with ensuite bathrooms.



# SECOND FLOOR

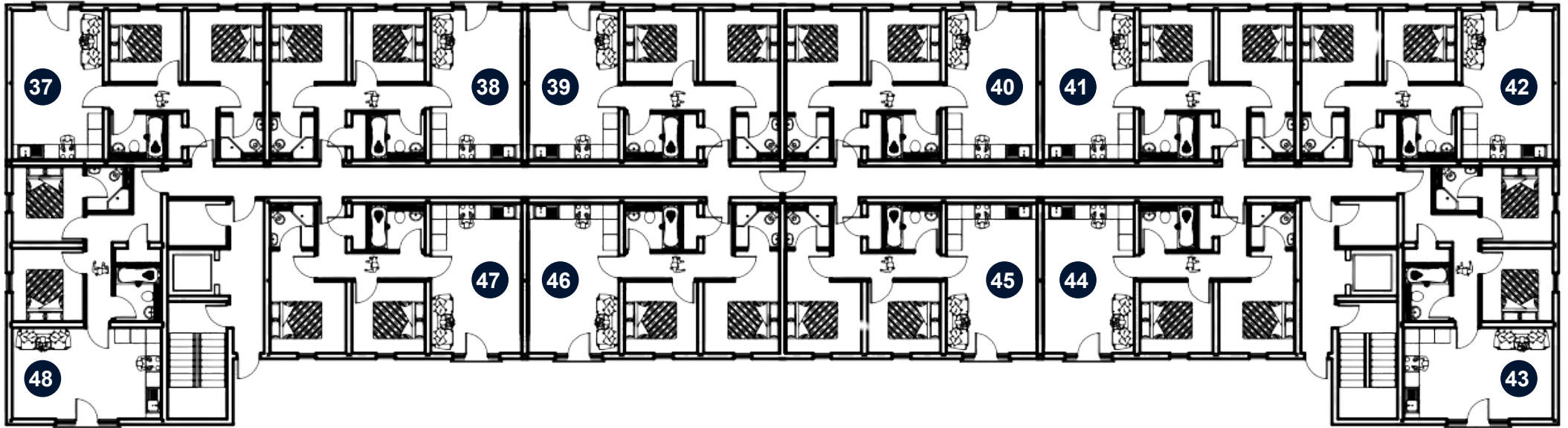


48 two bedrooms apartments with ensuite bathrooms.





# THIRD FLOOR



48 two bedrooms apartments with ensuite bathrooms.

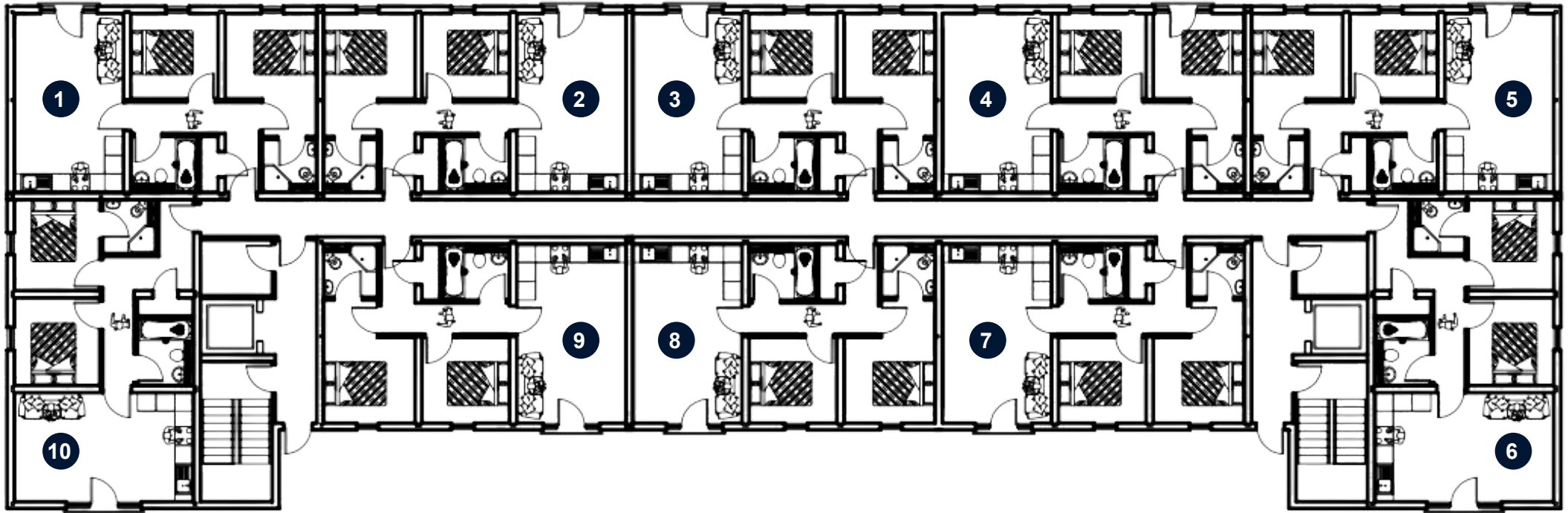




# THE APARTMENTS BLOCK B



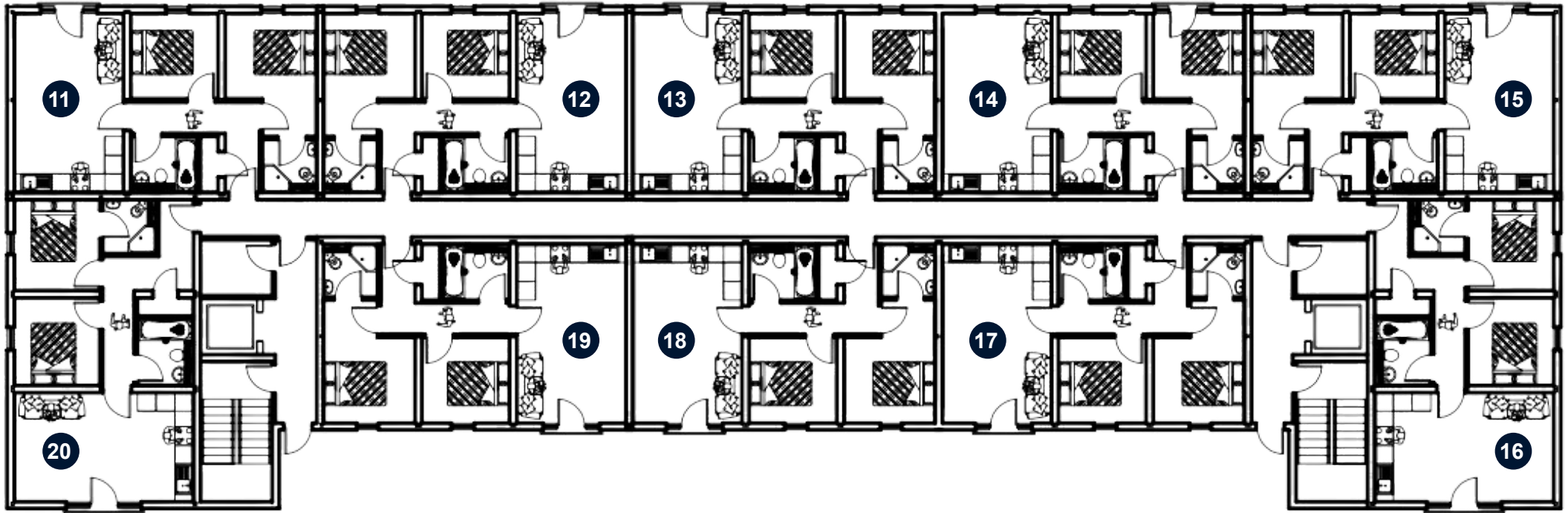
# GROUND FLOOR



30 two bedrooms apartments with ensuite bathrooms.



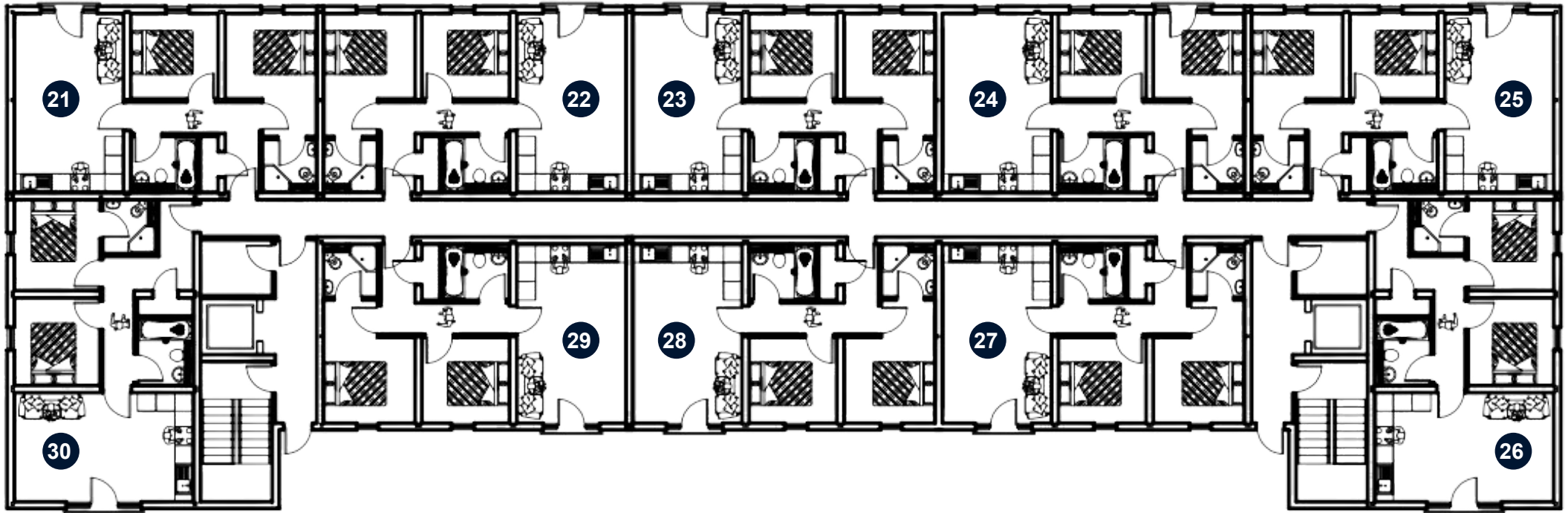
# FIRST FLOOR



30 two bedrooms apartments with ensuite bathrooms.



# SECOND FLOOR



30 two bedrooms apartments with ensuite bathrooms.





Vicinity  
DONCASTER