



## Altwood Close, Maidenhead

A detached family house of genuine quality with five bedrooms

Guide Price £1,325,000

Individual attention, expert advice, positive action

[www.robinsonstateagents.co.uk](http://www.robinsonstateagents.co.uk)

## Overview

- Spacious five bedroom detached house in sought-after location
- Three reception rooms
- Kitchen / breakfast room
- Potential for development (STPP)
- Beautiful gardens with outside office
- Master and guest bedrooms with en-suite facilities
- Downstairs cloakroom and Separate utility room
- EPC Rating - D
- Council Tax band G - £2656.56 for 2023/24
- Virtual viewing available

## Selling your home?

If you are considering selling your home please contact us today for your no obligation free market appraisal.

Our dedicated and friendly team will assist you 6 days a week. Get in touch today!

**01628 637600**

weaimtolisten@robinsonestateagents.co.uk



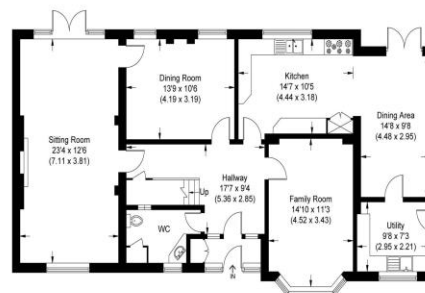
### Altwood Close

Approximate Gross Internal Area 214.14 sq m / 2304.98 sq ft  
(Excluding Outbuilding)

Outbuilding Area 10.69 sq m / 115.06 sq ft



Outbuilding  
Not in this location



Ground Floor



First Floor

Illustration for identification purposes only,  
measurements are approximate, not to scale.

## Directions

From Maidenhead town centre head west on the A4 Bath Road, turn left at the roundabout into Wotton Way, right into Haddon Road leading into Altwood Road. Travel along Altwood Road taking the second turning on your left into Altwood Close and follow the road to the right.

Whilst these details are thought to be correct, their accuracy cannot be guaranteed and do not form part of any contract. It should be noted that we have not tested any fixtures, fittings, equipment, apparatus or services, therefore we cannot verify that they are in working order or fit for purpose. Solicitors should be used to confirm that any moveable items described within these details are in fact part of the sale agreement. While we try to ensure measurements are correct they are not guaranteed and purchasers are advised to take their own measurements before ordering any fixtures or fittings.