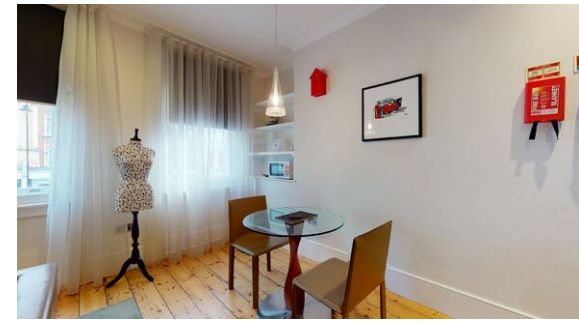




1 Bedroom 1 bath Apartment / Flat,
Brompton Road, Knightsbridge, London

<https://qinvestments.london>



1 Bedroom Serviced apartment with Terrace on Brompton Road, opposite Harrods, in Knightsbridge, London.

- **Virtual 3D Tour available**
- **Terrace**
- **First Floor**
- **Private terrace**
- **Housekeeping service and change of linen and towels once a week**
- **Complimentary Wi-Fi**
- **Fully fitted kitchen with washer/dryer and dishwasher**

Brompton Road, Knightsbridge, London

1 Bedroom Serviced apartment with Terrace on Brompton Road, opposite Harrods, in Knightsbridge, London.

Size: 444 square feet / 40 m2

*Virtual walk-through available

For more information please call or whatsapp T. +447985487333

Ref.CHBR1223

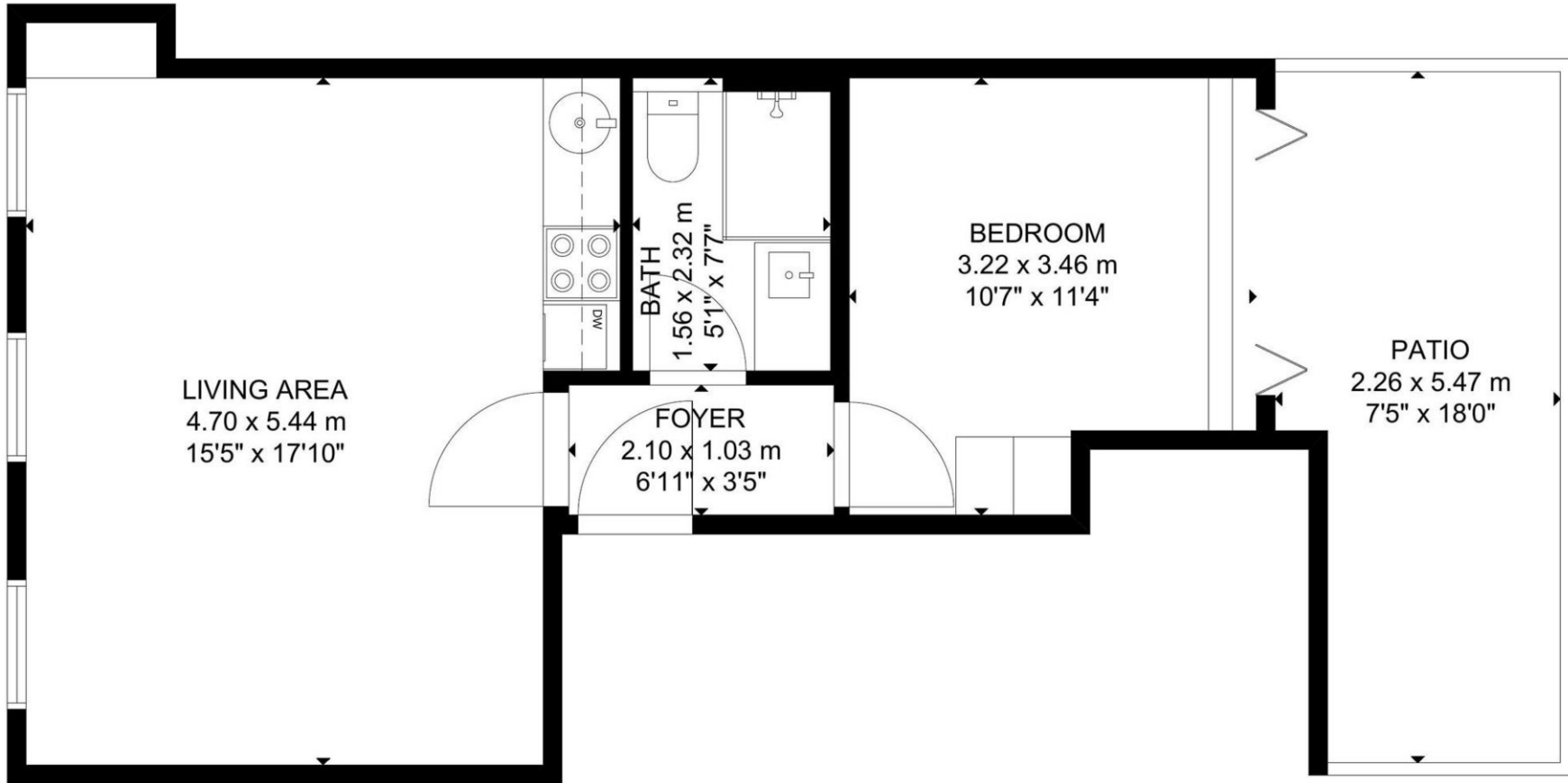
The main reception area welcomes plenty of natural light and boasts exquisite artwork, and vibrant colours and prints. The fully-fitted kitchen is equipped with modern everyday appliances, including a Nespresso coffee machine, dishwasher and fridge-freezer.

The master bedroom has plenty of storage space and an en-suite shower room with complimentary toiletries. You'll also have access to heating and air conditioning throughout, to help make your long-term stay as comfortable as possible.

With various eateries, boutique cafes and renowned stores at your doorstep, this one bedroom apartments in Knightsbridge makes home perfect for the long-term stay.

This apartment is located in Brompton Road building, which has a lift and only one apartment per floor. It is facing the main road, but it is really quiet as the windows are double glazed.

Life is made up of a few moments all strung together like pearls. Each moment is a pearl. We have a portfolio of high quality interior designed homes in London. Contact us today for the updated availability. T. +447985487333



LIVING AREA
4.70 x 5.44 m
15'5" x 17'10"

FOYER
2.10 x 1.03 m
6'11" x 3'5"

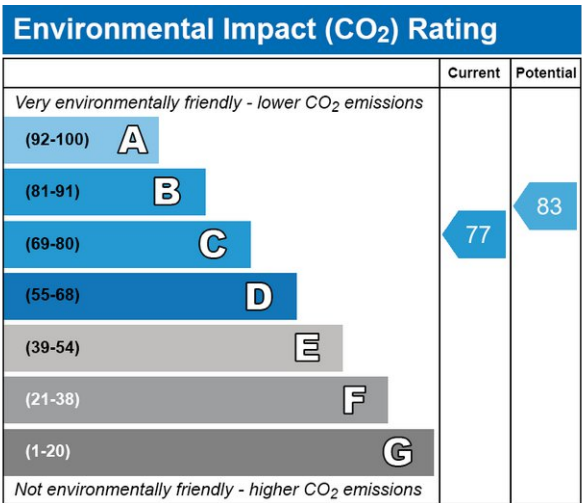
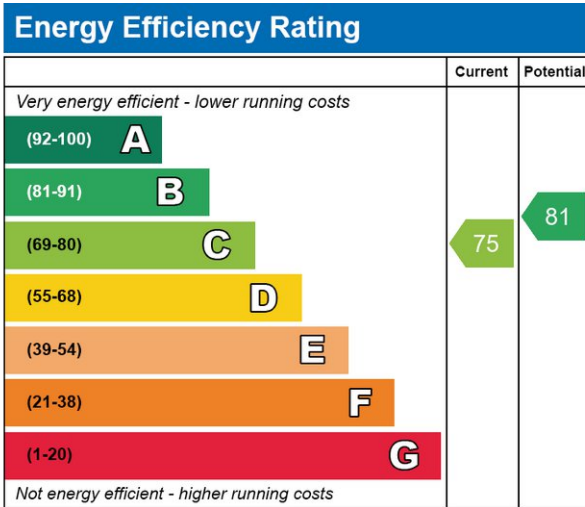
BATH
1.56 x 2.32 m
5'1" x 7'7"

BEDROOM
3.22 x 3.46 m
10'7" x 11'4"

PATIO
2.26 x 5.47 m
7'5" x 18'0"

FIRST FLOOR

GROSS INTERNAL AREA
TOTAL: 41 m²/444 sq ft
FIRST FLOOR: 41 m²/444 sq ft
EXCLUDED AREA: PATIO: 11 m²/121 sq ft
SIZE AND DIMENSIONS ARE APPROXIMATE, ACTUAL MAY VARY.



CONTACT US

Have a question for us? Please get in touch.

Q INVESTMENTS INTERNATIONAL LTD

T: +44 (0) 7985 487333

E: office@qinvestments.london

INVESTMENTS, REAL ESTATE & LIFESTYLE

Stay connected

Please visit our social media pages.

You can now find us on [Facebook](#), [Twitter](#), [Linkedin](#) and [Instagram](#) and many more!