



FEATURES

Beautifully Presented Semi Detached House

Spacious Extended Family Home

Four Bedrooms

Modern Kitchen/Dining Room

Two Bathrooms

Off-Street Parking for Two Cars

Rear Garden with Store/Workshop



SUMMARY

A beautifully presented **SEMI-DETACHED HOUSE** situated close to the amenities of Weston, Portland. This extended home offers **SPACIOUS FAMILY LIVING** with **FOUR BEDROOMS**, a generous lounge with dining area, **MODERN FITTED KITCHEN/DINING ROOM** and **TWO BATHROOMS**. Externally, there is a paved drive providing **OFF-STREET PARKING** for two cars and an enclosed rear garden.





ACCOMMODATION

Accommodation - Ground Floor

A composite front door opens to a useful entrance hall with stairs ascending to the first floor and a door to the lounge.

The well proportioned lounge enjoys lots of natural sunlight with a south facing bow window whilst the focal point of the room is a modern inset log burner with limestone surround and granite hearth. To the rear of the lounge is a dining area and a door to the kitchen/dining room.

The kitchen/dining room has a cosy dining area which leads to a well fitted modern kitchen with a good range of base and wall mounted cupboards and drawers with complementary worksurfaces, a one and a half bowl sink unit, plumbing for a washing machine and dishwasher and space for an American style fridge/freezer.

First Floor

On the first floor are two double bedrooms, a single bedroom with built-in storage and a family bathroom.

Second Floor

The second floor is home to the principal bedroom with a large dormer window to the rear and a roof window to the front offering a distant sea view. This room also benefits from an en-suite with shower, wash hand basin and W.C.

Outside

To the front is a block paved drive providing off-street parking for two cars. There is a wide access path to the rear garden which is enclosed by timber fencing and has lawned and paved patio areas and a substantial brick/block built shed/workshop

Entrance Hall

Lounge/Dining Room 24' 0" x 11' 6" maximum overall measurements (7.31m x 3.50m)

Lounge Area 13' 6" x 11' 6" (4.11m x 3.50m)

Dining Area 10' 6" x 8' 2" (3.20m x 2.49m)

Kitchen/Dining Room 20' 10" x 8' 0" maximum overall measurements (6.35m x 2.44m)

First Floor

Bedroom 2 10' 4" x 9' 3" (3.15m x 2.82m)

Bedroom 3 9' 8" x 9' 2" (2.94m x 2.79m)

Bedroom 4 10' 3" x 6' 6" (3.12m x 1.98m)

Bathroom 6' 6" x 5' 6" (1.98m x 1.68m)

Second Floor

Bedroom 1 19' 0" x 14' 3" max - sloping ceiling (5.79m x 4.34m)



Council Tax Band

The Valuation Office Agency published assessment is band 'B'

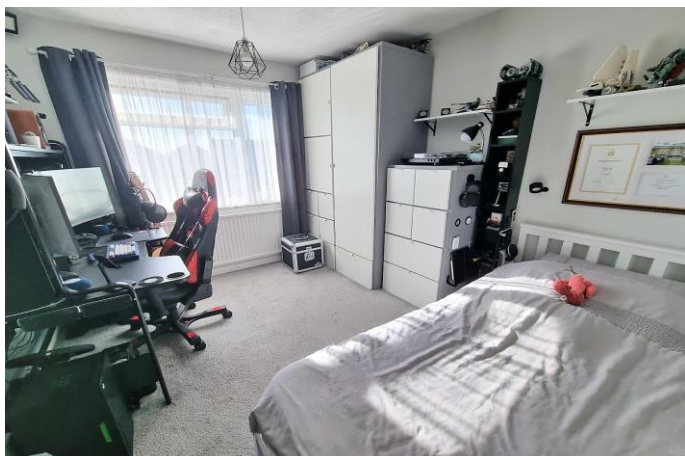
The Isle and Royal Manor of Portland

Portland provides a variety of shopping and business outlets as well as many leisure activities, in particular, the excellent fishing, sailing and water sports facilities. Portland and Weymouth hosted the sailing events of the 2012 Olympic Games from the Portland based National Sailing Academy and newly built marina, Osprey Quay.

Viewing & Further Information

Viewing is strictly by appointment through the sellers sole agents, The Real Estate Bureau. Telephone 01305 826 999. We are open Monday - Friday 9:00 - 17:30 and Saturday 9:00 - 16:30. www.therealestatebureau.co.uk

Notes:



FLOORPLAN



CROFT ROAD

Made with Metropix ©2023

Viewing & Further Information

Viewing is strictly by appointment through the seller's sole agents, The Real Estate Bureau.

Telephone 01305 826 999.

We are open:

Monday - Friday 9:00 - 17:30

Saturday 9:00 - 16:30.

www.therealestatebureau.co.uk

Energy Efficiency Rating

	Current	Potential
<i>Very energy efficient - lower running costs</i>		
(92-100) A		
(81-91) B		
(69-80) C		74
(55-68) D	62	
(39-54) E		
(21-38) F		
(1-20) G		
<i>Not energy efficient - higher running costs</i>		
England, Scotland & Wales		EU Directive 2002/91/EC

Important Notice

We have not carried out a structural survey and the services, appliances and specific fittings have not been tested. All photographs, measurements, floor plans and distances referred to are given as a guide only and should not be relied upon for the purchase of carpets or any other fixtures or fittings. The copyright of all details, photographs and floor plans remain exclusive to The Real Estate Bureau Ltd.

These particulars, whilst believed to be accurate are a general outline for guidance and do not constitute any part of an offer or contract. Intending purchasers should not rely on them as statements or representation of fact, but must satisfy themselves by inspection or otherwise as to their accuracy. No person in this firm's employment has the authority to make or give any representation or warranty in respect of the property.



3 Easton Street, Portland, DT5 1BS
Phone: 01305 826 999, Email: portland@therealestatebureau.co.uk

www.therealestatebureau.co.uk

