



Totteridge House, Totteridge Lane, High Wycombe, Bucks, HP13 7LR

Asking Price | £350,000

Property Features

- Stunning Split Level Apartment
- Originally Built in 1800's
- Listed as a Building of Interest
- 2 Double Bedrooms
- Spiral Staircase leading to Bedroom 2
- Kitchen/Breakfast Room with Aga style Oven.
- Manicured Gardens
- Allocated Parking
- Security Entry Phone System
- EPC E / Council Tax Band E

Full Description

This rare and unique apartment for sale in Totteridge House which is set in a stunning building and classed as a building of interest, originally built for the mayor of High Wycombe in the 1800's. The property has been skillfully converted into apartments in the 1990's, offering an exquisite blend of historical charm and modern amenities.

This apartment is arranged over the first and second floor and boasts two spacious double bedrooms with the second bedroom accessed via a beautiful spiral staircase from the living room. Kitchen/Breakfast Room with Aga style Oven. The property features a rejuvenating bathroom and benefits from gas radiator heating, double glazing and open fireplaces that add to the authentic feel of the home. The apartment has access to stunning, well-kept manicured gardens that offer you an ideal space for unwinding on a sunny day.

The property is sold with a share of freehold, and the remaining years of the 999 year lease adds to the security of your investment. The apartment is located in Totteridge, an idyllic location with beautiful walks across Totteridge Common. The common, which is just a stone's throw away, is a great space to stretch your legs, walk your four-legged friends and relax while enjoying the rustic ambiance of local nature.

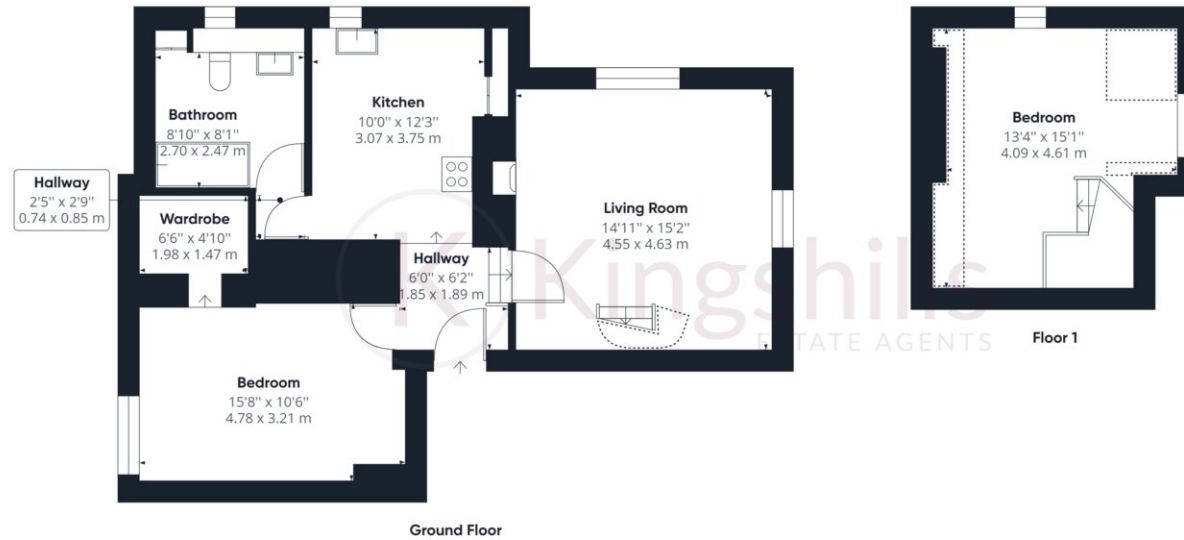
Transport links to High Wycombe and London are amazing from this apartment, with High Wycombe train stations just a few minutes drive from the apartment. High Wycombe town center is also close by, and you can access all the amenities you need within just a short commute.

High Wycombe is the perfect location if you are looking for a home that strikes a balance between modern-day amenities and historic charm. The beautiful and historic West Wycombe Park and National Trust village offer you an ideal backdrop for a relaxed afternoon walk. The modern Eden Shopping Center offers a surreal venue for some retail therapy, with an array of brand names and stores on offer to meet your shopping requirements.

In conclusion, this beautiful Apartment for sale in Totteridge House offers you a unique opportunity to own a piece of history. With the unique mix of modern amenities with charming, historic architecture, this property is truly a must-see for anyone looking for a home that is unique and represents the past, present, and future. We highly recommend a viewing!







Approximate total area⁽¹⁾

850.08 ft²
78.98 m²

Reduced headroom

55.06 ft²
5.12 m²

(1) Excluding balconies and terraces

 Reduced headroom
(below 1.5m/4.92ft)

While every attempt has been made to ensure accuracy, all measurements are approximate, not to scale. This floor plan is for illustrative purposes only.

GIRAFFE360