



37 White Close, Downley, High Wycombe, Buckinghamshire, HP13 5NG

Asking Price | £475,000

## Property Features

---

- Detached Family Home
- Three Bedrooms
- Generous Plot
- Sought After Downley Location
- Panoramic Views
- Two Reception Rooms
- Kitchen with Larder
- Garage & Driveway
- South Facing Rear Garden
- EPC 65 D / Council Tax Band E

## Full Description

---

Located in the desirable area of Downley in High Wycombe, this detached house presents an exciting opportunity for those looking to create their dream home. With three bedrooms, two reception rooms, and one bathroom, this property offers ample space for a growing family. While in need of modernisation, the house provides a canvas for personalisation whilst enjoying its prime location with stunning panoramic views and a south-facing garden.

The property boasts a spacious entrance hallway leading to two reception rooms, providing versatile spaces for family gatherings or entertaining guests. Large windows allow natural light to flood the rooms, enhancing the overall ambiance. The kitchen offers lots of potential to create your perfect culinary space.

The house comprises of three bedrooms, each with its own unique charm. The potential for customisation allows future owners to tailor these spaces to their specific needs and preferences. The rear bedrooms offers fantastic panoramic views. The single bathroom provides essential facilities and serves as a starting point for a potential modernisation project.

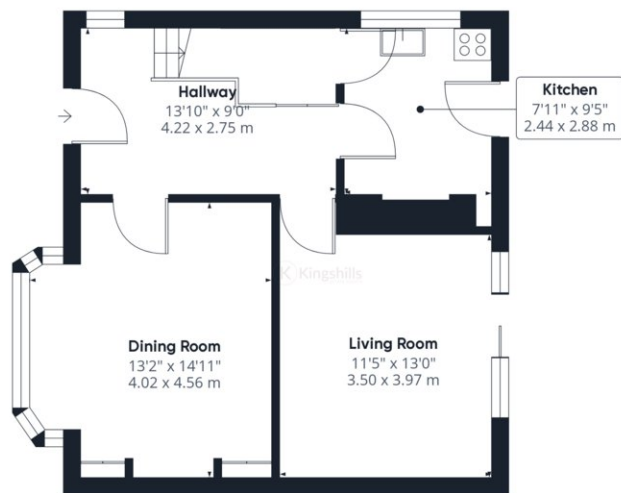
One of the standout features of this property is its breathtaking panoramic views. From various vantage points, residents can enjoy vistas that encompass the surrounding countryside, creating a sense of tranquillity and connection with nature. The south-facing garden presents an ideal outdoor retreat. With ample space for gardening, relaxation, and outdoor activities, this aspect adds a valuable extension to the living space.

While the property requires some modernisation, this presents a unique opportunity for buyers to express their personal style on the home. The potential for renovations ensures that the property can be transformed into a contemporary haven tailored to the needs of the new owners.

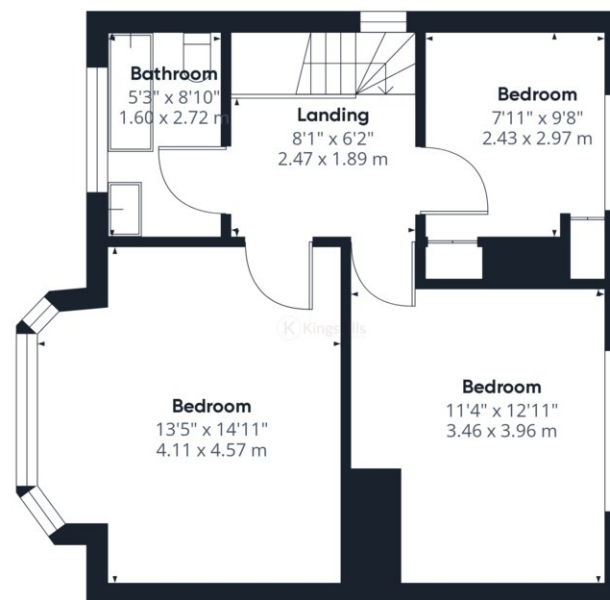
This detached house in Downley not only offers fantastic panoramic views and a south-facing garden but also provides an exciting prospect for those looking to make a dream home in the picturesque High Wycombe. Don't miss the opportunity to embrace the best of Buckinghamshire living.







Ground Floor



Floor 1

Approximate total area<sup>①</sup>

1092.24 ft<sup>2</sup>

101.47 m<sup>2</sup>

Excluding balconies and terraces

While every attempt has been made to ensure accuracy, all measurements are approximate, not to scale. This floor plan is for illustrative purposes only.

GIRAFFE360