



30 EDGEHILL ROAD

Aberystwyth | Ceredigion | SY23 1LZ

FINE & COUNTRY

30 EDGEHILL ROAD

---

# 30 EDGEHILL ROAD

A superb opportunity to acquire a four bedroom end terraced house in one of the most popular streets close to Aberystwyth town centre. This well maintained and refurbished property offers a good size entrance hall, large sitting room / dining room and a good sized kitchen / breakfast room. All with excellent views and elevated views across Aberystwyth.

To the first floor there are three bedrooms, a refitted bathroom and separate cloakroom. To the second floor, is a large master bedroom with twin Velux windows and extensive built in wardrobes.

The property also benefits from a good sized garden with great views and useful storage sheds.

Viewing highly recommended to appreciate the size and quality on offer.

Video Link: <https://youtu.be/5-wkEndjc4o>



Energy Efficiency Rating		Current	Potential
<i>Very energy efficient - lower running costs</i>			
(92 plus) <b>A</b>			
(81-91) <b>B</b>			86
(69-80) <b>C</b>			
(55-68) <b>D</b>		58	
(39-54) <b>E</b>			
(21-38) <b>F</b>			
(1-20) <b>G</b>			
<i>Not energy efficient - higher running costs</i>			



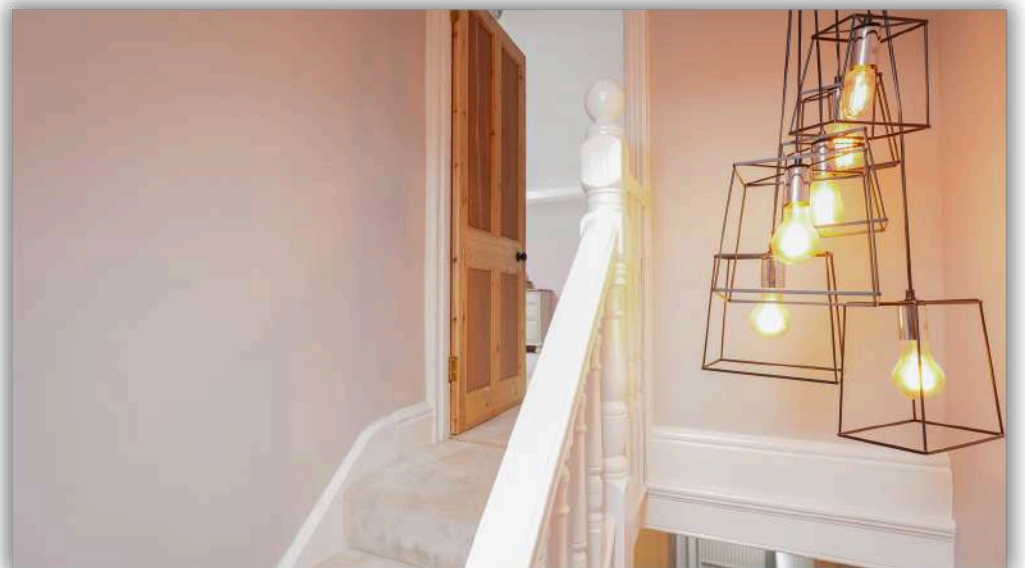
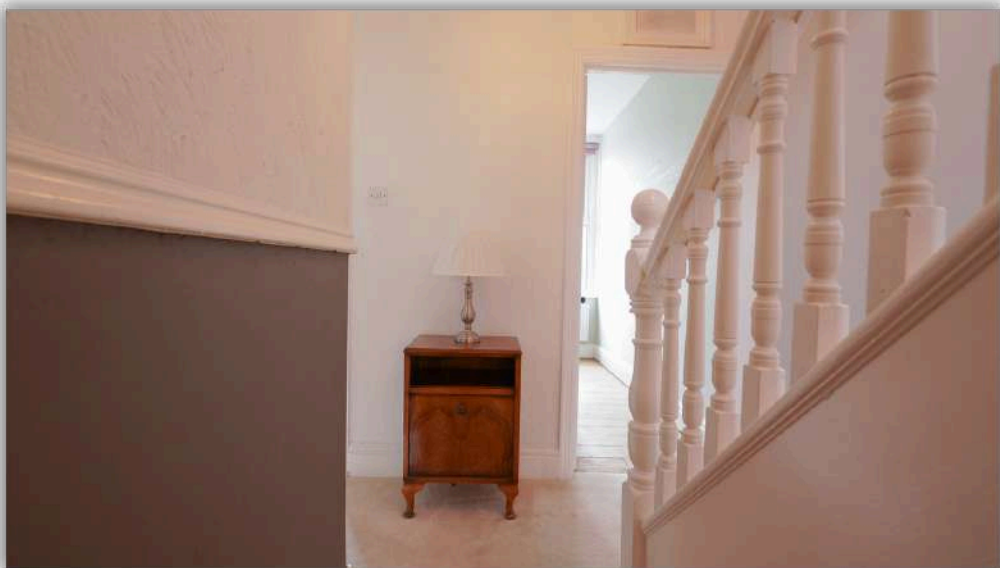
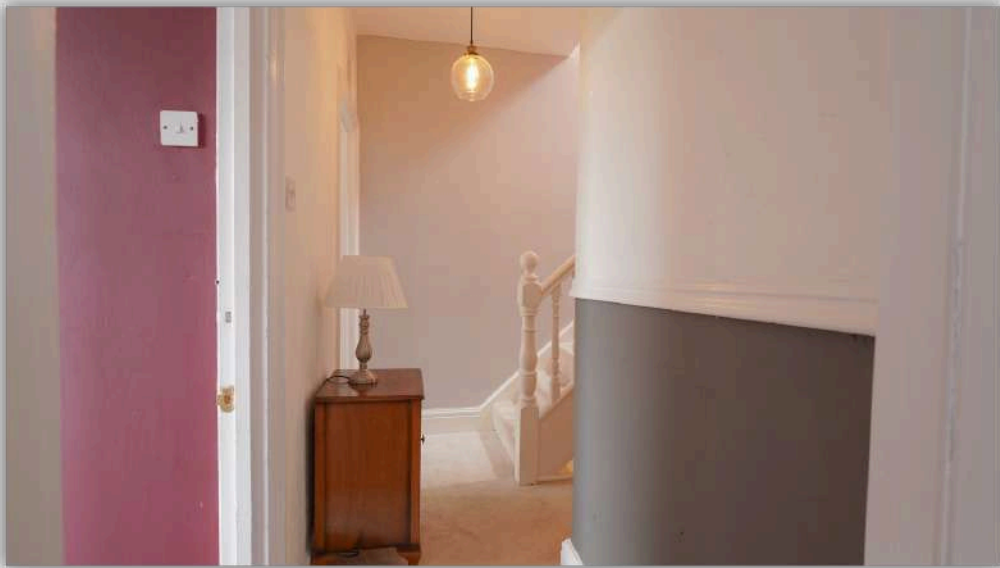


















Fine & Country West Wales

The Gallery, Station Approach, Station Building, Aberystwyth, SY23 1LH

Tel: 01974 299 055 | [nigel.salmon@fineandcountry.com](mailto:nigel.salmon@fineandcountry.com)

**FINE** & **COUNTRY**