



## Westborough Road, Maidenhead

Two Bedroom terraced house

Offers in Excess of £365,000

Individual attention, expert advice, positive action

[www.robsonstateagents.co.uk](http://www.robsonstateagents.co.uk)



## Overview

- Two-double bedroom Victorian house
- Courtyard garden
- Walking distance to Maidenhead train station and town centre
- Close to local amenities
- Perfect for a first-time buyer or investor
- EPC rating - D
- Council tax band - D (currently £1593.94 for 2023/24)
- Virtual viewing available

## Selling your home?

If you are considering selling your home please contact us today for your no obligation free market appraisal.

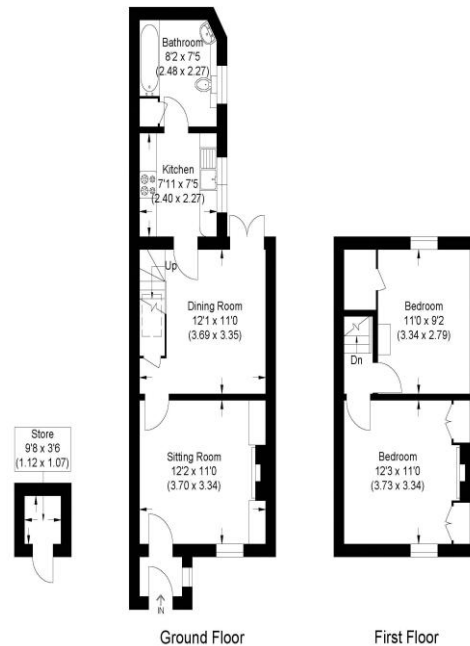
Our dedicated and friendly team will assist you 6 days a week. Get in touch today!

**01628 637600**

[weaimtolisten@robinsonstateagents.co.uk](mailto:weaimtolisten@robinsonstateagents.co.uk)



**Westborough Road**  
 Approximate Gross Internal Area 64.17 sq m / 690.72 sq ft  
 (Excluding Store)  
 Store Area 1.20 sq m / 12.91 sq ft  
 Total Area 65.37 sq m / 703.63 sq ft (Including Store)



Ground Floor First Floor

Illustration for identification purposes only, measurements are approximate, not to scale.

## Directions

From Maidenhead town centre head west along the A4 (Bath Road) towards Reading for about 1 mile. Just before the mini-roundabout turn left into Westborough Road and the property can be found on the left hand side.

Energy Efficiency Rating			
Score	Energy rating	Current	Potential
92+	A		
81-91	B		87   B
69-80	C		
55-68	D	59   D	
39-54	E		
21-38	F		
1-20	G		

Whilst these details are thought to be correct, their accuracy cannot be guaranteed and do not form part of any contract. It should be noted that we have not tested any fixtures, fittings, equipment, apparatus or services, therefore we cannot verify that they are in working order or fit for purpose. Solicitors should be used to confirm that any moveable items described within these details are in fact part of the sale agreement. While we try to ensure measurements are correct they are not guaranteed and purchasers are advised to take their own measurements before ordering any fixtures or fittings.