



Flat 2, 148 London Road, High Wycombe, Buckinghamshire, HP11 1DQ

Asking Price | £1,700

Property Features

- Luxury Apartment
- Two Bedrooms
- Stunning Bathroom
- Allocated Parking
- Washer Dryer and Dishwasher Included
- Gas Heating
- High Specification Throughout
- Within Walking Distance to High Wycombe Town Centre
- Split Over Two Floors
- Available 1st July 2024

Full Description

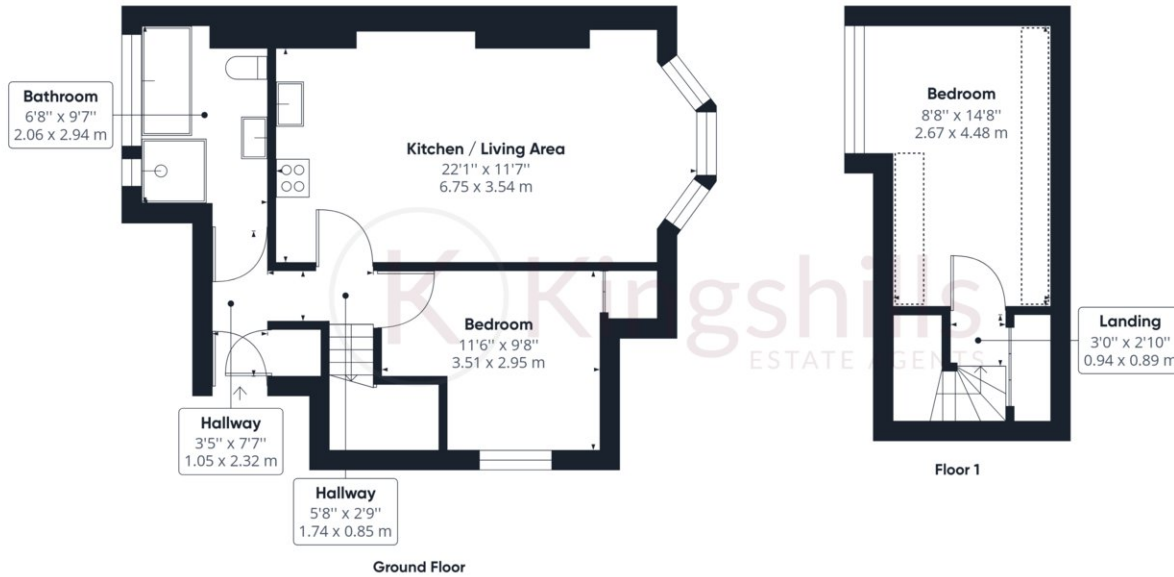
We are delighted to bring to the market this exquisite, high-specification apartment which is within walking distance of High Wycombe town centre. This apartment offers the pinnacle of modern living within the heart of High Wycombe. Boasting a prime location just a leisurely stroll away from the vibrant town centre, this residence presents a unique opportunity to embrace a lifestyle of convenience and luxury.

This two-bedroom apartment offers a spacious and open plan kitchen/living/dining area. The kitchen provides an integrated washer dryer, dishwasher, oven, gas hob and fridge freezer. The 2nd bedroom is a double room and has a storage cupboard. On the entrance floor you will also find the stunning bathroom with shower cubicle and standalone bath. On the top floor you will find a good size double bedroom. Externally you will find communal outside space and parking for one-car to the rear, which has CCTV in operation 24 hours a day.

High Wycombe Town centre offers a abundance of shopping, dining, and entertainment options just a short walk away, creating an ideal setting for a vibrant urban lifestyle. The train connects High Wycombe to London Marylebone in just 24 minutes.







Approximate total area⁽¹⁾

672.66 ft²
62.49 m²

Reduced headroom

33.82 ft²
3.14 m²

(1) Excluding balconies and terraces

 Reduced headroom
(below 1.5m/4.92ft)

While every attempt has been made to ensure accuracy, all measurements are approximate, not to scale. This floor plan is for illustrative purposes only.

GIRAFFE360