



Brackley Road, Hazlemere, High Wycombe, Buckinghamshire, HP15 7EY

Asking Price | £385,000



## Property Features

---

- Modern Mid Terraced Home
- Fronting a Small Green
- Well Maintained Throughout
- Good School Catchment
- Living Room with Fireplace
- Kitchen/Breakfast Room
- 2 Double Bedrooms
- Family Bathroom
- Enclosed Gardens and Garage
- EPC 72 C / Council Tax Band D

## Full Description

---

A lovely 2 bedroom home fronting on to a small green and located on the Holmer Green Side Of Hazlemere. Within the catchment of the highly regarded local schools, this well maintained home is ready to move in to. Brackley Road has great links to London and the North with train stations at both High Wycombe (Chiltern Line - 25 Mins to Marylebone) and Amersham (Metropolitan Line).

### Accommodation

Entrance hall, living room with fireplace and views over the green. Modern fitted kitchen/breakfast room with fitted appliances, built in seating area and a door leading to the enclosed rear garden. To the first floor there are two generously sized bedrooms and a modern bathroom.

### Outside

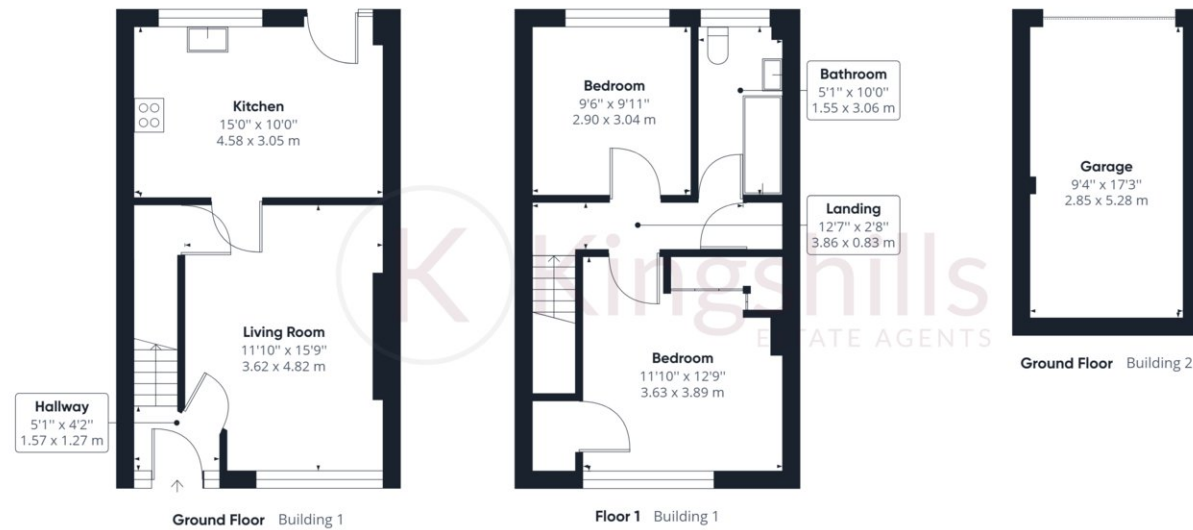
To the rear there is a low maintenance garden with large shed. There is a gate leading to both the informal parking area and the garage that has parking to the front.











Approximate total area<sup>(1)</sup>

901.66 ft<sup>2</sup>  
83.77 m<sup>2</sup>

(1) Excluding balconies and terraces

While every attempt has been made to ensure accuracy, all measurements are approximate, not to scale. This floor plan is for illustrative purposes only.

GIRAFFE360