



1 The Warren, Jackson Court, Hazlemere, High Wycombe, HP15 7EB

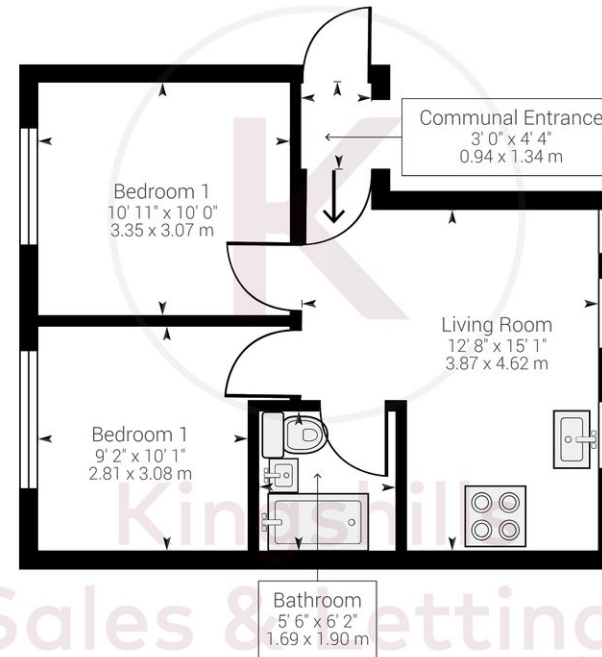
Asking Price | £1,200

Property Description

An immaculate ground floor apartment located on the popular Manor Farm Development. Built in 2018 by a local developer the property is ideally located not far from local amenities including shops, doctors and local schools. The accommodation comprises; entrance via a security entry phone system, open plan living/kitchen with the kitchen area having modern units and integrated appliances including fridge/freezer, oven and hob, 2 good sized bedrooms and lovely fitted bathroom. The property also benefits from double glazing and 1 parking space. Available Now.

COUNCIL TAX C

EPC RATING C



Approximate net internal area: 422.85 ft² / 39.28 m²
While every attempt has been made to ensure accuracy, all measurements are approximate, not to scale. This floor plan is for illustrative purpose only and should be used as such by any prospective tenant or purchaser.

Powered by Giraffe360

Kingshills Estate Agents
Comet Studios
Amersham
Buckinghamshire
HP7 0PX

01494 939868
hello@kingshills.co.uk
kingshills.co.uk

Agents Note: Whilst every care has been taken to prepare these particulars, they are for guidance purposes only. All measurements are for general guidance purposes only and whilst every care has been taken to ensure accuracy, they should not be relied upon and potential buyers/tenants are advised to recheck the measurements