







## About the property

Do You Want A Two Bedroom, Single Storey Doer-Upper Or The Chance To Build A Three Storey, Six Bedroom Luxury Home? Those are your options, with planning permission in place for this bungalow on a substantial Olde Ealing plot.

As it's called "The Bungalow" you'd be right to assume it's the only single storey property on this quiet residential street. It's pretty unique, as you'd expect to find mostly Edwardian semis or Victorian terraces in this popular part of Olde Ealing.

And if you're looking for a single storey home to do up and make your own, the good news is that the decoration is neutral and unfussy.

Unlike many traditional bungalows, you won't have to spend hours chipping off Anaglypta wallpaper or stripping wood panels from the walls. It's the sort of property where you could move in and then tackle it on a room by room basis.

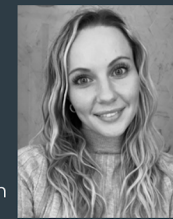
## Key features

- Detached Bungalow
- Superb Location
- Off street parking
- Planning permission for 6 bedroom detached house
- Planning Ref. No: 215684FUL
- Double fronted
- Quiet residential street
- Great for local schools
- Perfectly placed for the parks
- Development opportunity
- Potential for alternative plans
- 0.4 mile to South Ealing Station (Piccadilly line)
- 0.8 mile to Ealing Broadway Station (Central, District and Elizabeth line)



**PAUL LESLIE**

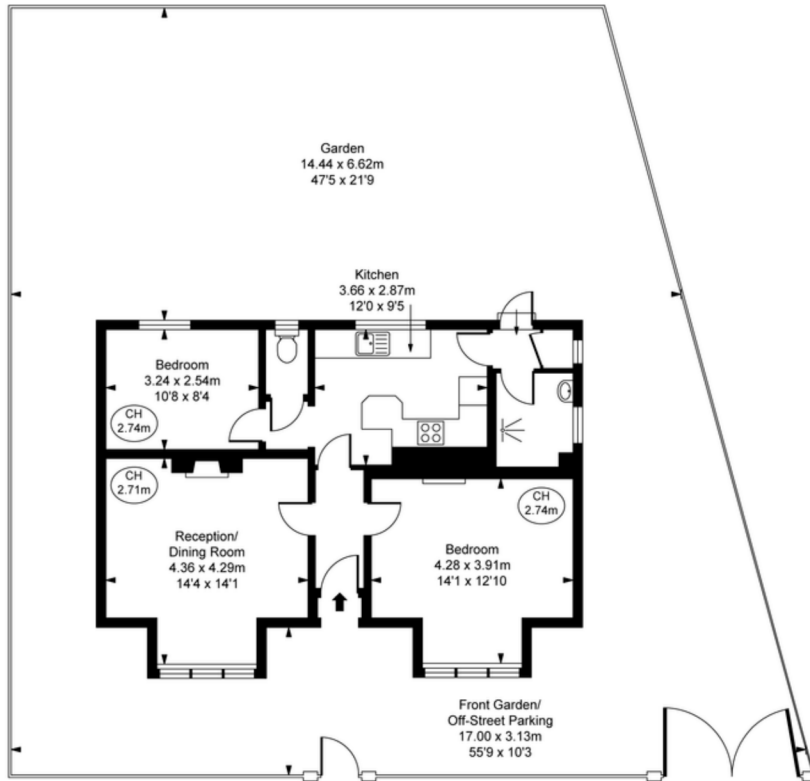
Director  
020 3488 6445  
07738 401 822  
paul@leslieandcompanyuk.com



**RACHEL WATTS**

Director  
020 3488 6445  
07527 594 528  
rachel@leslieandcompanyuk.com

The Bungalow,  
Blandford Road, W5  
Approximate Gross Internal Area  
63.81 sq m / 687 sq ft  
(CH = Ceiling Heights)



This plan is not to scale. It is for guidance and not for valuation purposes. All measurements and areas are approximate only, and have been prepared in accordance with the current edition of the RICS Code of Measuring Practice. © Future Performance



**Energy Efficiency Rating**

	Current	Potential
Very energy efficient - lower running costs		
(92-100) <b>A</b>		
(81-91) <b>B</b>		
(69-80) <b>C</b>		76
(55-68) <b>D</b>		
(39-54) <b>E</b>	50	
(21-38) <b>F</b>		
(1-20) <b>G</b>		
Not energy efficient - higher running costs		