



Friars Gardens, Hughenden Valley, High Wycombe, Buckinghamshire, HP14 4LU

Asking Price | £750,000

Property Features

- Beautifully Extended Family Home
- Far Reaching Views from the Bedrooms
- Stunning Kitchen/Breakfast/Dining Room
- Living Room with Fireplace
- Family Room/Home Office
- 4 Bedrooms
- 2 Bathrooms (ensuite to Main Bedroom)
- Stunning Rear Gardens
- Driveway Parking
- EPC 69C / Council Tax Band F

Full Description

Located within the picturesque village of Hughenden Valley, this immaculate 4 bedroom detached home has been thoughtfully extended to offer free flowing family accommodation. From its vantage point, it commands stunning views across the undulating terrain of the Chiltern Hills, a constant reminder of nature's beauty.

Upon entering, a welcoming hallway provides seamless access to all rooms. The inviting living room enjoys a wood-burning fireplace which exudes warmth and charm. The family room with fitted cupboards, cleverly transformed from the garage, presents a flexible space ideal for children or a home office.

The heart of the home lies to the rear with an open-plan kitchen/breakfast/dining area, offering not only views of the verdant rear garden but is also a welcoming area for entertaining. Fitted with high-grade wood flooring and fully fitted appliances, the kitchen exudes both functionality and style. Completing the ground floor, a utility room with spaces for washing machine and tumble dryer and cloakroom offer practical convenience

Ascending to the first floor, the principal bedroom awaits, adorned with fitted wardrobes and boasting a newly replaced ensuite for added luxury. Three additional bedrooms share access to a family bathroom and a night cloakroom, ensuring ample space and comfort for all occupants and three bedrooms enjoying panoramic views of the Chiltern Hills.

Outside, the rear garden serves as a serene retreat, featuring two main seating areas that invite al fresco relaxation and entertaining. A charming wood bench seating area, nestled just off the kitchen, provides the perfect spot for morning coffee. Meanwhile, ample parking at the front ensures convenience for residents and visitors alike.

Location

Embark on a journey through the enchanting landscape of the Chiltern Hills, where a plethora of scenic trails awaits exploration. From leisurely strolls along the gentle slopes to invigorating hikes through ancient woodlands, there is a route to suit every inclination. Discover hidden gems such as the Hellfire Caves or ascend to lofty heights for breathtaking panoramas across the valley below. Whether seeking solitude or companionship, the Chiltern Hills offer an immersive outdoor experience for all ages and abilities.

Local Schooling:

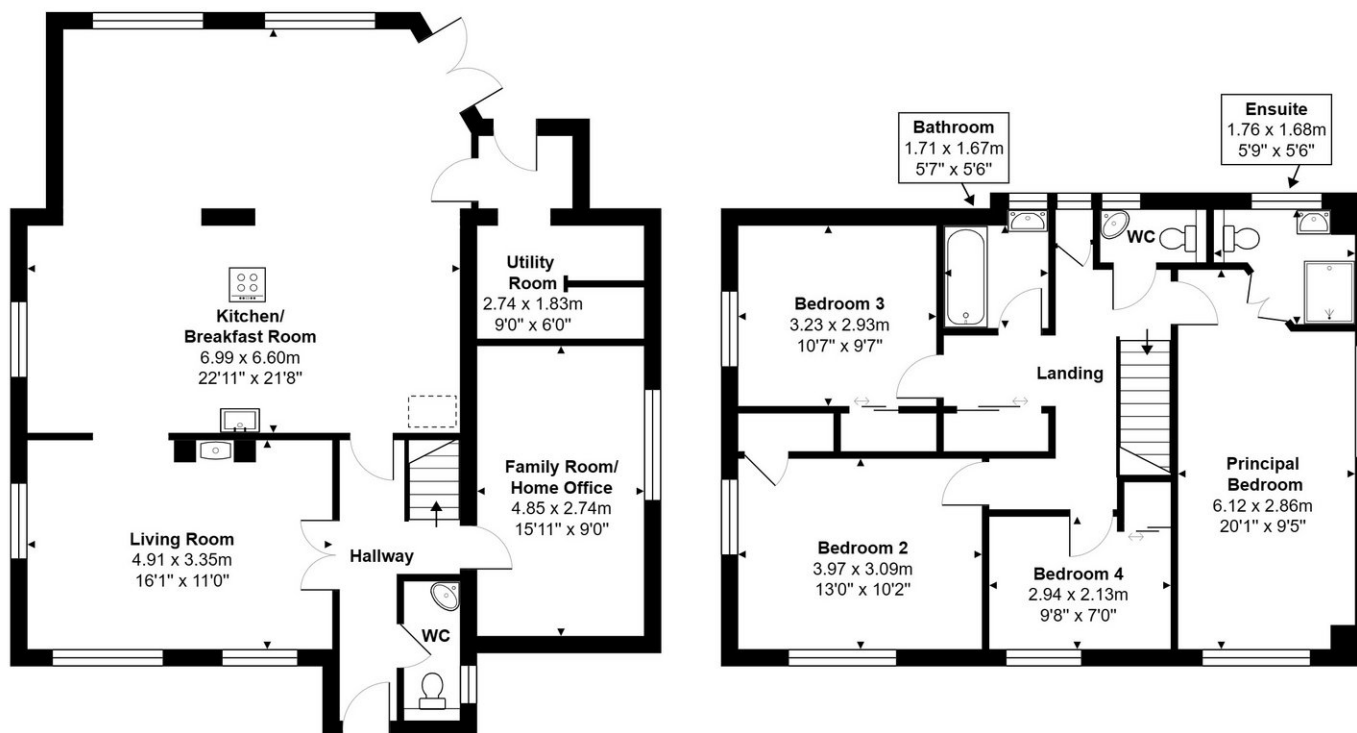
Residents of Hughenden Valley benefit from proximity to an array of esteemed educational institutions catering to children of all ages. From primary schools fostering a nurturing environment for young learners to secondary schools providing comprehensive academic programs, there are ample options to support the educational journey of every child. Additionally, nearby amenities such as libraries and community centers enrich the learning experience, ensuring a well-rounded educational foundation within the close-knit community of Hughenden Valley.





Friars Gardens, Hughenden Valley, HP14 4LU

Approx. Total Area: 154.2 m² ... 1660 ft²



Whilst every attempt has been made to ensure the accuracy of the floorplans contained here, measurements of doors, windows and rooms are approximate and no responsibility is taken for any error, omission or mis-statement. These plans are for representation purposes only.

Kingshills Estate Agents
Comet Studios
Amersham
Buckinghamshire
HP7 0PX

01494 939868
hello@kingshills.co.uk
kingshills.co.uk

Agents Note: Whilst every care has been taken to prepare these particulars, they are for guidance purposes only. All measurements are for general guidance purposes only and whilst every care has been taken to ensure accuracy, they should not be relied upon and potential buyers/tenants are advised to recheck the measurements