



1 Stockings Cottage, Fryers Farm Lane, Lane End, Buckinghamshire, HP14 3NP

Asking Price | £2,100

Property Features

- Three Bedroom Cottage
- Semi-Detached
- Large Garden
- Overlooking Paddocks with Horses
- Modern Kitchen and Bathroom
- Two Reception Rooms/Optional Fourth Bedroom
- Open Fire
- Council Tax Band D
- Unfurnished
- Available Now

Full Description

Nestled within the picturesque countryside of Lane End this 3-bedroom semi-detached cottage that offers a delightful blend of rustic charm and modern comfort. Set against a backdrop of serene paddocks with horses, this idyllic property provides a peaceful and tranquil retreat.

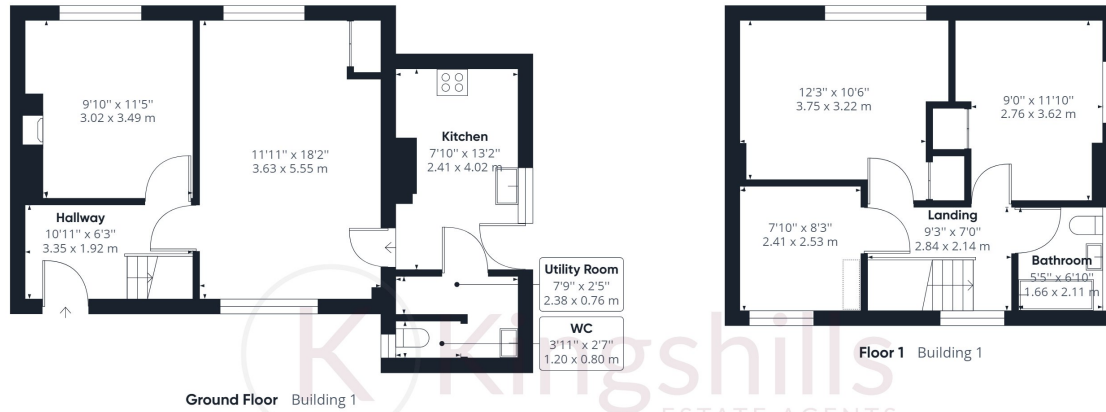
Upon entering the cottage, you'll find the first reception room, featuring a grand fireplace that serves as the focal point of the room. This room could also be utilised as the 4th bedroom. The property offers a spacious 2nd reception room which leads to the modern kitchen. Downstairs also offers a WC. On the first floor the cottage features three well-proportioned bedrooms and a modern family bathroom.

One of the standout features of this cottage is its expansive gardens which offers a breathtaking view of the surrounding paddocks, where the horses graze and gallop, creating a scene that encapsulates the essence of country living. The gardens offer a spacious storage shed, offering practical solutions for housing tools, outdoor equipment, and other essentials.

Situated in the charming village of Lane End, this cottage benefits from a balance between rural serenity and urban convenience. The village offers a selection of local shops, quaint cafes, and essential amenities, while nearby towns provide access to a wider range of shopping, dining, and cultural attractions. The surrounding countryside invites outdoor enthusiasts to explore scenic walking trails, cycle routes, and leisurely strolls along charming lanes.







Approximate total area⁽¹⁾

1442.53 ft²

134.02 m²

(1) Excluding balconies and terraces

While every attempt has been made to ensure accuracy, all measurements are approximate, not to scale. This floor plan is for illustrative purposes only.

GIRAFFE360