



2 Bedroom 2 bath Apartment / Flat,
Merchant Square, Paddington, London W2

<https://qinvestments.london>



An interior-designed 2-bed apartment located in the vibrant and exclusive waterside building of Merchant Square on Edgware Road, with beautiful canal views, set within

- **Size: 739 SqFt / 68.65 SqM**
- **Lift**
- **Luxury furniture and fully fitted kitchen**
- **Porter and building manager on site**
- **24/7 emergency line**
- **Underground Parking**
- **Modern building**
- **Next to shops and restaurants**

Merchant Square, Paddington, London W2

Welcome to this stunning two-bedroom apartment located in the heart of Paddington Basin, in the vibrant and exclusive waterside building of Merchant Square.

The apartment has been meticulously designed with a contemporary edge and modern finishes, making it the perfect abode for those seeking a luxurious and comfortable lifestyle.

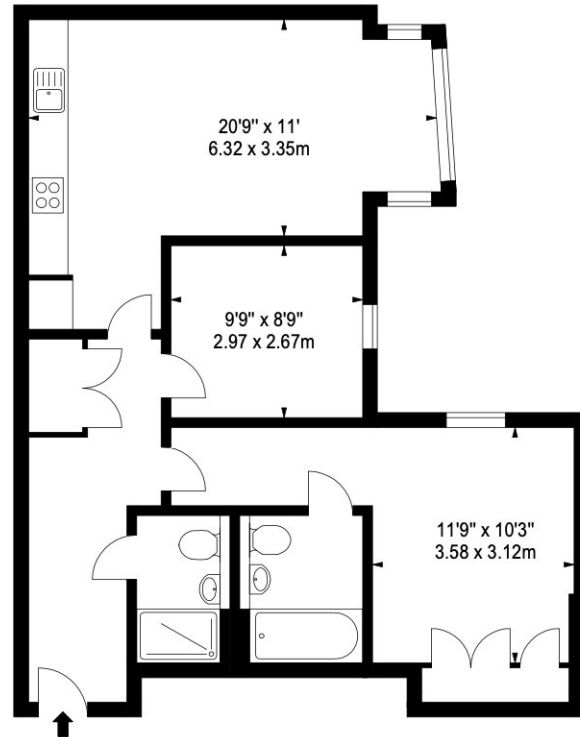
As you step inside, you will immediately notice the spacious open-plan living area, which is flooded with natural light that accentuates the beautiful decor. The large windows provide breathtaking views of the iconic London skyline and the serene waters of the canal. You can enjoy your morning coffee or a glass of wine on the balcony while taking in the beautiful sights.

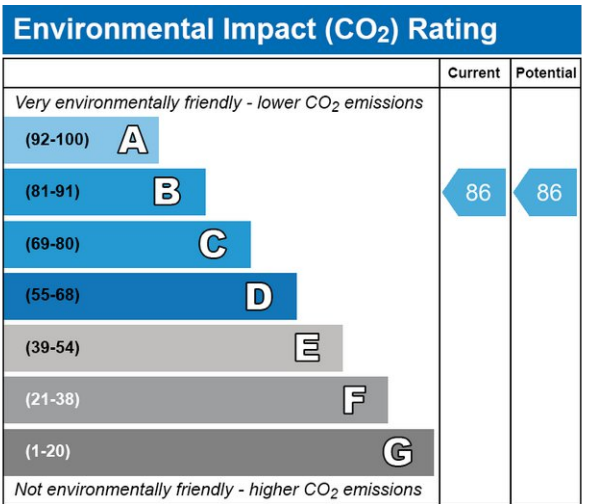
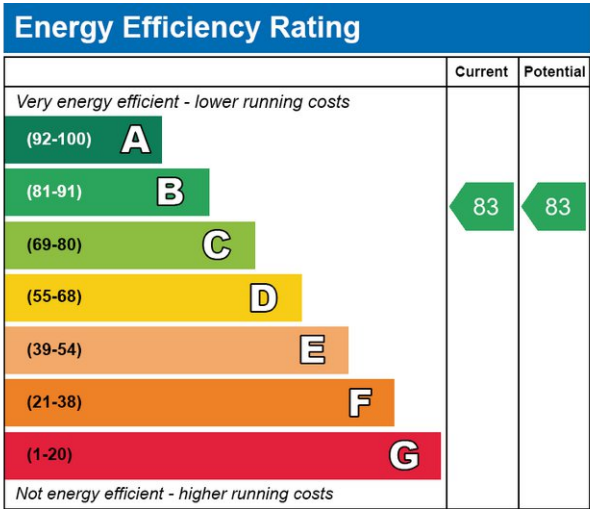
The apartment boasts two elegant bedrooms, perfect for a family or a couple who enjoy having guests over. The bedrooms are spacious and tranquil, creating the perfect sanctuary to retreat to after a busy day in the city. The comfortable beds are fitted with crisp, high-quality linen that promises a good night's sleep.

The modern and fully-equipped kitchen is a cook's dream. It features sleek cabinetry, stainless steel appliances, and ample storage space, making it perfect for preparing and hosting dinners. The marble countertops and state-of-the-art appliances make this kitchen not only functional but also beautiful.

The apartment also features a modern bathroom that exudes a luxurious ambiance. It is equipped with modern fixtures, a walk-in shower, and beautiful tiles that create a serene and peaceful atmosphere.

The Merchant Square building provides an exceptional level of luxury living, with a concierge service, 24/7 security, and beautifully landscaped outdoor spaces. The building's location is perfectly situated, with easy access to some of London's most famous attractions, including Hyde Park, Kensington Palace, and world-renowned shopping destinations like Oxford Street and Regent Street.





CONTACT US

Have a question for us? Please get in touch.

Q INVESTMENTS INTERNATIONAL LTD

T: +44 (0) 7985 487333

E: office@qinvestments.london

INVESTMENTS, REAL ESTATE & LIFESTYLE

Stay connected

Please visit our social media pages.

You can now find us on [Facebook](#), [Twitter](#), [Linkedin](#) and [Instagram](#) and many more!