



10 Eden Gardens, 179 West Wycombe Road, High Wycombe, HP12 3QG

Asking Price | £1,250pcm

## Property Description

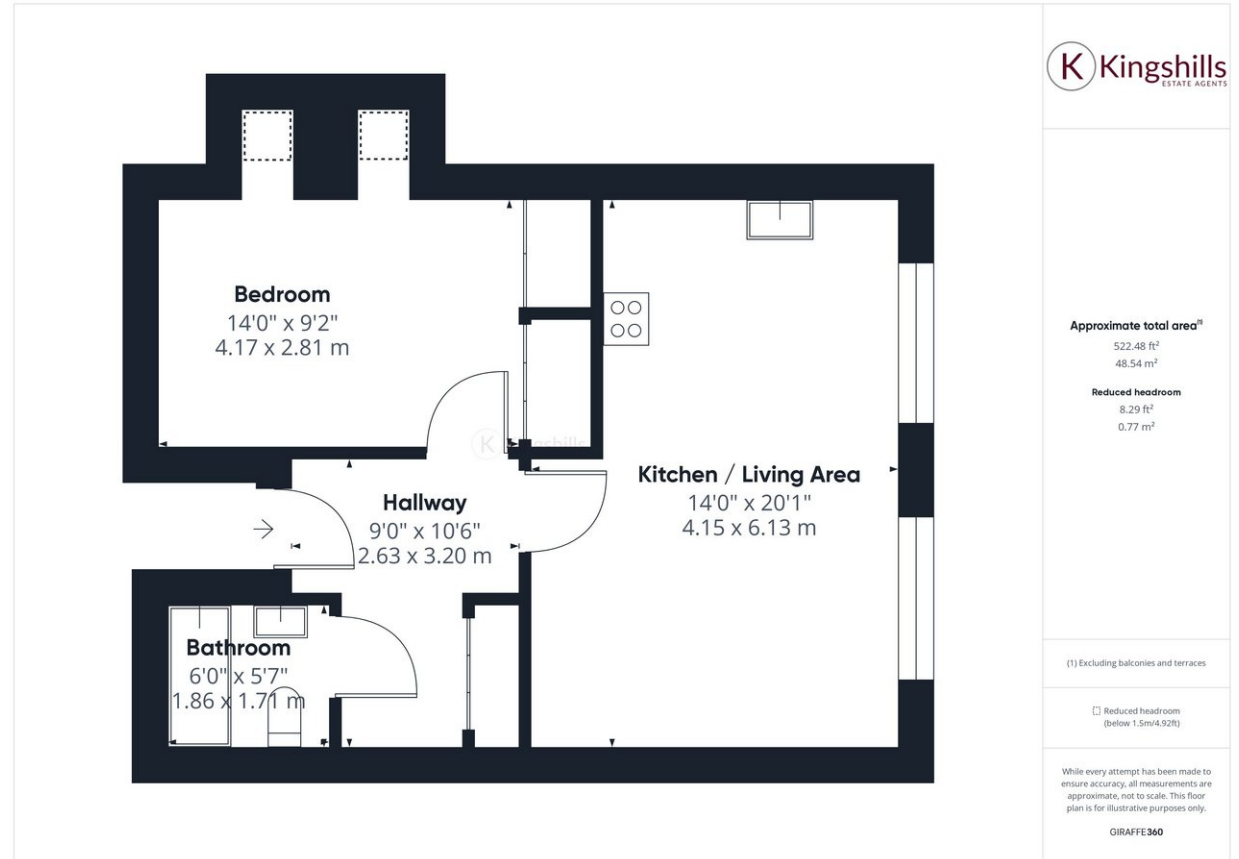
A superb modern attic style apartment with high vaulted ceilings and offering larger than average accommodation for a one-bedroom apartment. The property is located on the west side of High Wycombe and benefits from gas radiator heating and allocated parking to the rear. This apartment must be seen to really appreciate the size of the accommodation.

The accommodation comprises; communal entrance hall, spacious entrance hall for the apartment with good storage, living room/kitchen that has fitted appliances including a dishwasher, double bedroom with two large, fitted wardrobes and modern bathroom.

Enjoying a prime location within walking distance of High Wycombe's vibrant town centre where residents can easily access a plethora of shops, bars, and restaurants. Whether you crave a leisurely stroll, a shopping spree, or a night out on the town, everything you desire is right at your doorstep. Ideally located within walking distance of the train station, commuting to London Marylebone is easy in under 30 minutes. There is also allocated parking within coded electric gates allowing easy access to the motorway links with the M40 accessed at Junction 4 for both London and Oxford and connections to the M25 and M4 being within a short drive.

COUNCIL TAX B

EPC RATING B



Kingshills Estate Agents  
Comet Studios  
Amersham  
Buckinghamshire  
HP7 0PX

01494 939868  
hello@kingshills.co.uk  
kingshills.co.uk

Agents Note: Whilst every care has been taken to prepare these particulars, they are for guidance purposes only. All measurements are for general guidance purposes only and whilst every care has been taken to ensure accuracy, they should not be relied upon and potential buyers/tenants are advised to recheck the measurements