



Property Features

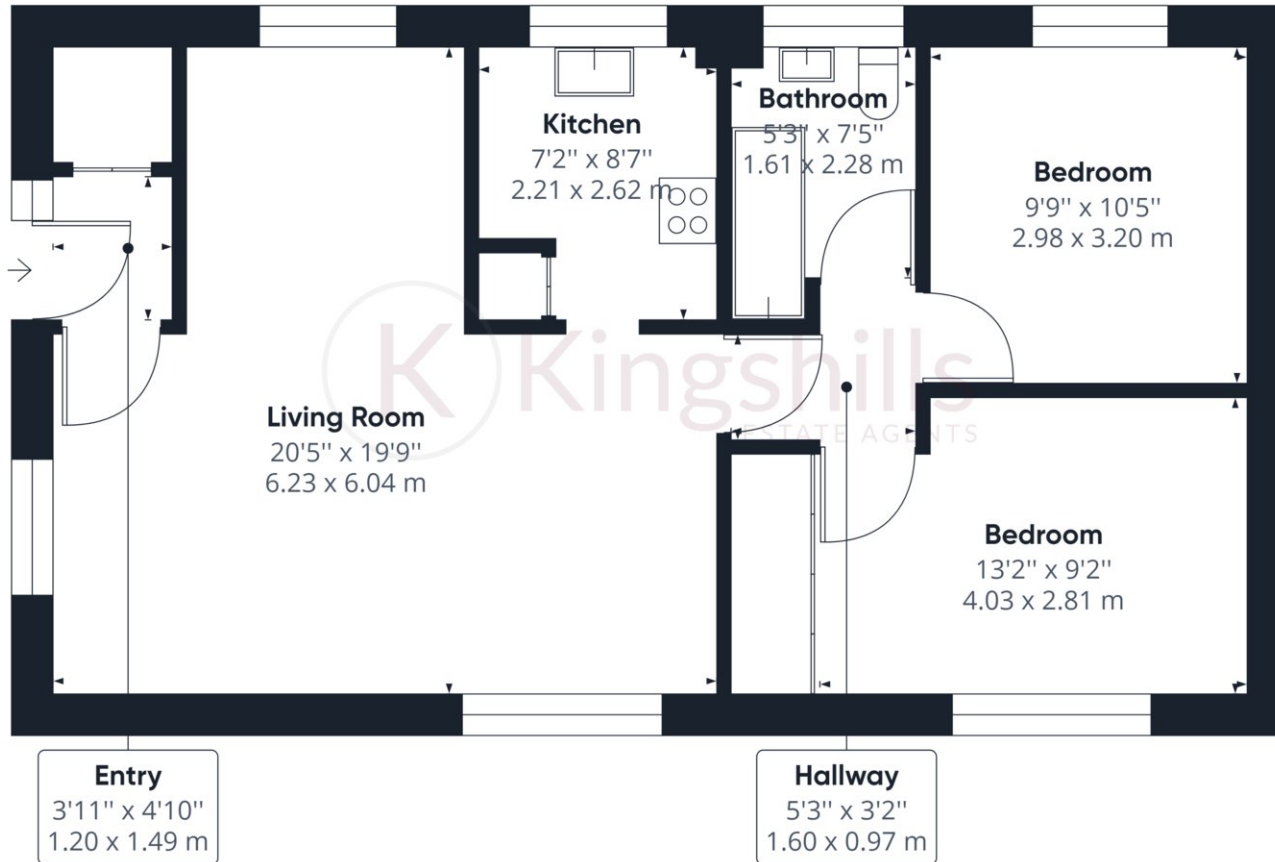
- Two Bedroom Maisonette
- Popular Village Location
- Two Double Bedrooms
- Modern Throughout
- Parking Available on Road
- Communal Gardens
- Within Walking Distance to a Local Shop and Café
- Spacious and Light Throughout
- Unfurnished
- Available From Mid-July

Full Description

A modern and well-presented two-bedroom maisonette, located in a popular estate in Hazlemere which benefits from a communal garden. The property is located within walking distance to local shops, cafes, and parkland. The accommodation comprises; private entrance which leads to a porch area with storage; a bright and spacious living/dining room; modern kitchen with a range of appliances included a dishwasher; two double bedrooms and modern bathroom with a shower. This maisonette offers spacious living accommodation with lots of natural light, in a nice quiet residential area. Available from mid-July on an unfurnished basis.







Approximate total area⁽¹⁾

714.31 ft²

66.36 m²

(1) Excluding balconies and terraces

While every attempt has been made to ensure accuracy, all measurements are approximate, not to scale. This floor plan is for illustrative purposes only.

GIRAFFE360