

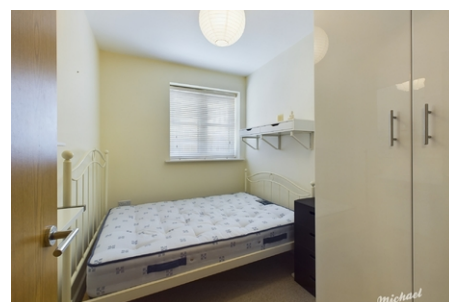
**146 Viridian Square,  
Aylesbury, Buckinghamshire**

**£1,450 PCM**



\* 6 MONTH TENANCY \* A furnished two bedroom top floor apartment situated on Viridian Square. The property is well presented and boasts a security entrance, hallway, family bathroom, two bedrooms with built in storage and an en-suite to the master, an open plan lounge/kitchen/diner with fitted appliances and allocated parking.

Aylesbury Town Centre - A central location within easy reach of local amenities including shopping, sports facilities, eateries, bars and for commuters a mainline rail service which reaches London Marylebone in approximately 55 minutes. The A41 gives fast access to both the M40 & M25 motorway network.



- 6 MONTH TENANCY
- FURNISHED
- TOWN CENTRE
- CLOSE TO STATION
- APPLIANCES INCLUDED
- EN-SUITE TO MASTER