



Flat 2, Treadaway Court, Loudwater, Buckinghamshire, HP10 9QL

Asking Price | £220,000

Property Description

This stylish and contemporary nearly new one-bedroom apartment located on the outskirts of High Wycombe. This lovely modern home features a secure entry system and an allocated parking space for the resident.

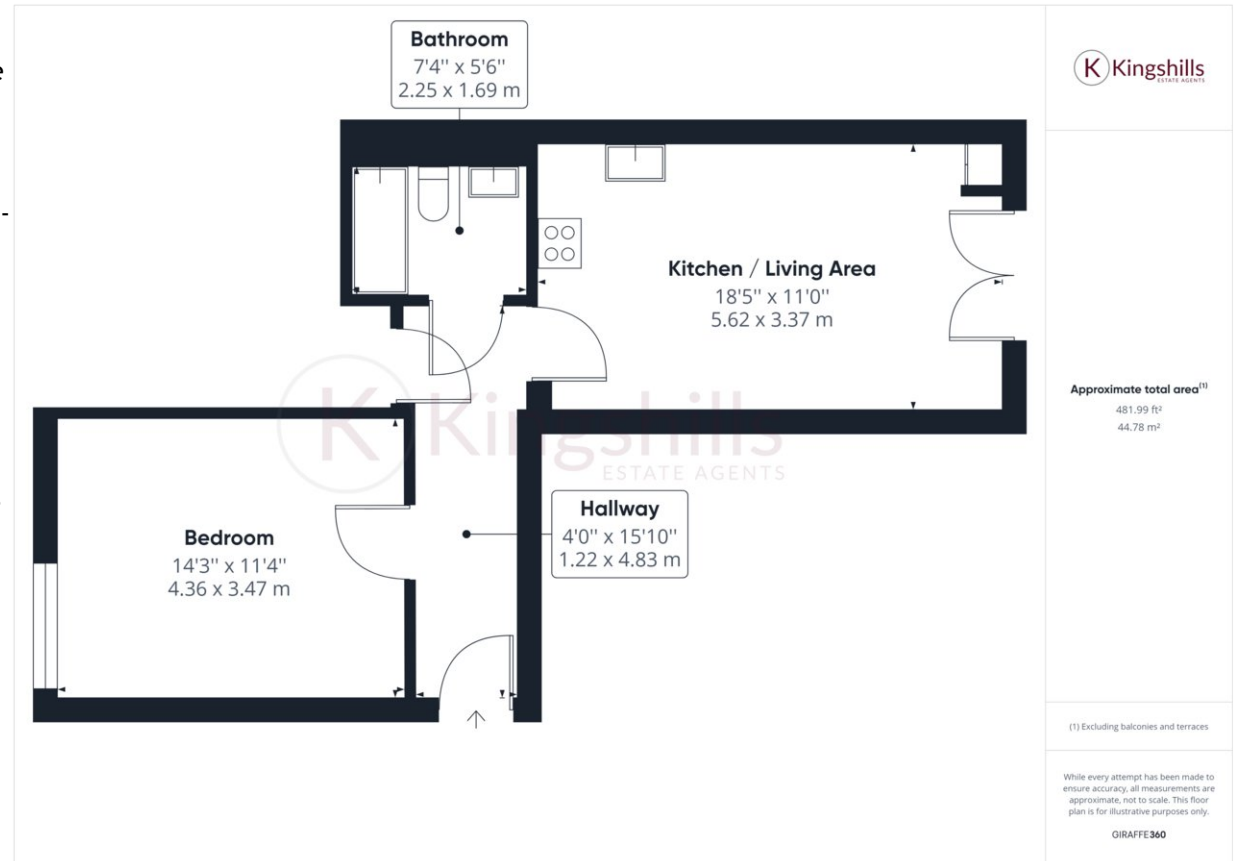
The apartment is immaculately presented and comprises of an open-plan living/kitchen/dining area that is spacious and well-lit with natural light and benefits from a Juliet Balcony of the Living area. The modern kitchen is fully equipped with a built-in oven and hob, fridge and washing machine. The large double bedroom is well-proportioned and is over looking the front aspect.

The property boasts a prime location just a short distance from Kingsmead playing fields and benefits from excellent transport links to London and the surrounding areas. The apartment is within a short drive to the High Wycombe Train Station, which operates a fast and reliable Chiltern Railways service; this enables easy access to London Marylebone in less than half an hour.

Service Charge: £100 pcm / Ground Rent: £216 pa
Lease: 125 years

EPC RATING 77 C / Council Tax Band B

In summary, this one-bedroom apartment for sale in High Wycombe is a fantastic opportunity for first-time buyers or investors looking for a modern and hassle-free property in a sought after location with excellent links to London.



Kingshills Estate Agents
Comet Studios
Amersham
Buckinghamshire
HP7 0PX

01494 939868
hello@kingshills.co.uk
kingshills.co.uk

Agents Note: Whilst every care has been taken to prepare these particulars, they are for guidance purposes only. All measurements are for general guidance purposes only and whilst every care has been taken to ensure accuracy, they should not be relied upon and potential buyers/tenants are advised to recheck the measurements