



PINEBROOK
ESTATES

PRESENTS

CHESTEFIELD HOUSE, CHESTERFIELD GARDENS, MAYFAIR W1J

Albert Hall Mansions



London 'Pied-A-Terre' Home or Investment In the Heart of Mayfair

An elegant three-bedroom lateral apartment set on the first floor in this full of character Grade II listed red brick mansion block. Conveniently located right next to the iconic Royal Albert Hall as well as the block directly overlooking the Hyde Park and Albert Memorial.



- Three double bedroom
- Two bathroom
- Guest cloakroom
- First floor
- Private balcony
- High ceilings
- Period features
- 24/7 Concierge
- Lift
- Abundance of light
- Prime South Kensington
- Near transport
- Near museums
- Share of Freehold
- Close by Kensington Gardens

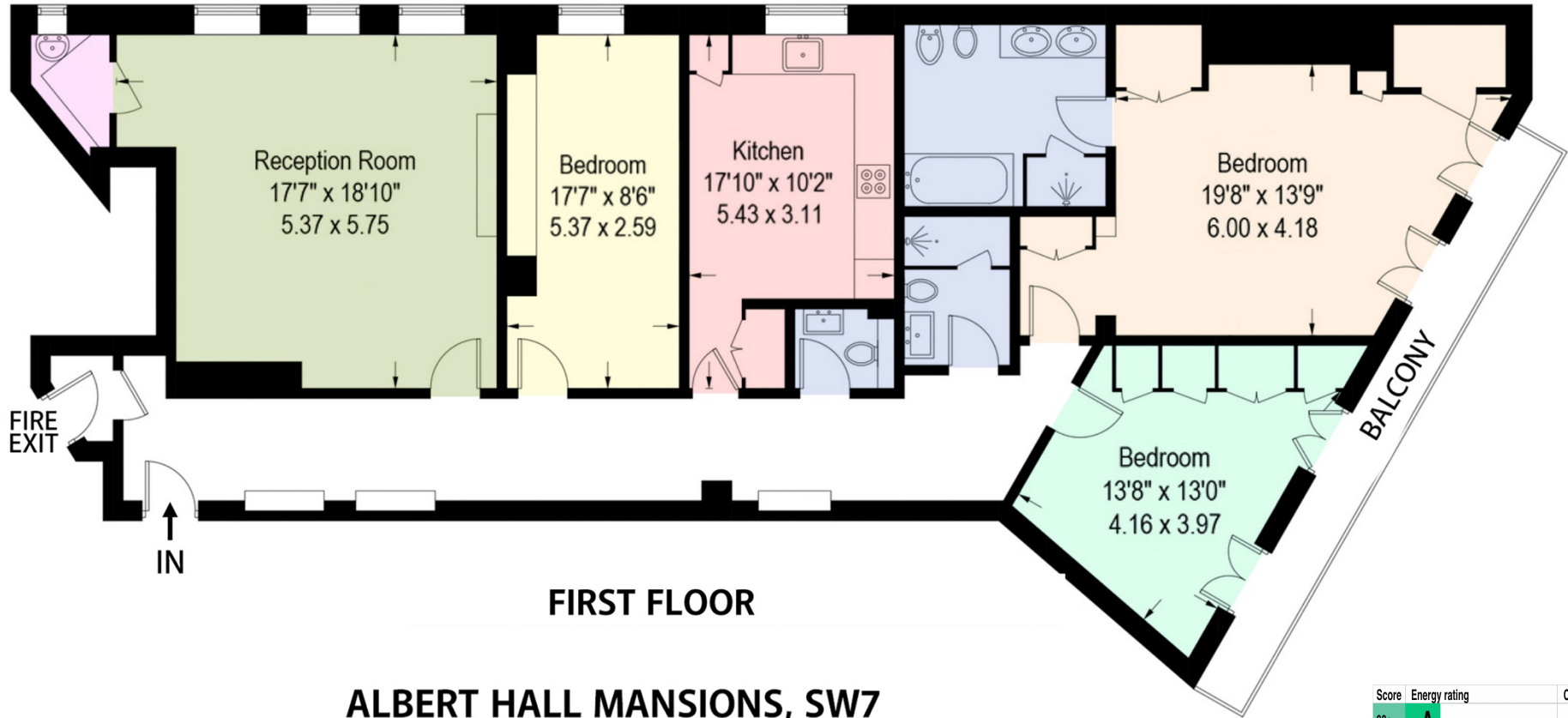
Positioned next to iconic Royal Albert Hall and the neighbourhood characterised by stunning architecture and beautiful Kensington Gardens.



This impressive property stands out with its exceptionally high ceilings, tall French double doors leading to a private balcony. Furthermore, the apartment comprises of three double bedrooms, an eat-in kitchen, two bathrooms one en-suite, and a guest WC. In addition, there is a lift in the block and a 24/7 concierge.







FIRST FLOOR

ALBERT HALL MANSIONS, SW7

Approximate Gross Internal Area 1567 sq ft / 145.6 sq m

Not to scale, for guidance only and must not be relied upon as a statement of fact.
 All measurements and areas are approximate only.

Score	Energy rating	Current	Potential
92+	A		
81-91	B		
69-80	C		
55-68	D	65 D	66 D
39-54	E		
21-38	F		
1-20	G		



Viewings strictly by appointment.
Please contact our agent Bozena Dela

4th Floor Silverstream House,
45 Fitzroy Street, Fitzrovia
London W1T 6EB

M: + 44 (0) 7863172705
T: + 44 (0) 203 7277977

 info@pinebrookestates.co.uk

 www.pinebrookestates.co.uk

