



14 Milton Gardens, Princes Risborough, Buckinghamshire, HP27 9DD

Asking Price | £255,000

Property Features

- Ground floor Apartment
- Located within a stones throw of Princes Risborough train station
- Open Plan Living/Dining area
- Re-fitted stylish kitchen
- Extended Lease
- Modern Family Bathroom
- Convenient for town centre
- Residents and visitor parking
- Close to country walks
- EPC 72 C / Council Tax Band C

Full Description

Situated in the charming town of Princes Risborough and conveniently located close to the train station, this immaculate apartment offers modern living with easy access to transportation. Boasting two bedrooms, a recently refitted kitchen and bathroom, allocated parking, and additional visitor parking, this property is an ideal choice for professionals, commuters, or those seeking a comfortable and well-maintained home.

The apartment features two bedrooms with neutral decor creating a calming ambiance, providing a perfect retreat for relaxation. The recently refitted kitchen, showcases contemporary design and functionality. Equipped with modern appliances and ample storage, it caters to both culinary enthusiasts and those who appreciate a stylish living space.

The living/dining area is thoughtfully arranged, offering a comfortable space for everyday living and entertaining. Large windows allow for plenty of natural light, creating a bright and inviting atmosphere. The bathroom has been tastefully renovated, featuring modern fixtures and finishes along with a clean and sophisticated design

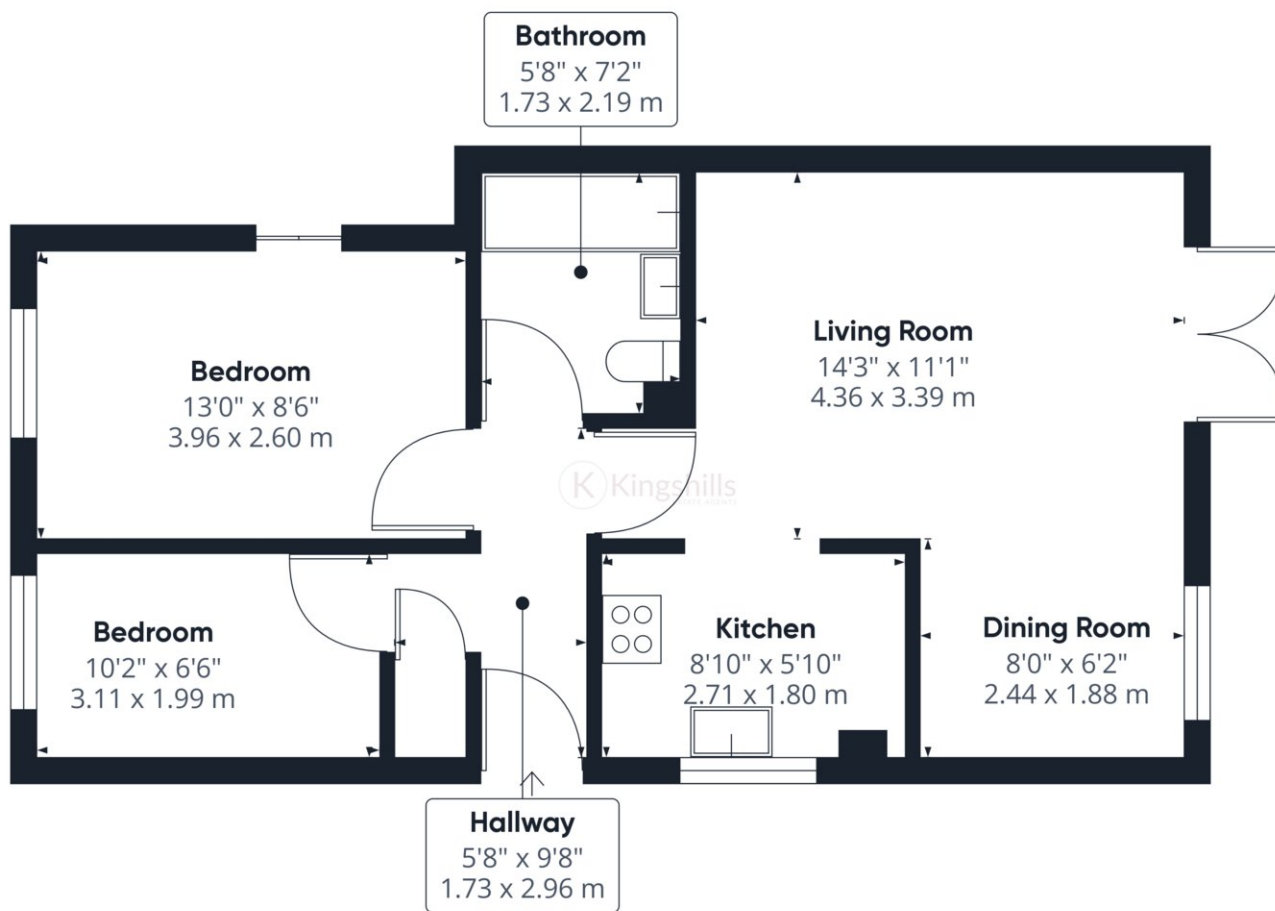
Outside there are communal grounds and the convenience of residents parking. Additional visitor parking is available for guests. The apartment's close proximity to the train station provides easy access for commuters, making it an excellent choice for those who rely on public transportation for work or leisure.

Tenure: Leasehold Lease: Approx. 180 years remaining
Ground Rent: £120 per annum Service Charge: £1,245 per annum

This apartment in Princes Risborough not only offers a stylish and well-maintained living space but also provides the convenience of being close to transportation hubs. Whether you're a commuter or simply seeking a comfortable home in a picturesque town, this property is sure to impress. Don't miss the opportunity to make this apartment your own and enjoy the best of Buckinghamshire living.







Approximate total area¹⁾

543.36 ft²
50.48 m²

Excluding balconies and terraces

While every attempt has been made to ensure accuracy, all measurements are approximate, not to scale. This floor plan is for illustrative purposes only.

GIRAFFE360