



**2 Bedroom 2 bath Apartment,
Ponton Rd, London SW11**

<https://qinvestments.london>



This stunning 2-bedroom, 828 sq ft apartment in the prestigious Nine Elms Park development offers an elevated, luxurious London living experience with iconic skyline views, exceptional resident amenities like a 24-hour concierge and residents' lounge.

- 828 sq ft / 77 sqm
- Balcony / Winter garden
- 24-hour concierge
- Residents' lounge
- Good rental investment

Ponton Rd, London SW11

Spacious, well-proportioned 828 sq ft 2-bedroom, 2-bathroom apartment, featuring an elegant balcony, on-site amenities including a concierge and residents' lounge, and a prime location at the heart of London's dynamic urban landscape.

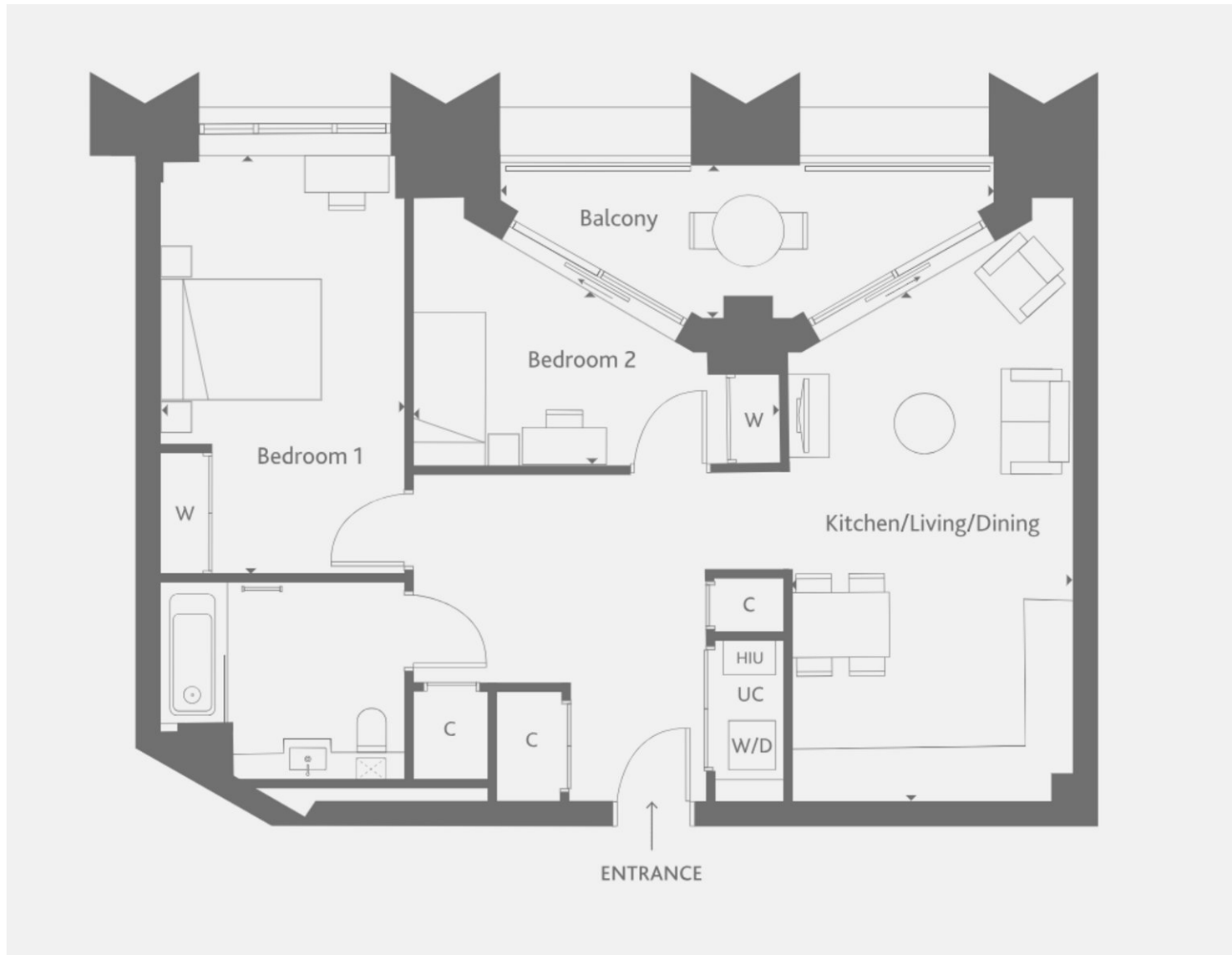
Elevate your living experience with unparalleled resident amenities, including:

24-hour concierge

Residents' lounge

Service Charge: £5.29 per sqft per annum

Please note images are computer generated and are for indicative purposes only.



CONTACT US

Have a question for us? Please get in touch.

Q INVESTMENTS INTERNATIONAL LTD

T: +44 (0) 7985 487333

E: office@qinvestments.london

INVESTMENTS, REAL ESTATE & LIFESTYLE

Stay connected

Please visit our social media pages.

You can now find us on [Facebook](#), [Twitter](#), [Linkedin](#) and [Instagram](#) and many more!