

Meadow View

BISHOP'S DRIVE, BALTONSBOROUGH, SOMERSET, BA6 8FX

St. Dunstan's House

(Plot 17)

Ready
Summer
2024



A beautiful corner plot, tucked away on the edge of this prestigious development

Four beds, three baths | Study & Utility/Boot Room | Charming private gardens
Large double garage with private driveway

- Kitchen island with quartz worktops
- Private 7kW EV Charging Point
- Featuring local natural blue lias stone
- Woodburning stove
- 10 year warranty
- Superfast broadband capabilities

Asking price: £875,000

Selling agents:

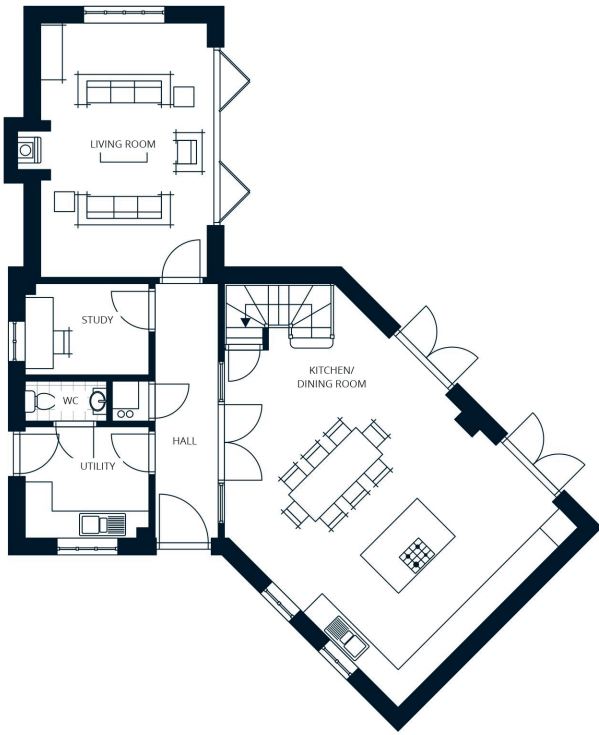
holland & odam

01458 833123

hollandandodam.co.uk

A development by:

GALION



Ground Floor

Kitchen/Dining	7.70m x 5.70m
Living Room	5.45m x 3.75m
Study	2.67m x 2.07m
Utility	2.79m x 2.51m



First Floor

Master Bedroom	5.70m x 4.39m
Bedroom 2	3.75m x 5.19m
Bedroom 3	4.54m x 3.08m
Bedroom 4	2.58m x 2.53m



Notes:
