

FOR ENQUIRIES PLEASE CONTACT: Q INVESTMENTS INTERNATIONAL LTD
T: +447985487333 E: office@qinvestments.london W: <https://qinvestments.london>



WEMBLEY PARK GARDENS

PARK GARDENS

WEMBLEY PARK GARDENS



Welcome to the latest chapter in the capital's most exciting regeneration story.

Set in the heart of north-west London's iconic, cultural hotspot, Wembley Park Gardens is a landmark new development of 302 high quality new homes for private sale.

With fantastic transport links and world-class amenities on your doorstep, this collection of one and two-bedroom apartments presents the very height of modern, sustainable, city living.

**A NEW
WAY OF LIFE**





EXPERIENCE **LONDON** **LIVING** AT ITS MOST VIBRANT WHEN YOU MAKE A HOME IN THIS **THRIVING HUB**

Wembley Park Gardens' residents will join a growing urban community nestled right in the middle of a world-class leisure destination.

Take in a match at the iconic Wembley Stadium, watch the stars on stage at the OVO Wembley Arena, experience an array of international street food at Boypark and dip into designer shopping at the London Designer Outlet. It's all on your doorstep.

And when you want to explore a little further afield, Bond Street and central London are just 16 minutes away by tube.



HELLO WEMBLEY...



"THE VISION FOR THE WHOLE
AREA IS INCREDIBLE AND
IT FEELS LIKE A REAL
COMMUNITY

KAYE SOTOMI

CEO of Chop-Chop



A STRONG COMMUNITY THAT'S CREATING ITS OWN FUTURE

Wembley Park has been at the beating heart of British history for over a century, hosting sporting legends and global stars.

1923

The big
kick off

Wembley Stadium was originally built for The British Empire Exhibition of 1924. Finished ahead of schedule, the stadium hosted the 1923 FA Cup Final just four days after its opening by King George V.

1948

Sporting
greatness

The venue hosted the 1948 Summer Olympic Games and the 1966 World Cup final between England and Germany.

1985

Bringing
the world
together

The huge Live Aid concert took place on Saturday July 13th. Featuring the biggest music stars of the day, including Queen, David Bowie and Paul McCartney, the concert aimed to raise money and awareness for famine relief in Africa.

2007

An icon,
reborn

As part of the regeneration of the area, the stadium was rebuilt with its now signature arch. It remains home turf for the men's and women's national football teams, as well as welcoming fans for NFL games and huge concerts by the world's biggest performers.

2019

Talking about
regeneration

Wembley continues to grow as an extraordinary shopping, dining and entertainment destination, with the 2,000-seater Troubadour Theatre joining the London Designer Outlet and Boxpark Wembley. The theatre was chosen as the recent home of celebrated Disney musical, Newsies.





£2.5 BN

regeneration investment¹

11,500

new homes to be provided by 2026¹



16.4 M

visitors per year³

10,000

new jobs created by 2026¹



"THE AREA IS ON TRACK TO MEET ITS VISION OF BEING LONDON'S BRIGHTEST TRANSFORMATION STORY"

Wembley has leaped forward from its historic sporting roots to become one of the biggest regeneration projects in the UK.

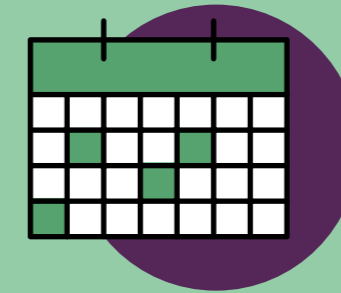
For residents, local modern amenities and open spaces have been the focus, with even easier connections into central London, and out to the likes of Fryent Park and its 260 acres of parkland.

Green transport additions and new cycling routes add to the sense of contemporary living, while the newly created seven-acre Union Park – the first major park to open in the area for 150 years – brings a welcome focal point for the local community to enjoy music, art, sport, play, or even just some fresh air.

¹ Source: Brent Council

² Source: JLL

³ Source: Wembleypark.com



49%

increase in Wembley rents vs 23% for London in last five years²



£17.8M

investment in public realm improvements along Olympic Way²



57%

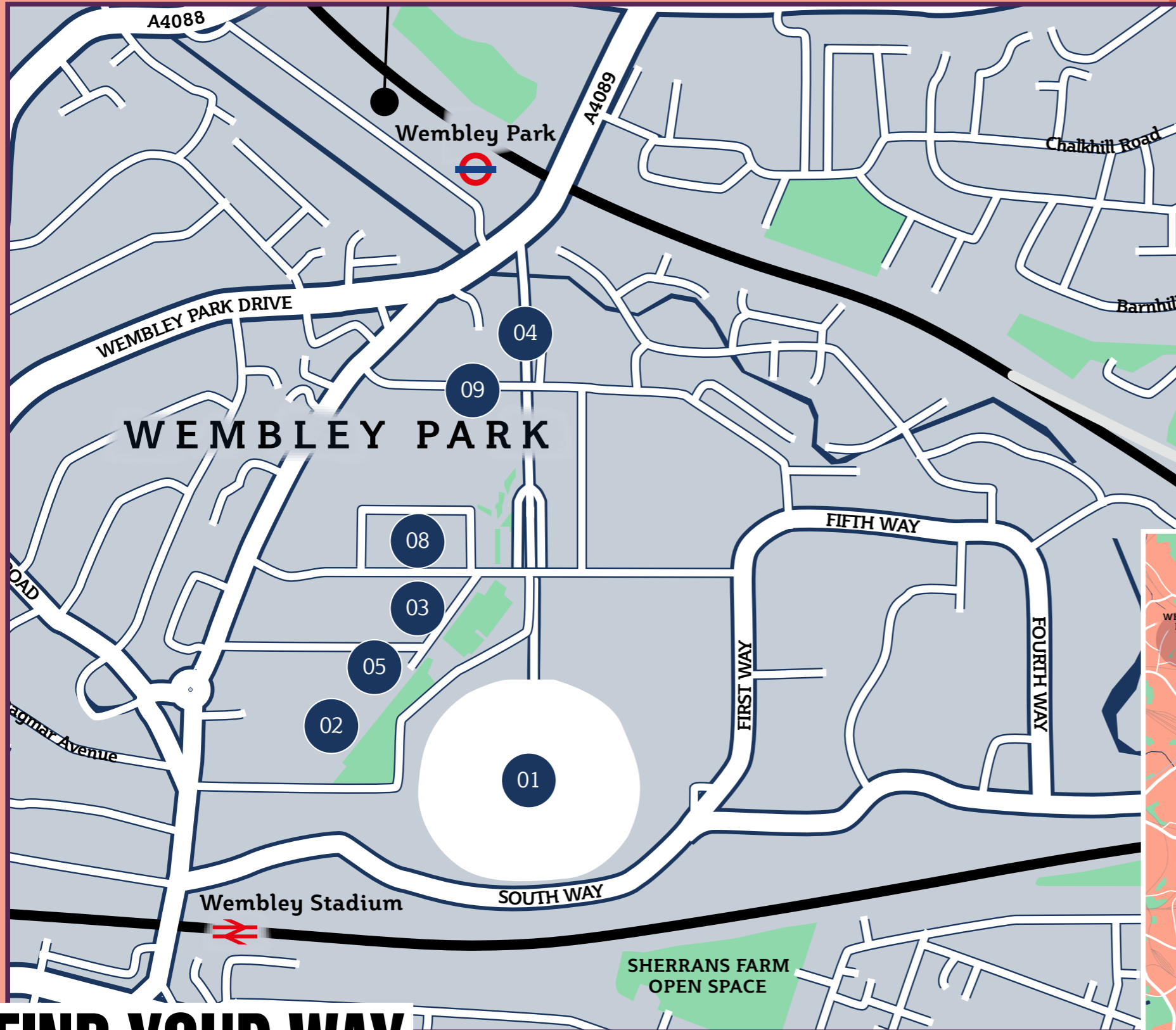
10-year price growth²

BE PART OF THE CHANGE

1,000+ ACRES

of public open space in the local area¹

REGENERATION



Getting around the local area is easy, with all the shops, restaurants and cultural facilities of Wembley just a short stroll away.



FIND YOUR WAY HERE

- | | |
|---------------------------------------|-------------------------------------|
| 01 Wembley Stadium | 08 Brent Civic Centre & Sainsbury's |
| 02 London Designer Outlet & Cineworld | 09 Boxpark Wembley |
| 03 Wembley Arena | 10 Wembley Park Troubadour Theatre |
| 04 Olympic Way | |
| 05 Hilton Hotel and rooftop bar | |

20MINS
to central London



WALK

Wembley Park Station



1MIN

Wembley Stadium



9MINS

Union Park



10MINS

Fryent Country Park



18MINS

Wembley Central Station



18MINS

Welsh Harp Reservoir



25MINS



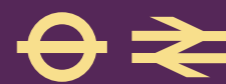
Wembley Park Station, just a few minutes' walk away, is well served by two tube lines. The Metropolitan line brings easy access to Baker Street, King's Cross and Farringdon – perfect for City workers.

BETTER CONNECTED

The Jubilee line, meanwhile, offers a direct route to the green space and charm of West Hampstead and its many boutiques.

It's also a simple journey to Bond Street, which has Elizabeth line connections, as well as Waterloo and London Bridge, for those seeking travel outside London to the south coast.

Add in over 700 bicycle parking spaces on-site and an abundance of cycling and pedestrian-friendly routes in the local area, and Wembley Park Gardens is fantastically well-connected for a busy city lifestyle.



PUBLIC TRANSPORT

London Marylebone



14MINS

Bond Street



16MINS

Kings Cross



21MINS

Farringdon



24MINS

Paddington



24MINS

Liverpool Street



25MINS

M1
15-minute drive

WEMBLEY HAS SOMETHING FOR EVERY TASTE

Already a shopping destination for those living across the capital, Londoners are drawn to the variety of shops near Wembley Park tube station. From mainstream retailers to independent boutiques, luxury homeware to beauty, the choices are endless.

London Designer Outlet, on Wembley Park Boulevard, just a 10-minute walk away, is the big pull for locals and tourists alike. Iconic British brand M&S sits alongside global brands such as Levi's, Calvin Klein and Superdry, to name a few.

Wembley Park is also home to a fantastic selection of independent boutiques and studios, with several emerging sustainable businesses now thriving, and a dining district offering global cuisine.

This is all enhanced by being able to reach central London's famous designer stores in under half an hour.

A SHOPPING HAVEN

GET TO KNOW YOUR WAY AROUND

Wembley Park

3 mins walk away

A market vibe with more eclectic, independent stores.

London Designer Outlet

10 mins walk away

Iconic British labels and the place to find the leading global sportswear brands.

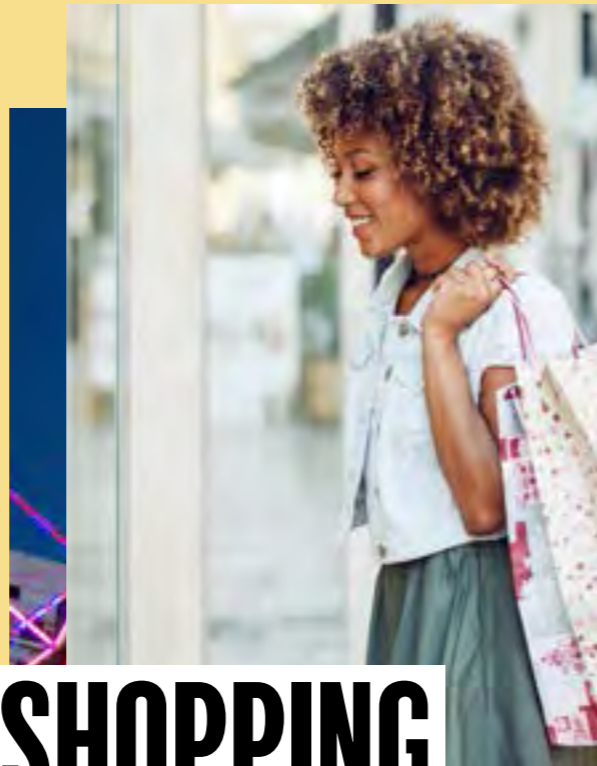
Wembley Central

27 mins walk away

Local bakeries and high-street shopping with some brilliant specialist grocery shops.

Notable shops include:

Adidas
Asics
Calvin Klein
Converse
Guess
Kurt Geiger
Lee Wrangler
Levi's
Lindt
M&S
New Balance
Nike
Puma
Reply
Sony
Superdry
The North Face
Tommy Hilfiger
Vans



500,000 SQ FT

of retail and leisure

Source rightmove.co.uk



SHOPPING



A BRILLIANT CHOICE OF SCHOOLS AND UNIVERSITIES TO UNLEASH THE LEARNING POTENTIAL OF EVERY GENERATION

EDUCATION

A LOCAL EDUCATION

Learning potential is unrivalled in the Wembley area, with many schools achieving an Outstanding rating from Ofsted. And for those moving on to higher education, London's best universities are all easily accessible thanks to improved transport links.

PRIMARY SCHOOLS

All with Outstanding Ofsted rating

St Joseph's Catholic Junior School

Selborne Primary School

SECONDARY SCHOOLS

All with Outstanding Ofsted rating

Wembley High Technology College

Claremont High School

Ark Academy

Michaela Community School

INDEPENDENT SCHOOLS

All within a 17-min walk

Buxlow Independent Preparatory School

St Christopher's Independent Precatory School

Lycée international de Londres Winston Churchill

OTHER UK INSTITUTIONS

All under two hours' journey

University of Oxford

University of Cambridge

LONDON INSTITUTIONS

All under an hour's journey

London School of Economics and Political Science (LSE)

Imperial College London

University College London (UCL)

King's College London

Queen Mary, University of London (School of Law)

University of the Arts London

City, University of London

School of Oriental and African Studies (SOAS)

Goldsmiths, University of London

University of West London



500,000

overseas students enroll in UK higher education each year (ucas.com)

WEMBLEY PARK GARDENS



Rising to 21 storeys at its highest point, Wembley Park Gardens will offer 302 one and two-bedroom high quality, energy-efficient apartments within this fantastic new addition to the iconic Wembley skyline.

Thoughtful, open-plan layouts deliver spacious, flowing interiors, creating highly flexible living areas, ideal for modern, city living.

Adding to the sense of space, floor-to-ceiling windows fill the homes with natural light, maximising the fantastic views across the area's celebrated landmarks.

A private balcony or terrace to every home provides a great outdoor extension to the living areas, creating the perfect space for relaxing or entertaining.

Apartments feature stylish, fitted kitchens with modern, integrated appliances, including a high-quality oven, hob, microwave, dishwasher and fridge freezer.

The contemporary bathrooms, with beautifully tiled walls and floors, have a clean and attractive atmosphere, with two-bedroom apartments also offering a separate en suite to the main bedroom for added privacy.

As its name suggests, landscaped podium gardens connect the individual blocks, creating an oasis of calm away from the bustling local area in which to meet with friends or simply escape to nature just moments from your front door.

To help relieve the stresses of a fast-paced city lifestyle, a proposed residents' concierge service will also be available for added convenience.

302

1 & 2-bedroom, high-quality apartments





W

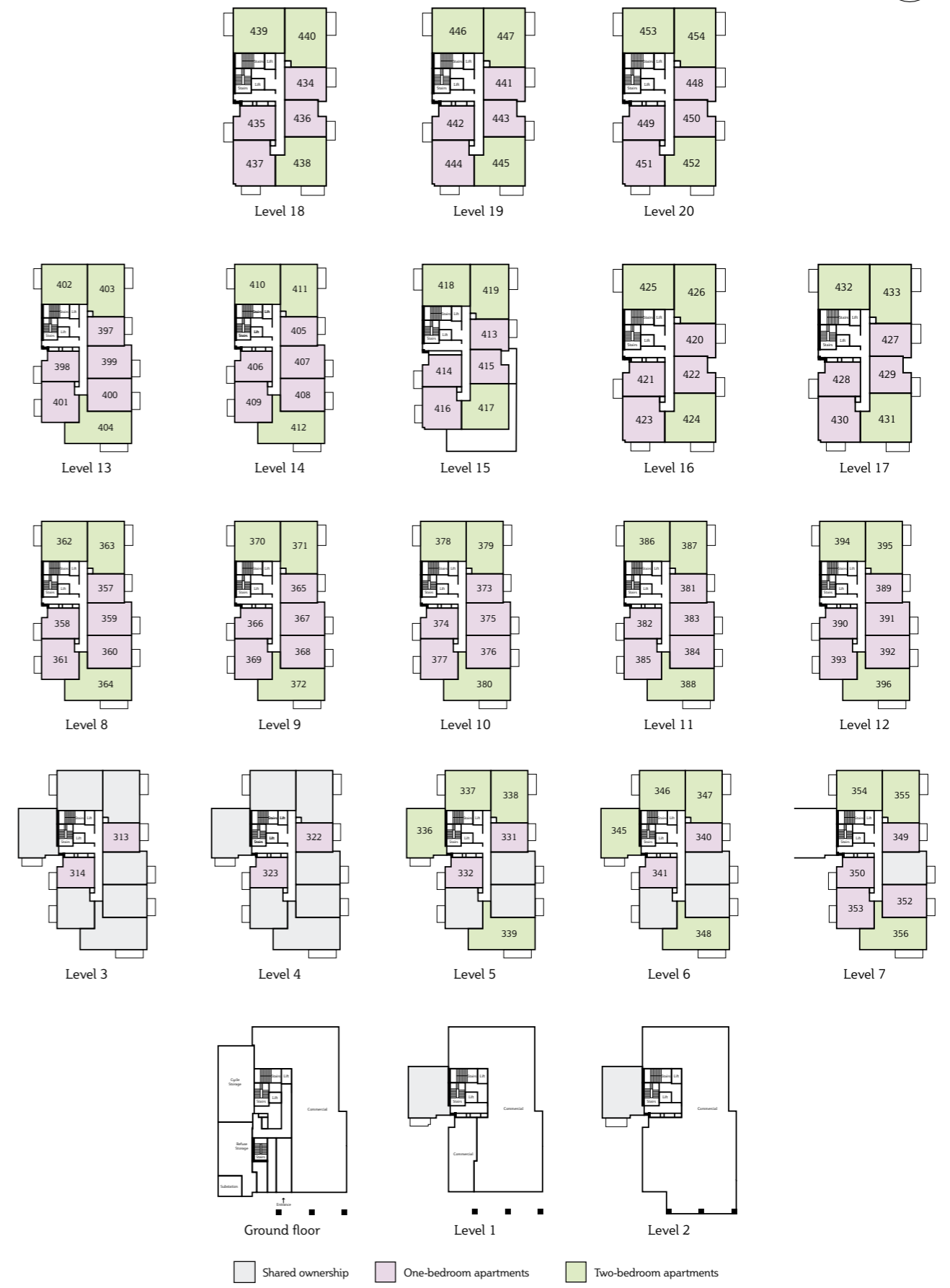
PULLMAN HOUSE



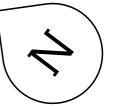
C Concierge



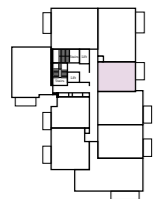
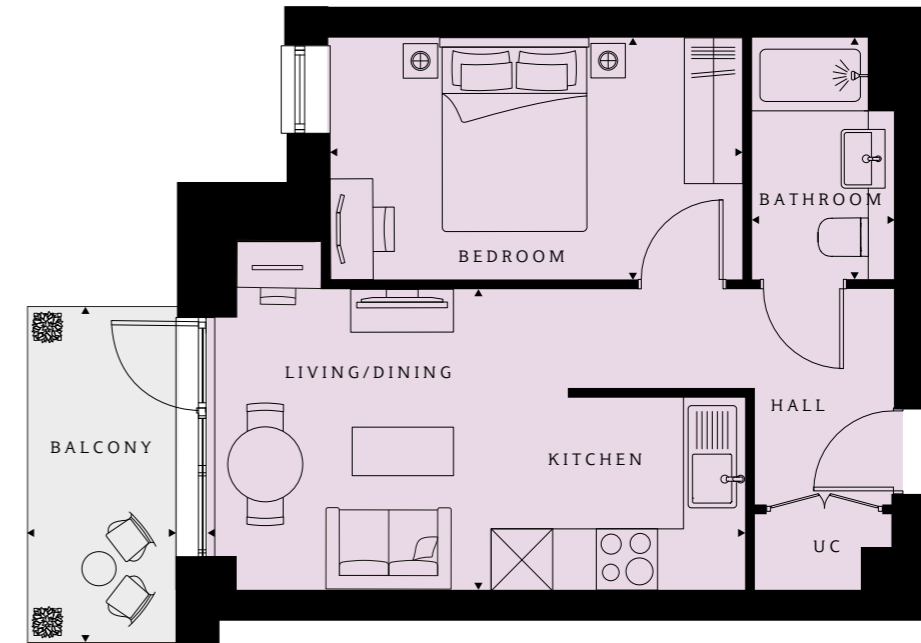
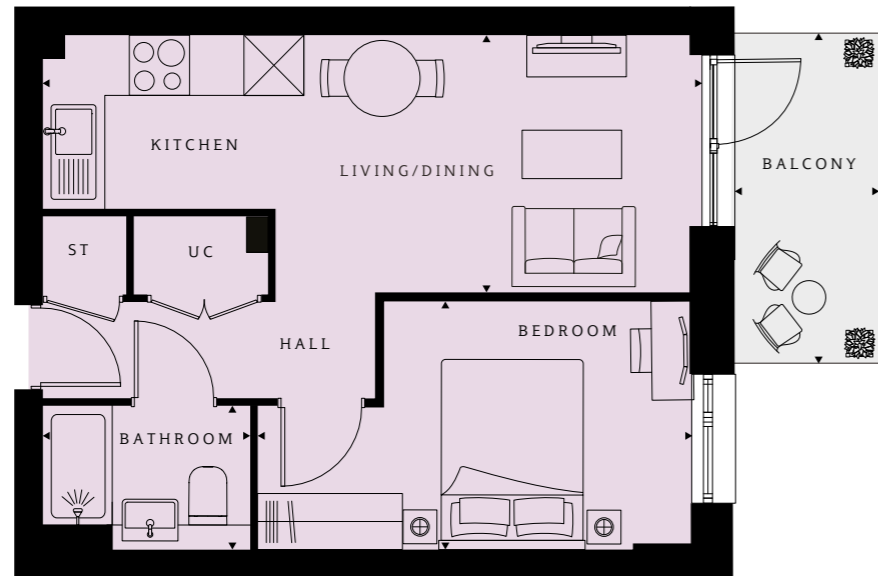
WEMBLEY STADIUM
8-MINUTE WALK



PULLMAN HOUSE



1 BEDROOM APARTMENT



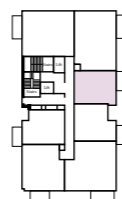
Levels 3 to 6



Levels 7 to 14



Level 15



Levels 16 to 20

Floor	Plot
20	448
19	441
18	434
17	427
16	420
15	413
14	405
13	397
12	389
11	381
10	373
9	365
8	357
7	349
6	340
5	331
4	322
3	313
2	
1	
G	

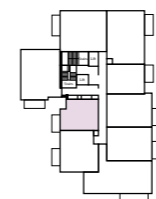
Living/Kitchen/Dining
22'5" x 8'11" (6828 x 2728mm)

Bedroom
13'5" x 8'8" (4098 x 2630mm)

Bathroom
7'3" x 4'11" (2200 x 1500mm)

TOTAL AREA
402 ft² (37 m²)

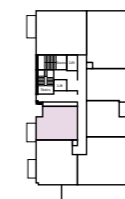
Balcony
11'5" x 5'1" (3478 x 1550mm)



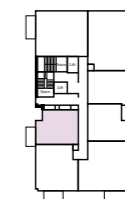
Levels 3 to 6



Levels 7 to 14



Level 15



Levels 16 to 20

Floor	Plot
20	449
19	442
18	435
17	428
16	421
15	414
14	406
13	398
12	390
11	382
10	374
9	366
8	358
7	350
6	341
5	332
4	323
3	314
2	
1	
G	

Living/Kitchen/Dining
17'5" x 10'4" (5297 x 3144mm)

Bedroom
14'0" x 8'2" (4267 x 2500mm)

Bathroom
8'2" x 4'11" (2500 x 1500mm)

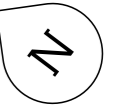
TOTAL AREA
406 ft² (38 m²)

Balcony
11'5" x 5'1" (3478 x 1550mm)

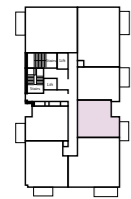
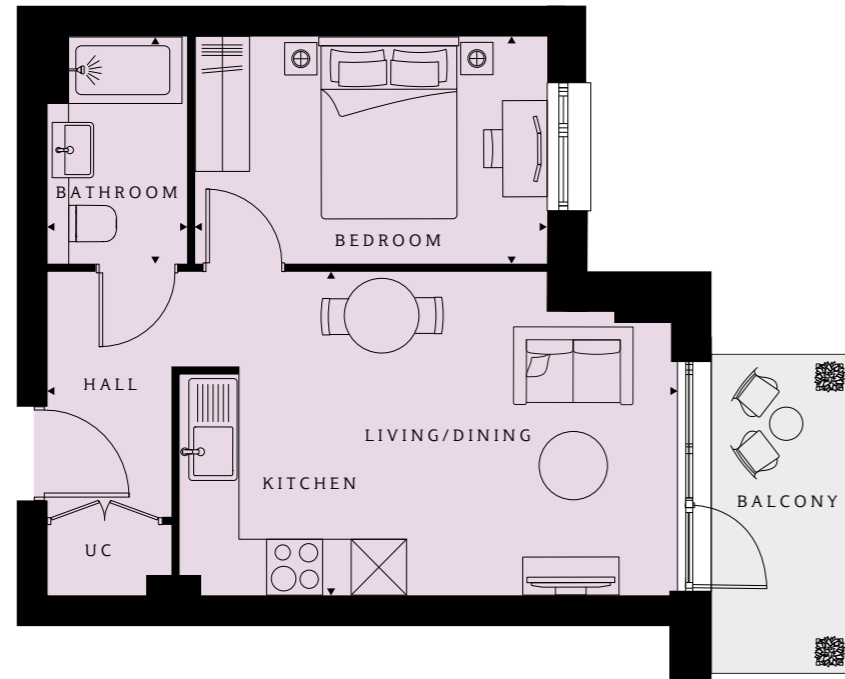
Floor	Plot
20	449
19	442
18	435
17	428
16	421
15	414
14	406
13	398
12	390
11	382
10	374
9	366
8	358
7	350
6	341
5	332
4	323
3	314
2	
1	
G	



PULLMAN HOUSE



1 BEDROOM APARTMENT

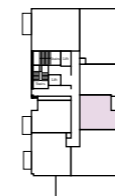


Levels 16 to 20

- Living/Kitchen/Dining**
9'11" x 11'8" (3013 x 3568mm)
- Bedroom**
12'7" x 8'2" (3848 x 2500mm)
- Bathroom**
8'2" x 5'1" (2500 x 1550mm)
- TOTAL AREA**
414 ft² (38 m²)
- Balcony**
11'5" x 5'1" (3478 x 1551mm)

Floor	Plot
20	450
19	443
18	436
17	429
16	422
15	
14	
13	
12	
11	
10	
9	
8	
7	
6	
5	
4	
3	
2	
1	
G	

1 BEDROOM APARTMENT



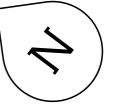
Level 15

- Living/Kitchen/Dining**
19'10" x 10'10" (6048 x 3314mm)
- Bedroom**
12'7" x 8'2" (3848 x 2500mm)
- Bathroom**
8'2" x 5'1" (2500 x 1550mm)
- TOTAL AREA**
414 ft² (37 m²)
- Terrace**
20'7" x 7'5" (6273 x 2255mm)

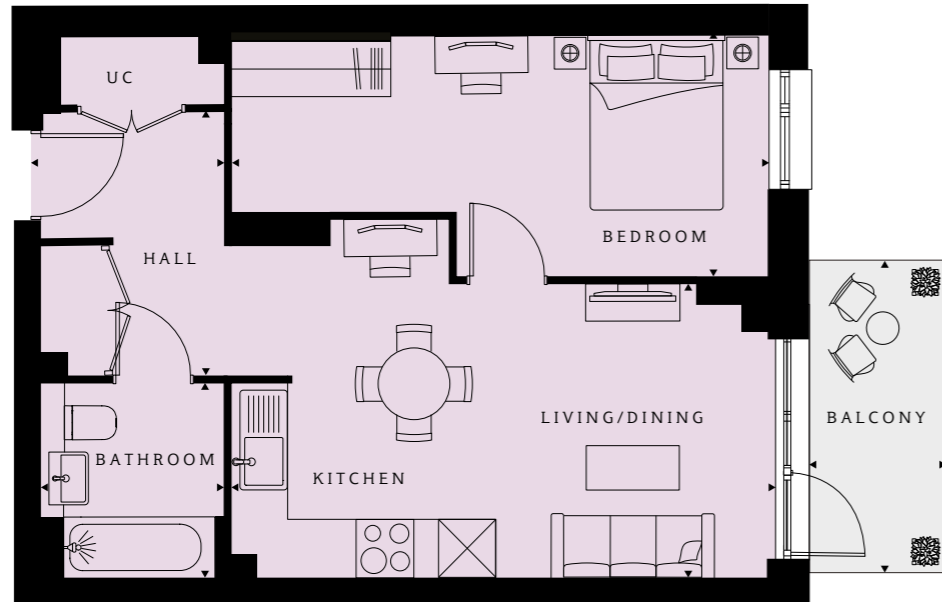
Floor	Plot
20	
19	
18	
17	
16	
15	415
14	
13	
12	
11	
10	
9	
8	
7	
6	
5	
4	
3	
2	
1	
G	



PULLMAN HOUSE



1 BEDROOM APARTMENT



Levels 7 to 12

Living/Kitchen/Dining
19'10" x 10'10" (6048 x 3314mm)

Bedroom
19'10" x 9'0" (6048 x 2754mm)

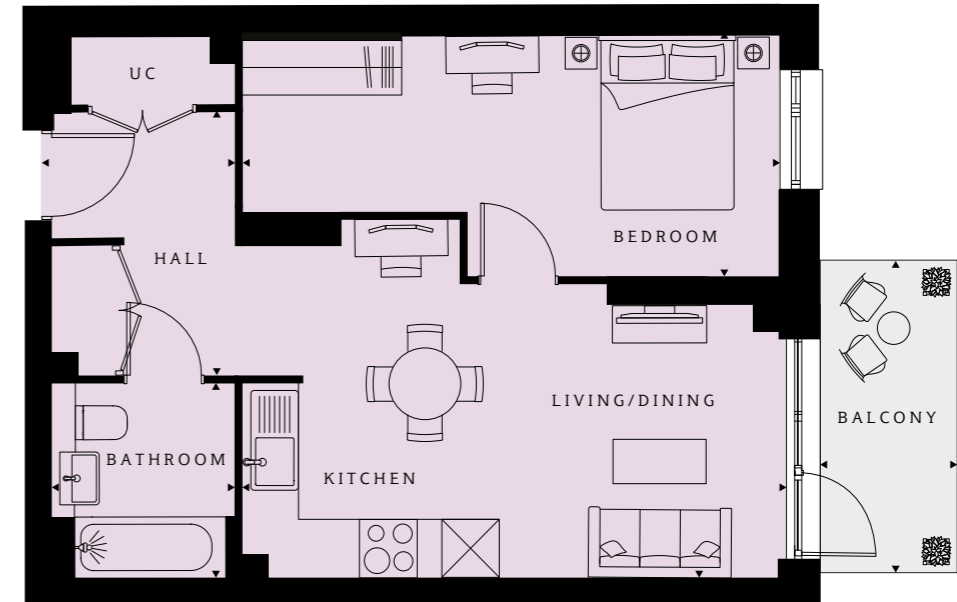
Bathroom
7'3" x 6'9" (2200 x 2050mm)

TOTAL AREA
541 ft² (50 m²)

Balcony
11'5" x 5'1" (3478 x 1550mm)

Floor	Plot
20	_____
19	_____
18	_____
17	_____
16	_____
15	_____
14	_____
13	_____
12	_____ 392
11	_____ 384
10	_____ 376
9	_____ 368
8	_____ 360
7	_____ 352
6	_____
5	_____
4	_____
3	_____
2	_____
1	_____
G	_____

1 BEDROOM APARTMENT



Levels 13 to 14

Living/Kitchen/Dining
19'10" x 10'10" (6048 x 3314mm)

Bedroom
19'10" x 9'0" (6048 x 2754mm)

Bathroom
7'3" x 6'9" (2200 x 2058mm)

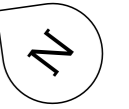
TOTAL AREA
541 ft² (50 m²)

Balcony
11'5" x 5'1" (3478 x 1550mm)

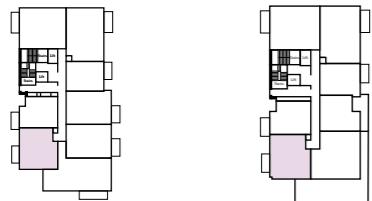
Floor	Plot
20	_____
19	_____
18	_____
17	_____
16	_____
15	_____
14	_____ 408
13	_____ 400
12	_____
11	_____
10	_____
9	_____
8	_____
7	_____
6	_____
5	_____
4	_____
3	_____
2	_____
1	_____
G	_____



PULLMAN HOUSE



1 BEDROOM APARTMENT



Levels 7 to 14

Level 15

Living/Kitchen/Dining
12'10" x 15'4" (3923 x 4677mm)

Bedroom
11'8" x 10'8" (3553 x 3262mm)

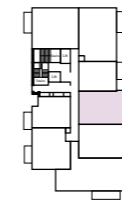
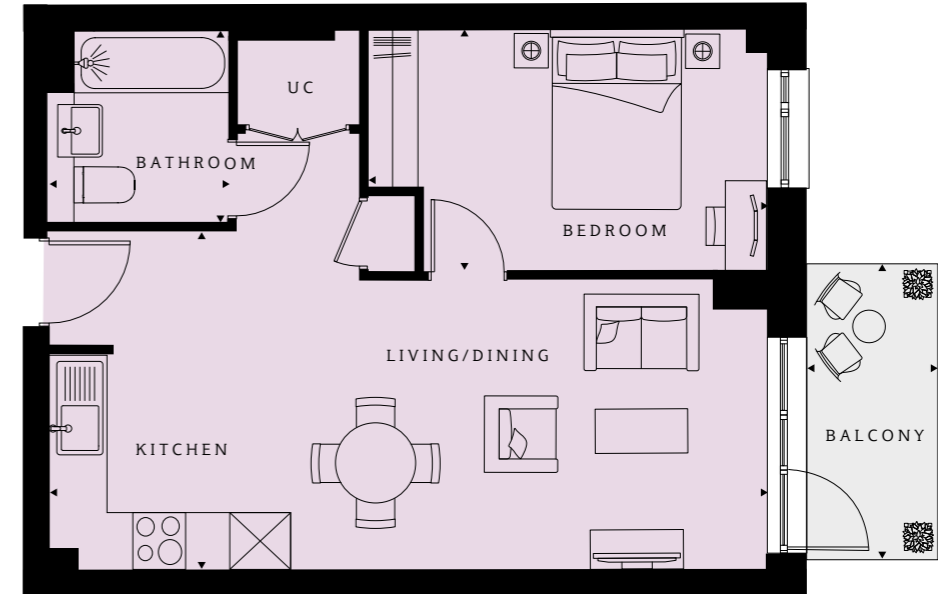
Bathroom
7'3" x 6'9" (2200 x 2050mm)

TOTAL AREA
538ft² (50m²)

Balcony
11'5" x 5'1" (3478 x 1550mm)

Floor	Plot
20	_____
19	_____
18	_____
17	_____
16	_____
15	_____ 416
14	_____ 409
13	_____ 401
12	_____ 393
11	_____ 385
10	_____ 377
9	_____ 369
8	_____ 361
7	_____ 353
6	_____
5	_____
4	_____
3	_____
2	_____
1	_____
G	_____

1 BEDROOM APARTMENT



Levels 8 to 12

Living/Kitchen/Dining
19'10" x 10'10" (6048 x 3314mm)

Bedroom
19'10" x 9'0" (6048 x 2754mm)

Bathroom
7'3" x 6'9" (2200 x 2058mm)

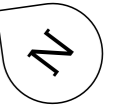
TOTAL AREA
543 ft² (50 m²)

Balcony
11'5" x 5'1" (3478 x 1550mm)

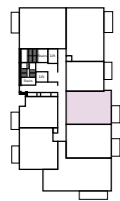
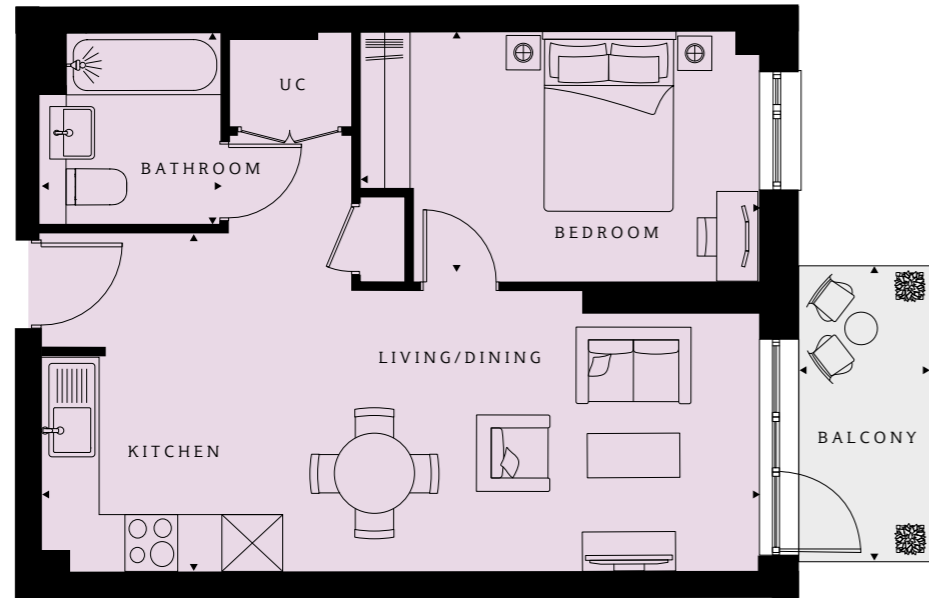
Floor	Plot
20	_____
19	_____
18	_____
17	_____
16	_____
15	_____
14	_____
13	_____
12	_____ 391
11	_____ 383
10	_____ 375
9	_____ 367
8	_____ 359
7	_____
6	_____
5	_____
4	_____
3	_____
2	_____
1	_____
G	_____



PULLMAN HOUSE



1 BEDROOM APARTMENT



Levels 13 & 14

Living/Kitchen/Dining
19'10" x 10'10" (6048 x 3314mm)

Bedroom
19'10" x 9'0" (6048 x 2754mm)

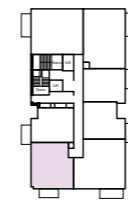
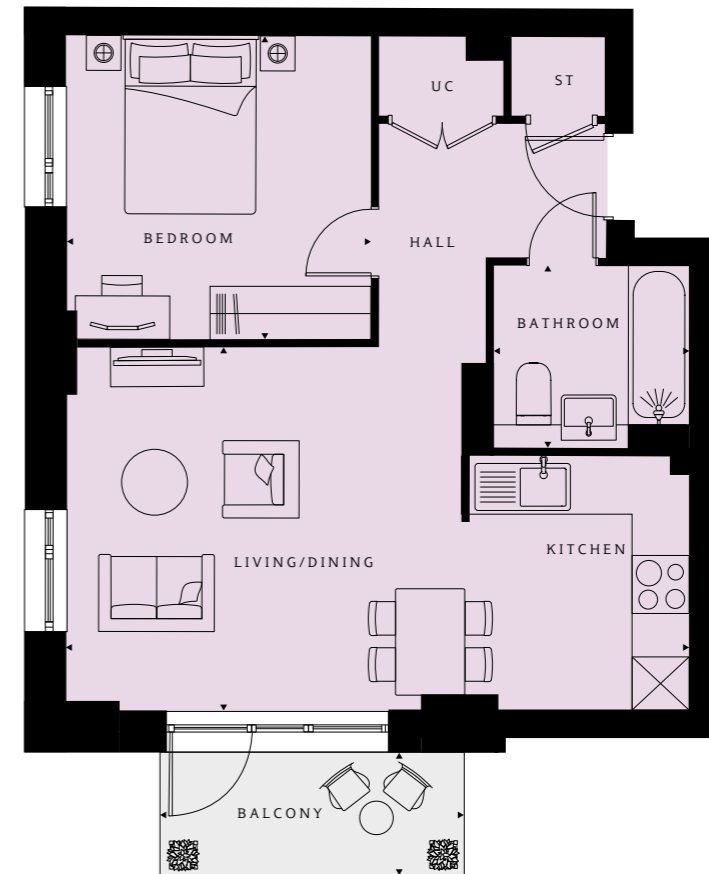
Bathroom
7'3" x 6'9" (2200 x 2058mm)

TOTAL AREA
537 ft² (50 m²)

Balcony
11'5" x 5'1" (3478 x 1550mm)

Floor	Plot
20	_____
19	_____
18	_____
17	_____
16	_____
15	_____
14	_____ 407
13	_____ 399
12	_____
11	_____
10	_____
9	_____
8	_____
7	_____
6	_____
5	_____
4	_____
3	_____
2	_____
1	_____
G	_____

1 BEDROOM APARTMENT



Levels 16 to 20

Living/Kitchen/Dining
12'10" x 15'4" (3923 x 4677mm)

Bedroom
11'8" x 10'8" (3553 x 3262mm)

Bathroom
7'3" x 6'9" (2200 x 2050mm)

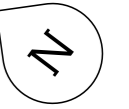
TOTAL AREA
538ft² (50m²)

Balcony
11'5" x 5'1" (3478 x 1550mm)

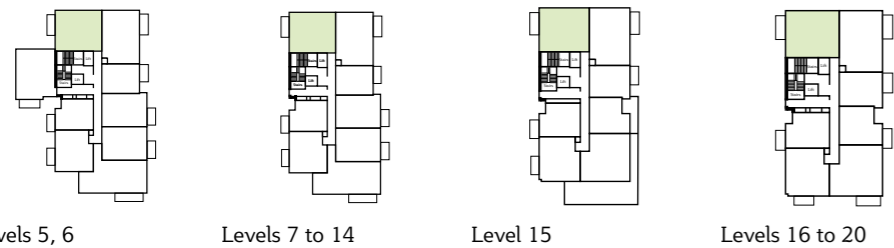
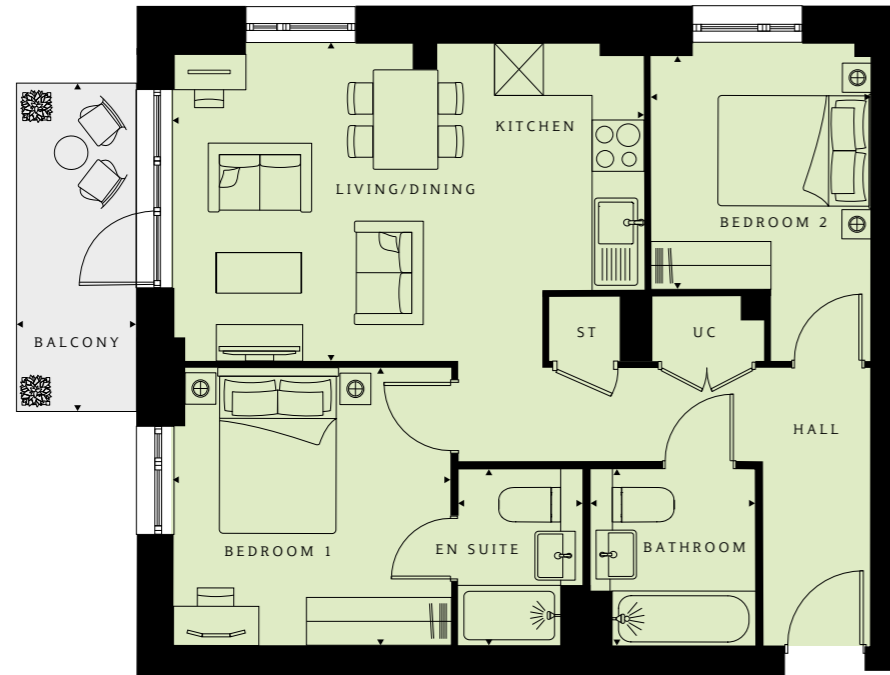
Floor	Plot
20	_____ 451
19	_____ 444
18	_____ 437
17	_____ 430
16	_____ 423
15	_____
14	_____
13	_____
12	_____
11	_____
10	_____
9	_____
8	_____
7	_____
6	_____
5	_____
4	_____
3	_____
2	_____
1	_____
G	_____



PULLMAN HOUSE



2 BEDROOM APARTMENT



Floor	Plot
20	453
19	446
18	439
17	432
16	425
15	418
14	410
13	402
12	394
11	386
10	378
9	370
8	362
7	354
6	346
5	337
4	
3	
2	
1	
G	

Living/Kitchen/Dining
13'6" x 12'11" (4118 x 3930mm)

Bedroom 1
11'3" x 11'3" (3432 x 3438mm)

En-Suite
7'3" x 5'1" (2205 x 1550mm)

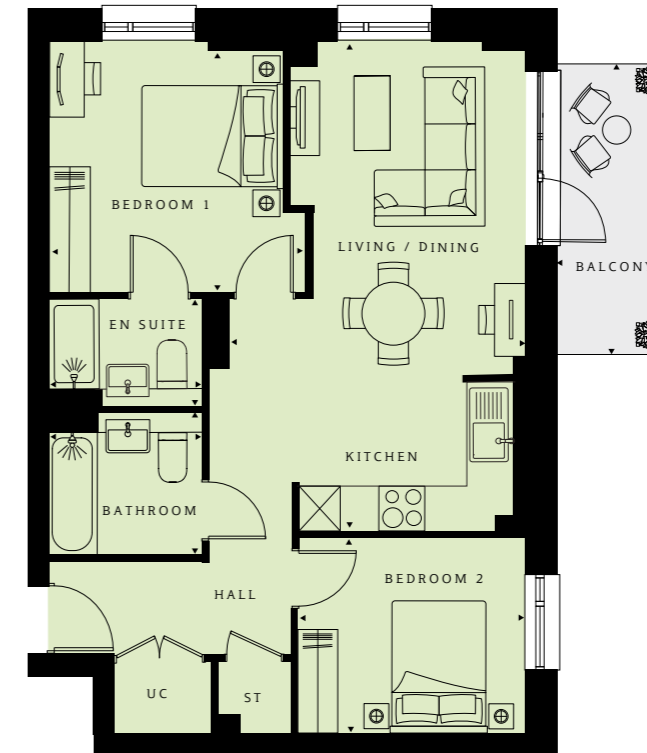
Bedroom 2
10'0" x 9'0" (3050 x 2745mm)

Bathroom
7'3" x 6'9" (2205 x 2050mm)

TOTAL AREA
692 ft² (64 m²)

Balcony
13'8" x 5'1" (4153 x 1550mm)

2 BEDROOM APARTMENT



Floor	Plot
20	454
19	447
18	440
17	433
16	426
15	419
14	411
13	403
12	395
11	387
10	379
9	371
8	363
7	355
6	347
5	338
4	
3	
2	
1	
G	

Living/Kitchen/Dining
16'2" x 11'2" (4930 x 3394mm)

Bedroom 1
11'0" x 11'10" (3354 x 3615mm)

En-Suite
7'3" x 5'1" (2200 x 1550mm)

Bedroom 2
9'1" x 10'9" (2777 x 3268mm)

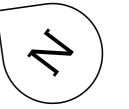
Bathroom
7'3" x 6'9" (2200 x 2050mm)

TOTAL AREA
719ft² (67m²)

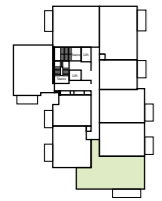
Balcony
13'8" x 5'1" (4153 x 1550mm)



PULLMAN HOUSE



2 BEDROOM APARTMENT



Levels 5, 6



Levels 7 to 14

Living/Kitchen/Dining
19'4" x 13'0" (5892 x 3951mm)

Bedroom 1
12'8" x 11'3" (3863 x 3423mm)

En suite
7'3" x 5'1" (2200 x 1550mm)

Bedroom 2
8'2" x 10'11" (2500 x 3324mm)

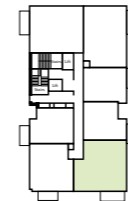
Bathroom
7'3" x 6'9" (2200 x 2050mm)

TOTAL AREA
781 ft² (73 m²)

Balcony
18'1" x 5'1" (5503 x 1550mm)

Floor	Plot
20	
19	
18	
17	
16	
15	
14	412
13	404
12	396
11	388
10	380
9	372
8	364
7	356
6	348
5	339
4	
3	
2	
1	
G	

2 BEDROOM APARTMENT



Levels 16 to 20

Living/Kitchen/Dining
14'11" x 10'0" (4557 x 3041mm)

Bedroom 1
11'8" x 12'1" (3558 x 3695mm)

En-Suite
7'3" x 5'1" (2200 x 1550mm)

Bedroom 2
7'10" x 10'7" (2390 x 3225mm)

Bathroom
7'3" x 6'9" (2200 x 2050mm)

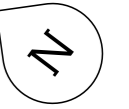
TOTAL AREA
689ft² (64 m²)

Balcony
13'8" x 5'1" (4153 x 1550mm)

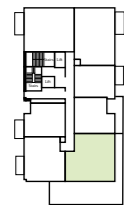
Floor	Plot
20	452
19	445
18	438
17	431
16	424
15	
14	
13	
12	
11	
10	
9	
8	
7	
6	
5	
4	
3	
2	
1	
G	



PULLMAN HOUSE



2 BEDROOM APARTMENT



Level 15

Living/Kitchen/Dining
14'11" x 10'0" (4557x 3041mm)

Bedroom 1
11'8" x 12'1" (3558 x 3695mm)

En-Suite
7'3" x 5'1" (2200 x 1550mm)

Bedroom 2
7'10" x 10'7" (2390 x 3225mm)

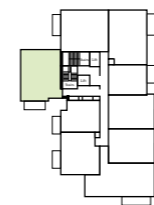
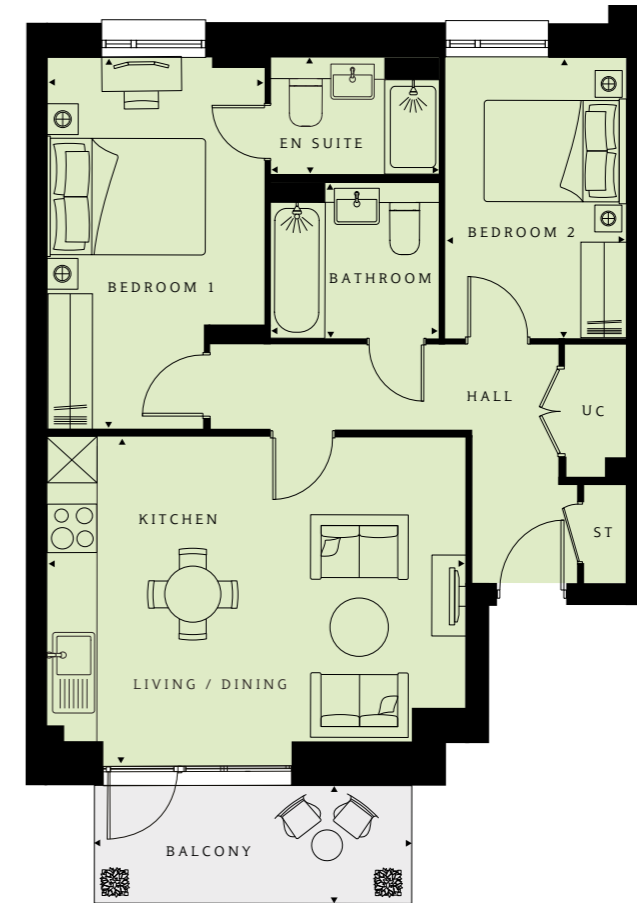
Bathroom
7'3" x 6'9" (2200 x 2050mm)

TOTAL AREA
689ft² (64 m²)

Terrace
40'7" x 39'4" (12363 x 11987mm)

Floor	Plot
20	
19	
18	
17	
16	
15	417
14	
13	
12	
11	
10	
9	
8	
7	
6	
5	
4	
3	
2	
1	
G	

2 BEDROOM APARTMENT



Levels 5, 6

Living/Kitchen/Dining
14'4" x 18'0" (4368x 5493mm)

Bedroom 1
15'9" x 9'3" (4810 x 2825mm)

En-Suite
7'3" x 5'1" (2200 x 1550mm)

Bedroom 2
12'1" x 7'11" (3680 x 2407mm)

Bathroom
7'3" x 6'9" (2200 x 2050mm)

TOTAL AREA
692ft² (64m²)

Balcony
13'8" x 5'1" (4153 x 1550mm)

Floor	Plot
20	
19	
18	
17	
16	
15	
14	
13	
12	
11	
10	
9	
8	
7	
6	345
5	336
4	
3	
2	
1	
G	





APARTMENT SPECIFICATION

KITCHEN

Individually designed handleless-style kitchens with soft-close doors and drawers
Colour choice of wall and base units*
Matching worktops and full-height upstands
Under-cabinet lighting
Stainless steel single bowl sink and chrome tap
Fully integrated appliances including single oven, ceramic hob, dishwasher, fridge freezer and extractor

BATHROOM

White semi-recessed hand basin
Back-to-wall WC with soft-close seat
Concealed cistern and dual flushplate
White acrylic bath
Bath screen and shower above bath
Heated towel rail
Shaver socket
Ceramic floor and wall tiles

EN SUITE

White semi-recessed hand basin
Back-to-wall WC with soft-close seat
Concealed cistern and dual flushplate
White shower tray
Chrome shower doors
Heated towel rail
Shaver socket
Ceramic floor and wall tiles

BEDROOMS

BT TV/FM connectivity to main bedroom

GENERAL

Flooring included throughout
Spotlights in kitchen and bathroom(s)
Pendant lighting in hallway, living area and bedrooms
Video door entry
BT TV/Sky Q/FM connectivity to living area
Fibre broadband connectivity
12-hour concierge service

*Subject to build stage





ADDITIONAL INFORMATION

ADDRESS

Brook Avenue, Wembley, London HA9 8PW

Local authority

London Borough of Brent

ESTIMATED CHARGES

Estimated service charge per annum

1-bedroom: £1,358 - £1,835

2-bedroom: £2,329 - £2,592

MISCELLANEOUS

Building Warranty

2 years fixtures and fittings

10 year NHBC**

Length of lease

999 years

Reservation deposit

£1,000†

Terms of payment

10% of purchase price payable on exchange.

Balance of purchase price to be paid on completion

FOR ENQUIRIES PLEASE CONTACT:

Q INVESTMENTS INTERNATIONAL LTD

Tel: +447985487333

Email: office@qinvestments.london

<https://qinvestments.london>

WEMBLEY