

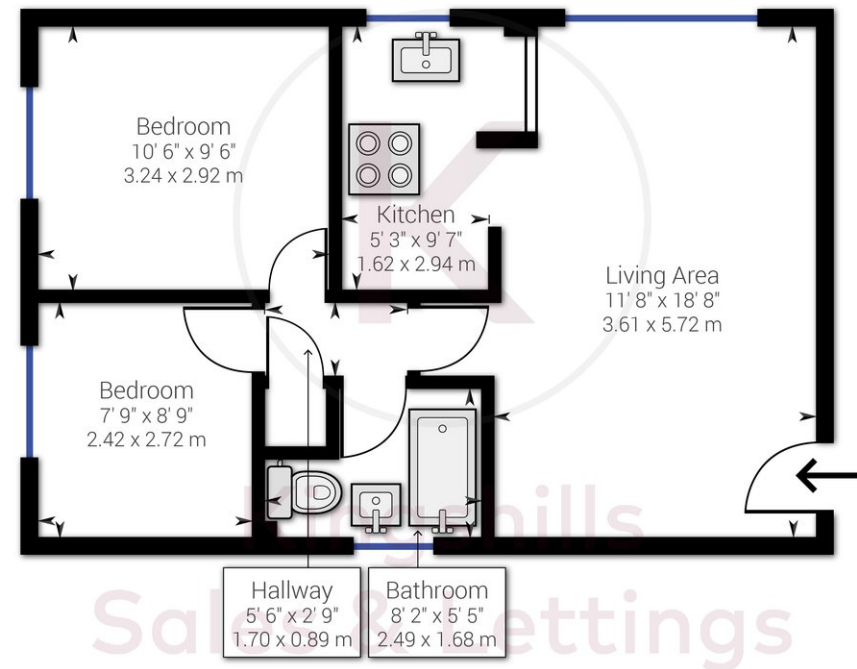


Property Description

A well-presented apartment located in the sought-after village of Penn, within a short walk to local amenities and Penn common. The apartment offers light and airy accommodation and benefits from the use of a garage. The property features a large living area; kitchen with appliances; a large double bedroom with built-in wardrobes; 2nd double bedroom and bathroom. Ashley Court offers well-maintained communal gardens and residents parking behind gates. Available from 12th August 2023.

COUNCIL TAX C

EPC RATING D



Approximate net internal area: 526.97 ft² / 48.96 m²
While every attempt has been made to ensure accuracy, all measurements are approximate, not to scale. This floor plan is for illustrative purpose only and should be used as such by any prospective tenant or purchaser.

Powered by Giraffe360

Kingshills Estate Agents
Comet Studios
Amersham
Buckinghamshire
HP7 0PX

01494 939868
hello@kingshills.co.uk
kingshills.co.uk

Agents Note: Whilst every care has been taken to prepare these particulars, they are for guidance purposes only. All measurements are for general guidance purposes only and whilst every care has been taken to ensure accuracy, they should not be relied upon and potential buyers/tenants are advised to recheck the measurements