

To Let



pocock & shaw
Residential sales, lettings & management



Milford Street, Cambridge, CB1 2LP

£1,495 pcm Unfurnished

1 Bedrooms

Available from 14/11/2023

EPC rating: D

2 Dukes Court, 54-62 Newmarket Road, Cambridge, CB5 8DZ

www.pocock.co.uk

01223 322552



1 Beaconsfield House Milford Street
Cambridge
CB1 2LP

Ground floor one bedroom flat in central location with allocated parking. In excellent condition. Walking distance to the Grafton centre, city centre and rail station. Offered unfurnished. One parking space.

- One bedroom ground floor flat
- Offered in excellent condition.
- Unfurnished
- Allocated parking for 1 car.
- Close to rail station
- Deposit: £1725.00
- EPC - D

Rent: £1,495 pcm

Viewing by appointment

Ground floor one bedroom flat in central location with allocated parking. In excellent condition. Walking distance to the Grafton centre, city centre and rail station. Offered unfurnished. One parking space.

Beaconsfield House is located on the corner of Milford Street and Gwydir Street and is with walking distance of the city centre, Grafton centre, Mill Road and rail station. This is very popular location and this flat benefits from having its own parking.

LIVING ROOM 15'5" x 9'10" (4.70 m x 3.00 m) Dual aspect room with access to the kitchen.

KITCHEN 9'10" x 5'7" (3.00 m x 1.70 m) Ceramic hob, electric oven and extractor, slim dishwasher, washer dryer and fridge freezer.

BEDROOM 11'6" x 8'2" (3.50 m x 2.50 m) Double room with cupboard.

BATHROOM 7'3" x 5'3" (2.20 m x 1.60 m) Shower over the bath, basin, WC, wall mounted bathroom cabinet with 'shaver socket' inside and in built light. Wall mounted heated towel rail.

Entrance hall has a cupboard housing the hot water tank and an entry phone.

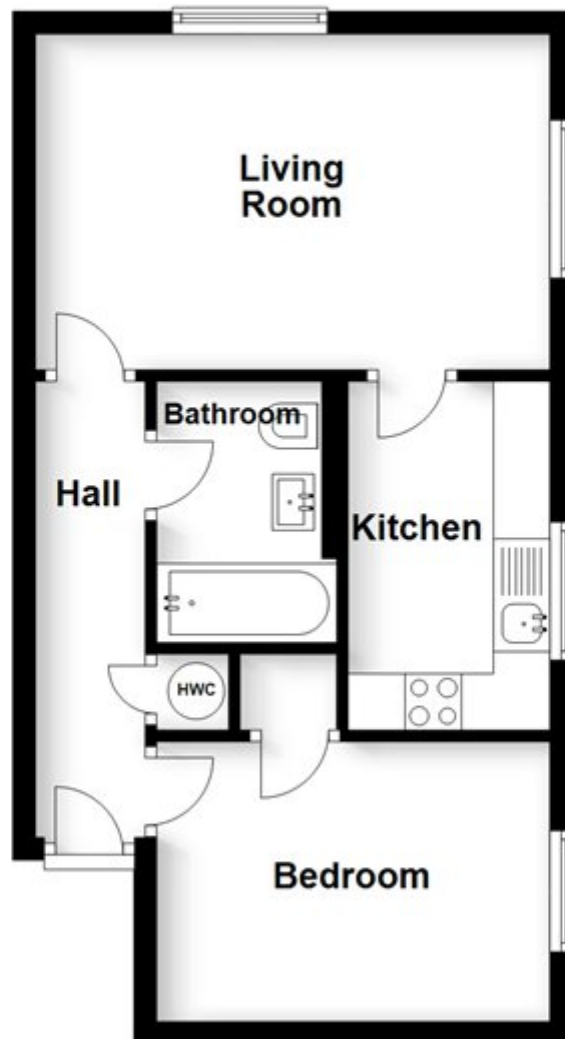
Council Tax Band: B

Energy Efficiency Rating

	Current	Potential
<i>Very energy efficient - lower running costs</i>		
(92-100) A		
(81-91) B		
(69-80) C		77
(55-68) D	63	
(39-54) E		
(21-38) F		
(1-20) G		
<i>Not energy efficient - higher running costs</i>		

Ground Floor

Approx. 38.2 sq. metres (410.7 sq. feet)



Applying for a Property

British or Irish Citizens must evidence their right to rent from the documents listed below.

Either:

- a British passport (current or expired)
- an Irish passport or passport card (current or expired)
- a certificate of registration or naturalisation as a British citizen

OR

Two of the following:

- a current UK driving licence (full or provisional)
- a full birth or adoption certificate from the UK, Guernsey, Jersey, the Isle of Man or Ireland
- a letter from your employer
- a letter from a British passport holder in an accepted profession
- a letter from a UK government department or local council
- proof that you currently receive benefits
- a letter from a British school, college, or university that you currently go to
- a Disclosure and Barring Service (DBS) certificate
- proof that you have served in the UK armed forces
- a letter from a private rented sector access scheme or a voluntary organisation assisting you with housing
- a letter confirming you have been released from prison within the past 6 months
- a letter confirming you are on probation from your offender manager
- a letter from the UK police about the theft of your passport

Non British or Irish Citizens will need to obtain a share code and including the following documentation to indicate the named person may stay in the UK. <https://www.gov.uk/prove-right-to-rent/get-a-share-code-online>

Either:

- a passport
- a travel document issued by the Home Office
- an immigration status document sent to you when you were given permission to stay in the UK

All of the above must include a Home Office endorsement. For example, a stamp or a vignette (sticker) inside. This must say you have one of the following

- indefinite leave to enter or indefinite leave to remain in the UK
- no time limit to your stay in the UK
- a certificate of entitlement to the right of abode
- exemption from immigration control
- limited leave to enter or limited leave to remain in the UK, or permission to stay for a time limited period - this must cover the time you'll be renting
- a certificate of entitlement to readmission to the UK

These checks need to be followed up either 12 months from the date of the previous check, or before the expiry of the person's right to live in the UK. Copies of these documents are kept and will also be sent to our reference company so they can be verified

Important

All applications and negotiations are subject to contract, successful referencing and landlord approval. The payment of the initial monies will be deemed as acceptance of these terms.

Deposit held during the tenancy:

The security deposit of no more than the equivalent of 5 weeks' rent (or 6 weeks' for a property with a rent of over £50,000 per year), is held during the tenancy and this, together with the initial rent payment, is to be received by Pocock & Shaw before the tenancy can commence.

Other costs a tenant may incur

In addition to the deposit and rent, a tenant may potentially be charged for the following when required:

1. A holding deposit of no more than one weeks' rent;
2. A default fee for late payment of rent (after 14 days);
3. Reasonable charges for lost keys or security fobs;
4. Costs associated with contract variation when requested by the tenant, at £50, or reasonable costs incurred if higher.
5. Costs associated with early termination of the tenancy, when requested by the tenant; and
6. Costs in respect of bills - utilities, communication services, TV licence, council tax and green deal or other energy efficiency charges.