



16 Grimms Meadow, Walters Ash, High Wycombe, Buckinghamshire, HP14 4UH

Asking Price | £600,000

Property Features

- Detached Family Home
- 3 Bedrooms
- Quiet Cul de Sac Location
- Double Aspect Lounge
- Stylish Kitchen
- Modern Family Bathroom
- Downstairs WC
- Garage
- Ample Driveway Parking
- EPC 70 C / Council Tax Band F

Full Description

This charming 3-bedroom detached house is nestled in the tranquil Walters Ash community of Buckinghamshire. Boasting modern amenities and ample space, this residence offers comfortable living in a serene setting.

As you step inside, you enter a welcoming hallway with a useful storage cupboard and convenient downstairs WC for added practicality. The spacious double aspect lounge exudes warmth and natural light. Large patio doors seamlessly connect the interior with the beautiful garden, inviting you to enjoy indoor-outdoor living and entertaining. The modern kitchen is equipped with ample storage and stylish worktops, offering a delightful space for preparing family meals.

Upstairs, you'll discover three well-appointed bedrooms, each offering peaceful retreats for relaxation and rest. The family bathroom, also modern in design, ensures comfort and convenience for all residents.

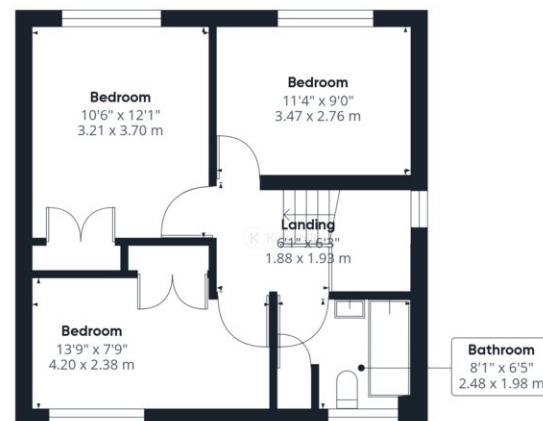
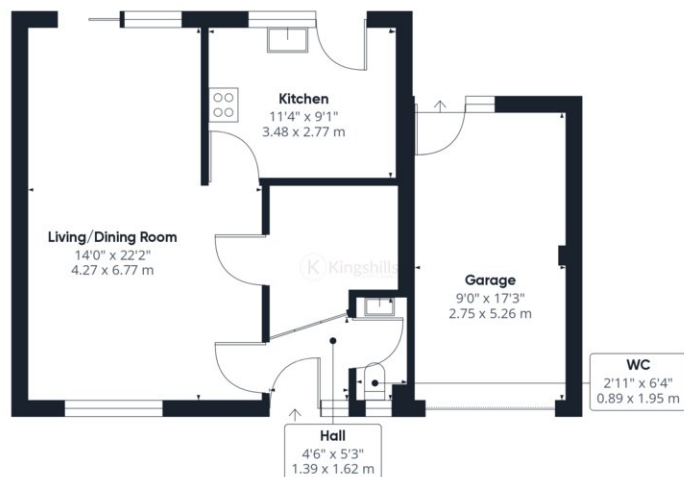
A garage and a driveway provide ample parking for several vehicles, catering to the needs of modern families.

In Walters Ash, there's a charming array of activities to suit various interests. Nature enthusiasts can explore the stunning surrounding countryside, with picturesque walking trails offering opportunities to immerse oneself in the tranquility of the Chiltern Hills. For those seeking cultural experiences, nearby attractions such as the Roald Dahl Museum provide insight into the beloved author's life and works. Additionally, the historic Hughenden Manor offers a glimpse into Victorian heritage and architecture. Step back in time with a visit to Hughenden Manor, a National Trust property that offers insights into Victorian life and the legacy of its famous resident, Prime Minister Benjamin Disraeli.

Just a stone's throw away, Princes Risborough offers an array of amenities including shops, restaurants, and cafes, providing everything you need for daily convenience. With its blend of outdoor adventures, cultural attractions, culinary delights and close proximity to the larger towns of Princes Risborough and High Wycombe, Walters Ash promises a delightful escape for residents and visitors alike.







Approximate total area⁽¹⁾

1031.26 ft²
95.81 m²

(1) Excluding balconies and terraces

While every attempt has been made to ensure accuracy, all measurements are approximate, not to scale. This floor plan is for illustrative purposes only.

GIRAFFE360