



4 Bedroom 3 bath Apartment / Flat,
Merchant Square, Edgware Road, Paddington, London W2

<https://qinvestments.london>



Fully Furnished 4 Bedroom Penthouse with a Roof Terrace to Rent in Merchant Square, Edgware Road, Paddington, London W2, close to Hyde Park and Oxford

- 1618 sq ft
- 3D Tour available
- Large Roof Terrace
- AC/comfort cooling
- Lift
- Luxury furniture and fully fitted kitchen
- Porter and building manager on site
- 24/7 emergency line

Merchant Square, Edgware Road, Paddington, London W2

Perched atop the fifteenth floor of a chic and contemporary edifice in the heart of Paddington, London W2, one discovers an opulent and fully furnished four-bedroom sky-home that exudes elegance and refinement. Spread across a sprawling 1618 square feet, this stunning abode comes complete with a large roof terrace that offers breathtaking views of the London skyline, ensuring that every moment spent here is nothing short of magical.

Boasting an open-plan reception room and kitchen, this apartment is the perfect place to relax and unwind with family and friends. The wood floors create a warm and inviting atmosphere, while the contemporary furnishings add a touch of sophistication to the space. Whether you're watching TV on the large sofa or enjoying a delicious meal at the modern four-seater dining table, this apartment is designed to meet your every need.

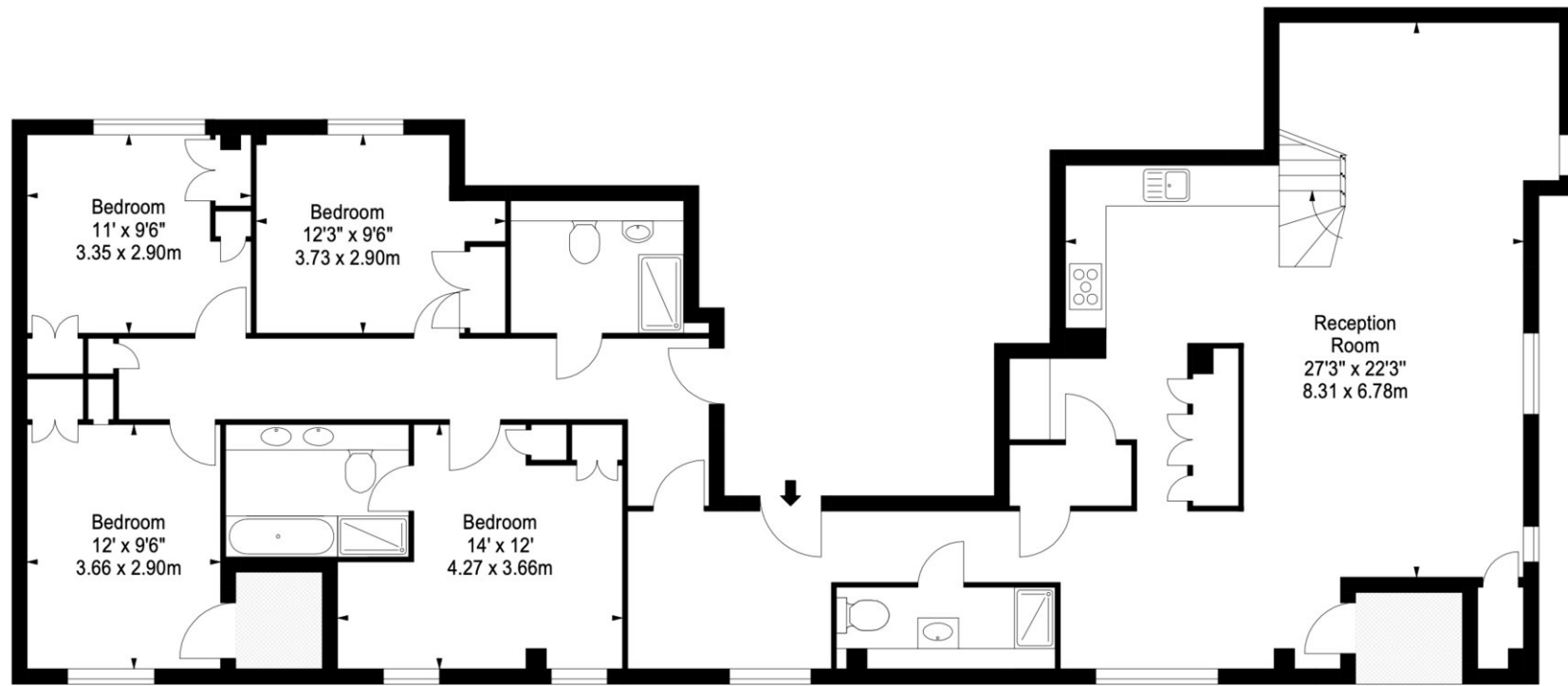
The fully fitted kitchen is equipped with all the latest appliances, making it perfect for cooking up a storm. From the sleek countertops to the stylish cabinetry, every inch of this kitchen exudes elegance and class. And with Wi-Fi and laptop-friendly surfaces available, working from home has never been more comfortable or convenient.

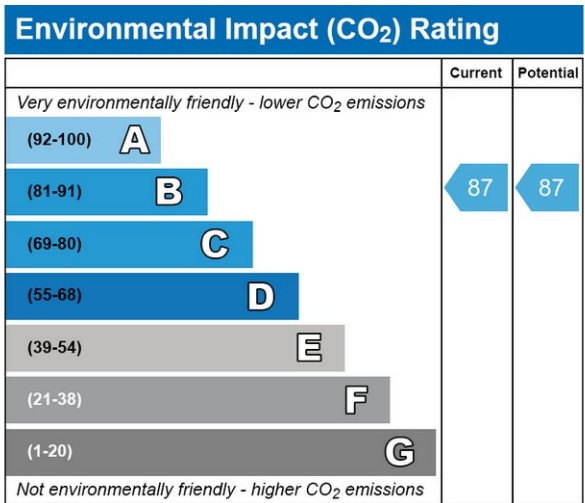
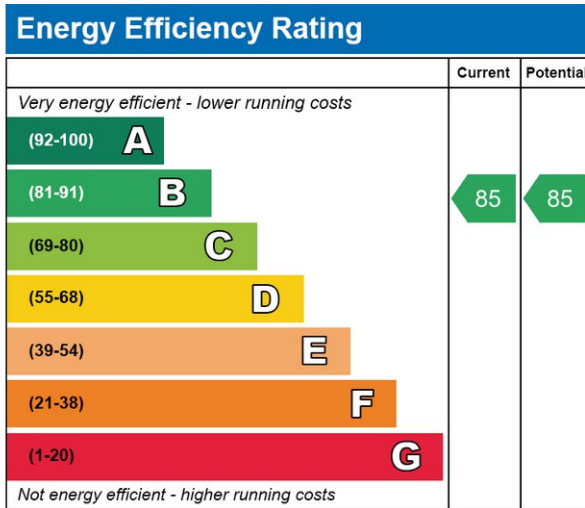
Situated in the vibrant and exclusive waterside development of Merchant Square, this apartment offers easy access to a host of amenities that cater to the needs of its residents. With a concierge service and round-the-clock security on site, you can rest assured that your safety and comfort are a top priority. And with the beautifully landscaped outdoor garden square, you have the perfect place to relax and soak up the sun.

In addition to the stunning outdoor spaces, this development also offers underground parking, making it incredibly convenient for those who own a car. And with a porter and building manager on site, you can rest assured that any issues that arise will be handled promptly and professionally.

The location of this penthouse is truly unbeatable. Located just a stone's throw away from shops, restaurants, and cafes, you will never run out of things to do or places to explore. And with easy access to buses and underground trains, getting around the city has never been easier.

But what really sets this apartment apart is its proximity to some of London's most famous landmarks. Just a five-minute walk away lies Oxford Street, one of the city's premier shopping destinations. And a short stroll through Hyde Park will take you to Kensington Palace, the official residence of the Duke and Duchess of Cambridge.





CONTACT US

Have a question for us? Please get in touch.

Q INVESTMENTS INTERNATIONAL LTD

T: +44 (0) 7985 487333

E: office@qinvestments.london

INVESTMENTS, REAL ESTATE & LIFESTYLE

Stay connected

Please visit our social media pages.

You can now find us on [Facebook](#), [Twitter](#), [Linkedin](#) and [Instagram](#) and many more!