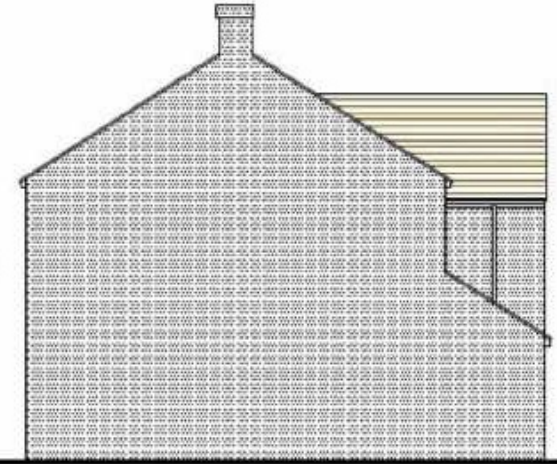




SOUTH EAST ELEVATION



NORTH WEST ELEVATION 1:100



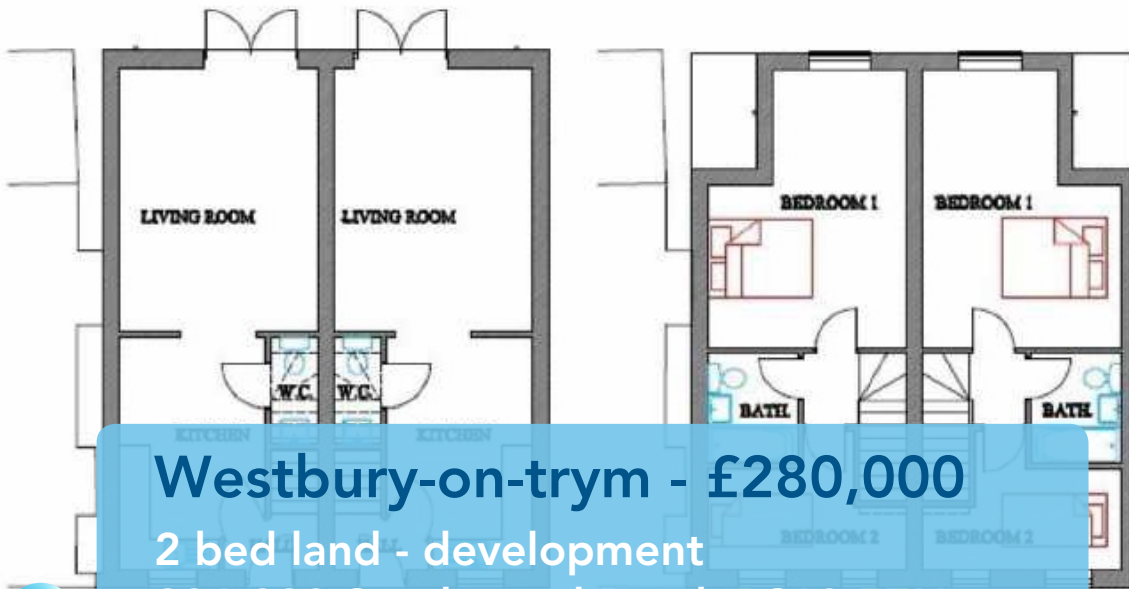
SOUTH WEST ELEVATION

concrete interlocking tiles

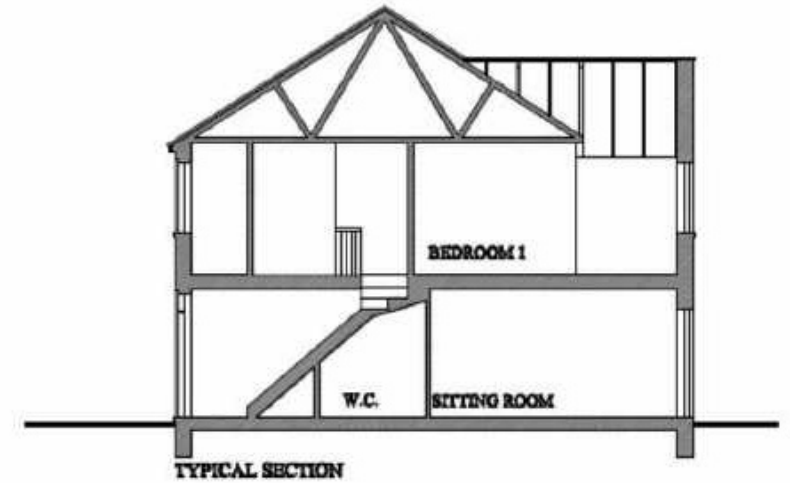
upvc fascias & r/c goods

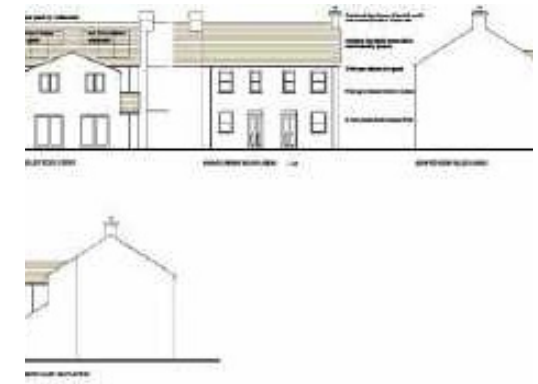
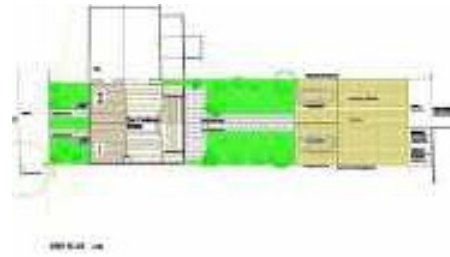
upvc framed windows & doors

render finish to walls



Westbury-on-trym - £280,000
2 bed land - development
296-298 Southmead Road, BS10 5EN





Ocean Westbury on Trym are delighted to offer this development site in an enviable position ideal for Southmead Hospital, Westbury on Trym Village and Henleaze Road shops.

Planning permission 18/04666/F granted 25.1.2019. Classed as an active site. The site is for two x two bedrooms houses with rear access & parking.

Viewings are direct with Ocean and by appointment only.



Westbury on Trym Office

73 Westbury Hill, Westbury-on-Trym,
Bristol, BS9 3AD

Call: 0117 9621973

Mail: westburysales@oceanhome.co.uk

Search: oceanhome.co.uk

References to the Tenure of a Property are based on information supplied by the Seller. The Agent has not had sight of the title documents. Lease details, service ground rent (where applicable) are given as a guide only and should be checked and confirmed by your solicitor prior to exchange of contracts.