



£175,000

At a glance...



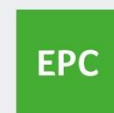
2



1



1



EPC

C



COUNCIL TAX

B

**holland
& odam**

15 Moonraker Square
Street
Somerset
BA16 0GB

TO VIEW

3 Farm Road, Street,
Somerset BA16 0BJ

01458 841411

street@hollandandodam.co.uk



Directions

From the town centre proceed in a westerly direction passing Living Homes on the right. Continue, passing Abbey Garage on the left take the next right into Bullmead Parade and right again into Lime Tree Square, turn left and then left again into Serenity Rise at the end turn right and continue to the end where Moonraker Square will be found on the left hand side. Use the entrance on the left hand.

Services

Mains electricity, water and drainage are connected.
Electric heating system.

Local Authority

Somerset Council
0300 1232224
somerset.gov.uk

Tenure

Leasehold
Length of Lease 155 years from 1st Jan 2014
Service/Maintenance Charges £1490.32 per annum
Ground Rent £250 per annum



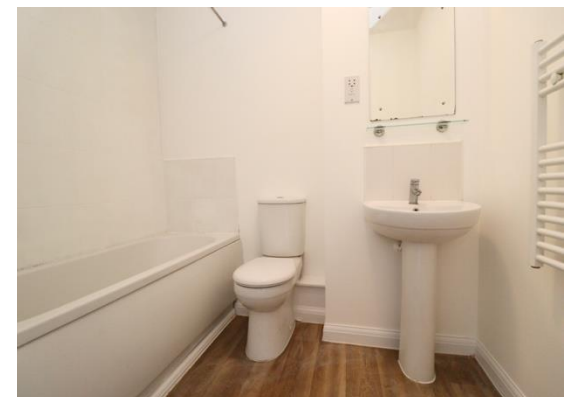
Location

The property is situated within walking distance of the town centre with its good range of shops, banks and cafes. Street also has an excellent range of sporting and recreational facilities including both indoor and open air swimming pools, tennis and bowls facilities and Strode Theatre. The historic town of Glastonbury is 2 miles and the Cathedral City of Wells 8 miles. The nearest M5 motorway interchange at Dunball (Junction 23) is 12 miles whilst Bristol, Bath, Taunton and Yeovil are all within commuting distance.

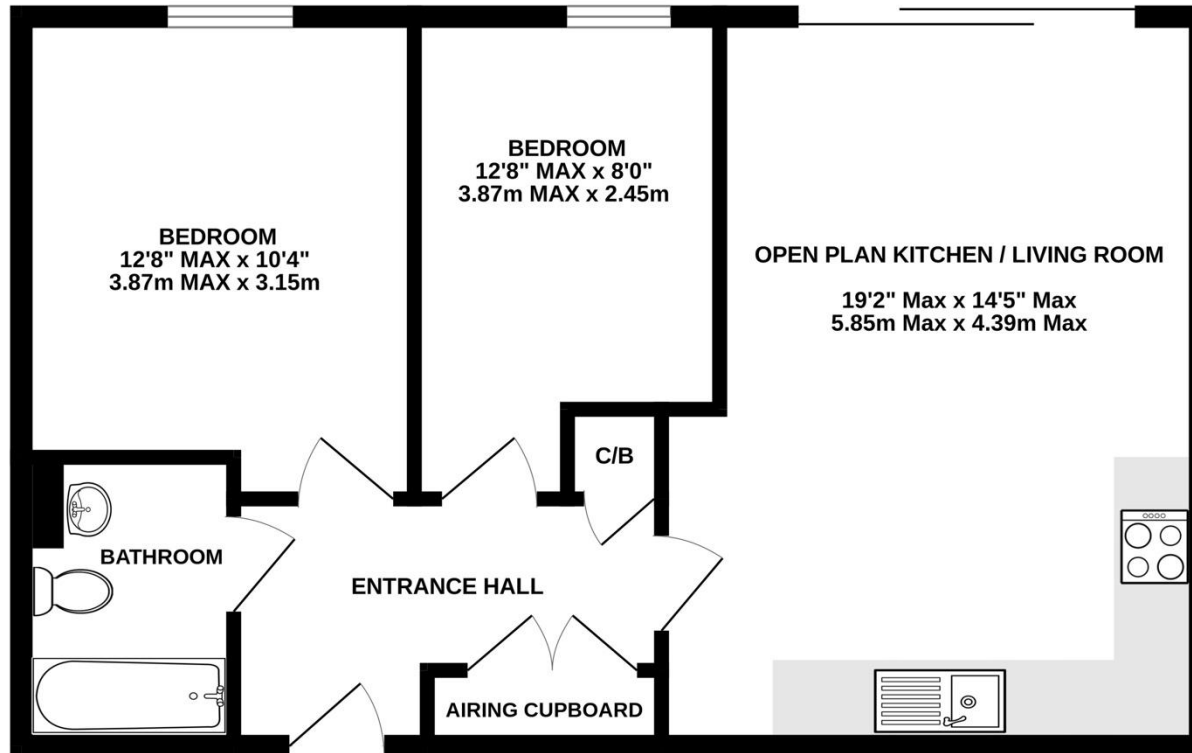
Insight

Available with no onward chain and vacant possession a two-bedroom executive style top floor apartment located on the popular Houndwood development. An ideal opportunity for professionals, first time buyers or buy to let investors.

- The open plan kitchen/living/dining room has a light and airy feel with a modern kitchen at one end and sliding doors opening to a Juliet balcony.
- Stylish well-appointed kitchen which has been fitted with a range of wall base and drawer units, worktop surface, built in oven and hob and space for washer/dryer and freestanding appliances.
- Two well-proportioned double bedrooms with floor to ceiling windows which floods the room with an abundance of natural light.
- Neatly presented bathroom which comprises bath with shower over, wash basin, WC and heated towel rail
- Spacious reception hallway housing a utility cupboard and a further good size airing cupboard.
- Outside there is designated parking for two vehicles. From the communal hall on the ground floor there is access to the bin/recycling store, bike store and post room.



GROUND FLOOR
593 sq.ft. (55.1 sq.m.) approx.



TOTAL FLOOR AREA : 593 sq.ft. (55.1 sq.m.) approx.

Whilst every attempt has been made to ensure the accuracy of the floorplan contained here, measurements of doors, windows, rooms and any other items are approximate and no responsibility is taken for any error, omission or mis-statement. This plan is for illustrative purposes only and should be used as such by any prospective purchaser. The services, systems and appliances shown have not been tested and no guarantee as to their operability or efficiency can be given.
Made with Metropix ©2024

DISCLAIMER

CONSUMER PROTECTION FROM UNFAIR TRADING REGULATIONS 2008. The Agent has not tested any apparatus, equipment, fixtures and fittings or services and so cannot verify that they are in working order or fit for the purpose. A Buyer is advised to obtain verification from their Solicitor or Surveyor. References to the Tenure of a Property are based on information supplied by the Seller. The Agent has not had sight of the

title documents. A Buyer is advised to obtain verification from their Solicitor. Items shown in photographs are not included unless specifically mentioned within the sales particulars. They may however be available by separate negotiation. Buyers must check the availability of any property and make an appointment to view before embarking on any journey to see a property.

DATA PROTECTION. Personal information provided by customers wishing to receive information and/or services from the estate agent and the Property Sharing Experts (of which it is a member) for the purpose of providing services associated with the business of an estate agent but specifically excluding mailing or promotions by a third party. If you do not wish your personal information to be used for any of these purposes, please notify us.