



Flat 12 Uplands House, Four Ashes Road, Cryers Hill, High Wycombe, HP15 6DY

Asking Price | £1,800

Property Features

- Two Bedroom Apartment
- Grade II Listed Building
- Open Plan Living Room/Kitchen
- Modern Bathroom
- Two Double Bedrooms
- En-Suite Shower Room
- Set within 18 acres of Landscaped Grounds
- Allocated Parking Set within Secure Gates
- Unfurnished/Furnished
- Available End of March

Full Description

Set within 18 acres of stunning landscaped grounds, the Uplands House Development consists of a historic Victorian Country House which was originally built over 150 years ago.

This wonderful two-bedroom executive ground floor apartment is situated within the modern section of this Grade II Listed development and is nestled in an idyllic area of natural beauty in Four Ashes, High Wycombe. The apartment boasts a thoughtfully designed layout, offering an open plan kitchen/lounge/dining room with high specification Italian designed kitchen and bespoke Italian family bathrooms. The apartment boasts two good sized bedrooms, both with large windows overlooking the green to the front. The high specification bathrooms are of Italian design. The fully fitted modern kitchen features quartz worktops and ample cupboard and plenty of room for a dining table

This executive apartment is set behind security gates with CCTV and comes with allocated parking and access to the beautifully maintained 18 acres of landscaped communal grounds which include lawned areas and woodland pathways.

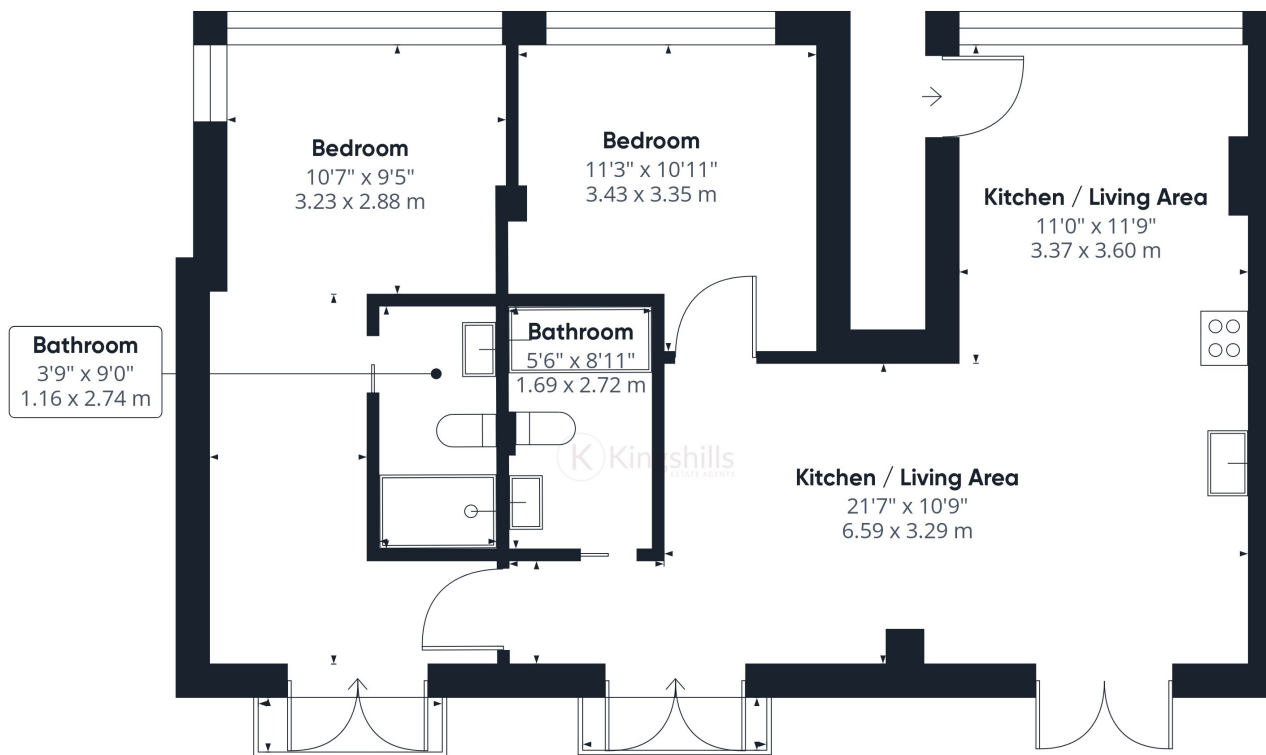
With its prime location, this property is perfect for those seeking a peaceful retreat while still being within easy reach of nearby amenities and transport links. Four Ashes is an area renowned for its natural beauty, with stunning countryside views and an abundance of outdoor activities to enjoy. Hughenden Valley is close by, where a visit to the historic National Trust's Hughenden Manor is a must see.

With its scenic surroundings and plethora of leisure activities, High Wycombe provides the perfect balance between rural living and modern conveniences. The property benefits from excellent transport links, with easy access to the M40 motorway, providing direct links to London and Oxford.

Featuring breathtaking views of the landscaped gardens and surrounding countryside from all rooms in the apartment, this distinctive two-bedroom residence offers an ideal setting to embrace the beauty of nature and its serene surroundings.







Approximate total area⁽¹⁾

790.64 ft²
73.45 m²

(1) Excluding balconies and terraces

While every attempt has been made to ensure accuracy, all measurements are approximate, not to scale. This floor plan is for illustrative purposes only.

GIRAFFE360