



Stuart Lodge, Stuart Road, High Wycombe, Buckinghamshire, HP13 6AG

Asking Price | £1,550

## Property Features

---

- A Brand New Luxury Development
- Two Bedroom Two Bathroom Apartment
- Stunning Kitchen & Bathroom
- Allocated Parking
- Electric Heating
- High Specification Throughout
- Within Walking Distance to High Wycombe Town Centre
- A Stones Throw From The Rye Park
- Kitchen Fitted with Dishwasher and Washing Machine

## Full Description

---

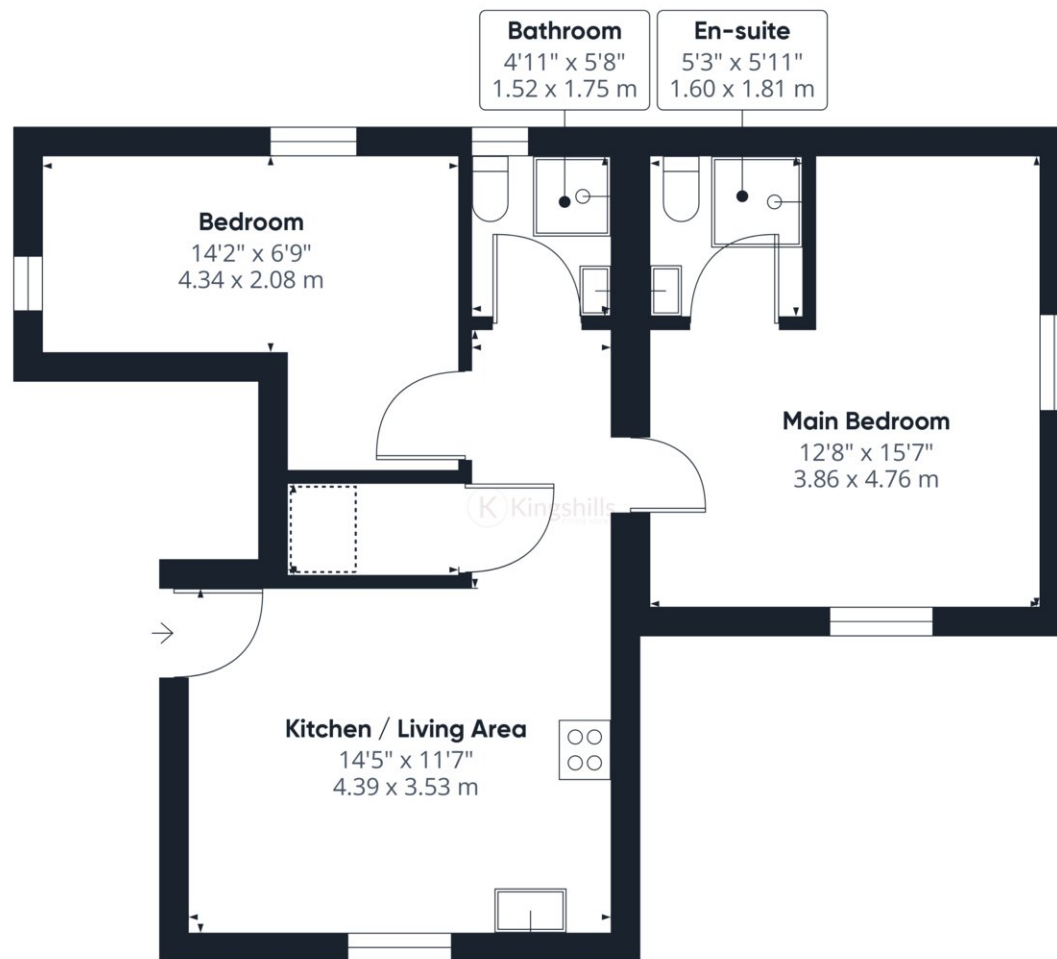
We are delighted to bring to the market a brand new two-bedroom, two-bathroom apartment which is within walking distance of High Wycombe town centre. Stuart Lodge offers the pinnacle of modern living within the heart of High Wycombe. Boasting a prime location just a leisurely stroll away from the vibrant town centre, this residence presents a unique opportunity to embrace a lifestyle of convenience and luxury. Also within a stone's throw is the popular Rye Park, which offers up 53 acres of open space, an outdoor pool, gym and café.

The apartment offers light and airy accommodation, with high ceilings and newly fitted sash windows. The apartment also features a stylish kitchen and two bathrooms. The kitchen is fully equipped with a washing machine and dishwasher. Externally there is parking for 1 car.

High Wycombe Town centre offers a abundance of shopping, dining, and entertainment options just a short walk away, creating an ideal setting for a vibrant urban lifestyle. The train connects High Wycombe to London Marylebone in just 24 minutes.







Approximate total area<sup>(1)</sup>

577.5 ft<sup>2</sup>  
53.65 m<sup>2</sup>

Reduced headroom

6.43 ft<sup>2</sup>  
0.6 m<sup>2</sup>

(1) Excluding balconies and terraces

 Reduced headroom  
(below 1.5m/4.92ft)

While every attempt has been made to ensure accuracy, all measurements are approximate, not to scale. This floor plan is for illustrative purposes only.

GIRAFFE360