



4 Bedroom 3 bath Terraced House,  
Montpelier Mews, Knightsbridge, London, SW7

<https://qinvestments.london>





## Luxurious Fully Furnished 4 Bedroom House to Rent in Knightsbridge, London SW7.

- Virtual walk through available
- Air Conditioning
- Elevator
- Terrace
- Big Windows
- High Ceilings
- Quiet Street

## Montpelier Mews, Knightsbridge, London, SW7

This sumptuous, fully-furnished four-bedroom residence is now available for rent in the prestigious enclave of Knightsbridge, London SW7. This contemporary gem boasts a capacious 1,539 sq ft of living space, with an impeccable interior design that's sure to take your breath away. From the moment you step into this modern marvel, you'll be immediately struck by the abundance of natural light that floods through the expansive windows, illuminating every corner of the house.

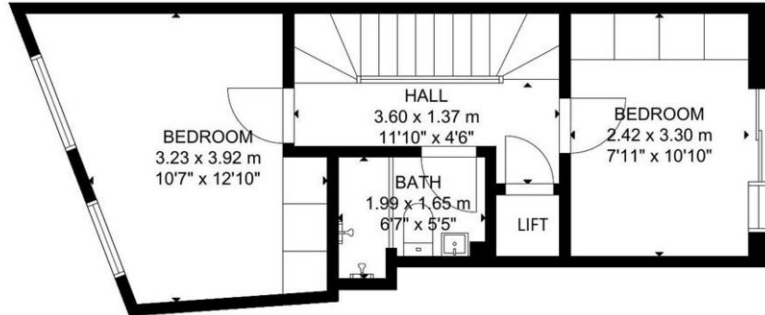
This masterpiece offers a rare opportunity to reside in one of London's most exclusive neighbourhoods, on a peaceful street that's the epitome of refinement and sophistication. The house itself has been masterfully crafted to offer the perfect balance of style and substance, with features such as high ceilings that create a sense of grandeur, and big windows that allow you to bask in the natural beauty of the outdoors. And, for those days when the weather is simply too hot to handle, you'll be grateful for the air conditioning, a rare luxury in London.

From the moment you step through the door, you'll be greeted by the luxurious and spacious living areas, which have been designed to cater to every need and desire. Whether you're looking to relax after a long day at work or entertain guests, this house has it all. The open-plan layout of the living areas seamlessly blends with the fully-fitted kitchen, which features a range of modern appliances including a washer/dryer and dishwasher, perfect for preparing delectable meals to impress your guests.

As you make your way through the house, you'll find four generously sized bedrooms, each designed with your comfort in mind. The bedrooms are thoughtfully positioned to ensure maximum privacy and tranquility, with ample storage space for all your belongings. The bathrooms are equally as impressive, boasting sleek fixtures and fittings, and high-end toiletries from prestigious brands such as Molton Brown.

One of the highlights of this luxurious residence is the private balcony, which offers breathtaking views of the surrounding neighbourhood, perfect for savouring a morning cup of coffee or a glass of wine in the evening. Additionally, the property also benefits from a spacious terrace, providing the perfect setting for al fresco dining or entertaining guests.

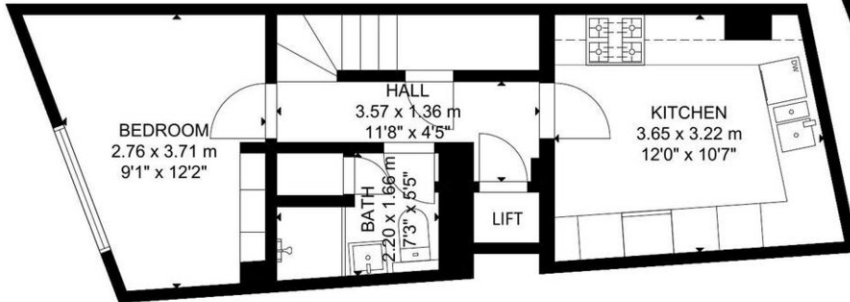
For your added convenience and security, the house also features an elevator, as well as a 24/7 concierge service and security, ensuring that you can always feel safe and secure in your new home.



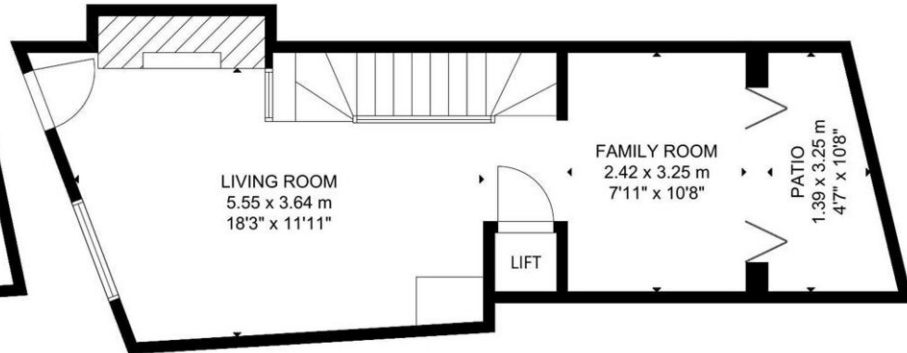
FIRST FLOOR



SECOND FLOOR

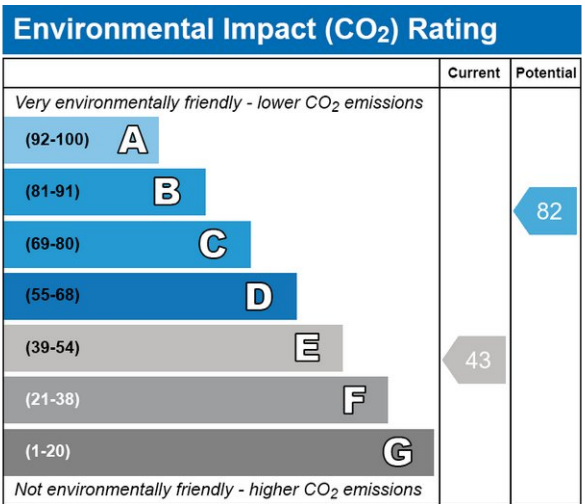
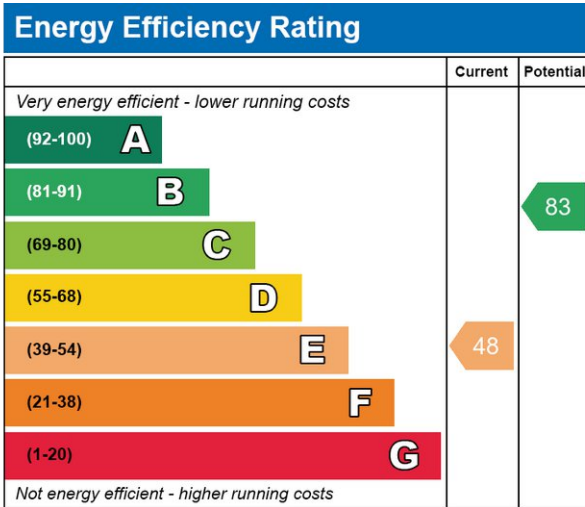


BASEMENT



GROUND FLOOR

GROSS INTERNAL AREA  
 TOTAL: 131 m<sup>2</sup>/1,401 sq ft  
 BASEMENT: 35 m<sup>2</sup>/372 sq ft, GROUND FLOOR: 34 m<sup>2</sup>/361 sq ft  
 FIRST FLOOR: 32 m<sup>2</sup>/345 sq ft, SECOND FLOOR: 30 m<sup>2</sup>/323 sq ft  
 EXCLUDED AREA: PATIO: 5 m<sup>2</sup>/49 sq ft  
 SIZE AND DIMENSIONS ARE APPROXIMATE, ACTUAL MAY VARY.



## **CONTACT US**

Have a question for us? Please get in touch.

## **Q INVESTMENTS INTERNATIONAL LTD**

T: +44 (0) 7985 487333

E: [office@qinvestments.london](mailto:office@qinvestments.london)

## **INVESTMENTS, REAL ESTATE & LIFESTYLE**

### **Stay connected**

Please visit our social media pages.

You can now find us on [Facebook](#), [Twitter](#), [Linkedin](#) and [Instagram](#) and many more!