



3 Birch House, The Old Works, Leigh Street, High Wycombe, HP11 2WP

50% Shared Ownership Price | £87,500

Property Features

- Urban Open Plan Apartment
- 50% Shared Ownership
- Converted Historic Victorian Building
- Prime Central Location
- Light & Bright Apartment with High Ceilings and Tall Windows
- Contemporary Kitchen with Integrated Appliances
- Modern Bathroom
- Walking Distance to the Train Station
- Underground Allocated Parking
- Awaiting EPC / Awaiting Council Tax Band

Full Description

This ground floor, shared ownership studio apartment is located within Birch House, part of The Old Works development where where history and modern living seamlessly blend together. Nestled in the heart of High Wycombe, The Old Works is a celebration of the town's rich heritage and its promising future. This exceptional boutique style development has breathed new life into a splendid Victorian building, originally dedicated to the craft of chair making – a practice that High Wycombe is historically famous for.

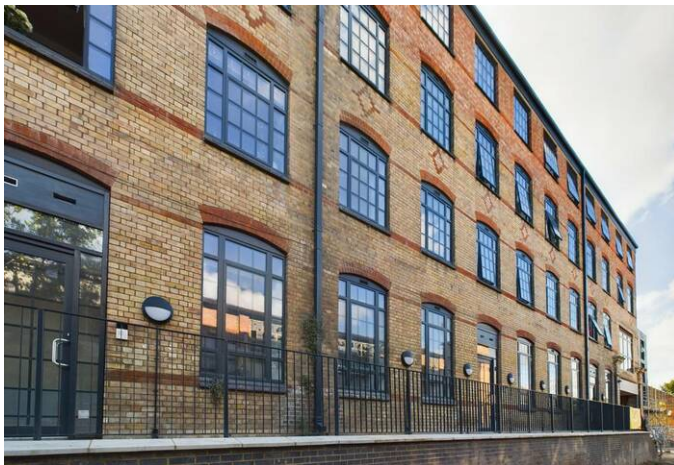
This urban open-plan ground floor studio apartment in Birch House maximizes the space within. As you step inside No 3, you'll immediately be captivated by the sense of openness and natural light that floods the space through a large industrial-style window. The living area is thoughtfully designed to provide ample space for relaxation and entertainment and maximises the light to the room with a neutral colour scheme and wooden flooring throughout. The kitchen in this open-plan studio features modern integrated appliances, sleek cabinetry and ample countertop space for meal preparation.

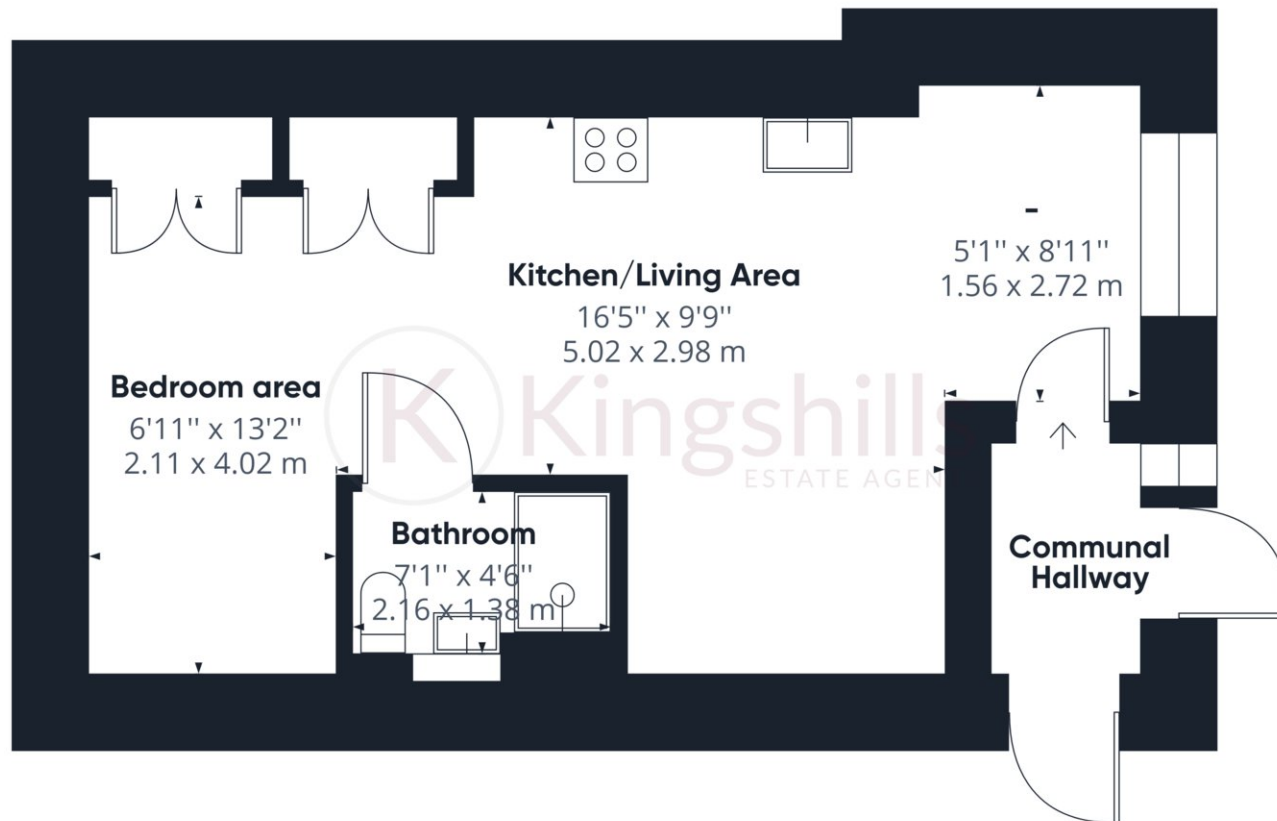
Adjacent to the lounge area, you'll find a well-appointed shower room that boasts modern fixtures and fittings with contemporary ceramic floor tiles. One of the most charming features of this studio is the tucked-away corner for the bed. This cosy sleeping nook provides a sense of privacy and separation from the main living area, making it the perfect retreat after a long day. There are also two custom-made fitted wardrobes which have been expertly integrated into the room's design, making the most of the available space.

50 % Shared Ownership Price £87,500 (full price £175,000)
Rent on The Remaining 50% Share £201 per month
Service Charge £1,098 per annum

Enjoying a prime location that perfectly complements urban living, The Old Works is situated within walking distance of High Wycombe's vibrant town centre where residents can easily access a plethora of shops, bars, and restaurants. Whether you crave a leisurely stroll, a shopping spree, or a night out on the town, everything you desire is right at your doorstep.







Approximate total area⁽¹⁾
405.73 ft²
37.69 m²

(1) Excluding balconies and terraces

While every attempt has been made to ensure accuracy, all measurements are approximate, not to scale. This floor plan is for illustrative purposes only.

GIRAFFE360