

To Let



pocock & shaw

Residential sales, lettings & management



Kings Hedges Road, Cambridge, CB4 2QD

£1,950 pcm Unfurnished

4 Bedrooms

Available from 16/10/2023

EPC rating: C

2 Dukes Court, 54-62 Newmarket Road, Cambridge, CB5 8DZ

www.pocock.co.uk

01223 322552



95 Kings Hedges Road
Cambridge
CB4 2QD

Surprisingly spacious four bedroom family home, with off street parking and enclosed rear garden with lawn, veg patch and sheds. Offered unfurnished. Not suitable for share groups. Pets considered on a case by case basis.

- Four bedroom home.
- Two bathrooms.
- Unfurnished.
- Off street parking.
- Garden with veg patches and sheds.
- Gas central heating.
- Pets considered on a case by case basis.
- Not suitable for share groups.
- Deposit: £2192.00

Rent: £1,950 pcm

Viewing by appointment

Located on the north side of the city, this four bedroom home is within easy reach of the Science Park, Cambridge North station and Cambridge Regional College.

Surprisingly spacious four bedroom family home, with off street parking and enclosed rear garden with lawn, veg patch and sheds. Offered unfurnished. Not suitable for share groups. Pets considered on a case by case basis.

Kitchen 12'6" x 5'5" (3.82 m x 1.65 m) Fitted with freestanding gas cooker, washing machine, slim dishwasher and fridge freezer standing just in the dining room. Access to garden.

Dining room 9'4" x 7'9" (2.85 m x 2.37 m) Dining area currently has a sideboard standing in it, but this can be removed if not wanted.

Living room 12'5" x 9'9" (3.79 m x 2.97 m) Living room with french doors accessing the garden.

Front bedroom 10'9" x 11'6" (3.28 m x 3.50 m) Good sized double bedroom.

Back bedroom 12'4" x 9'9" (3.75 m x 2.96 m) Double room with built in wardrobe.

Energy Efficiency Rating

	Current	Potential
Very energy efficient - lower running costs		
(92-100) A		
(81-91) B		
(69-80) C		81
(55-68) D	69	
(39-54) E		
(21-38) F		
(1-20) G		
Not energy efficient - higher running costs		

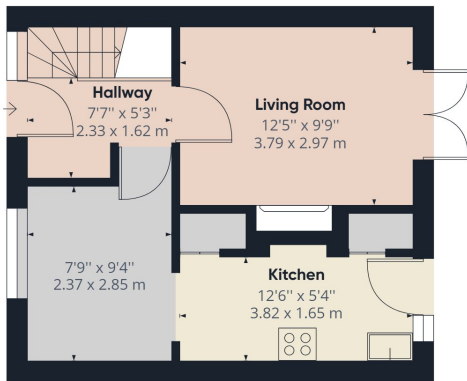
Bathroom 5'5" x 5'10" (1.64 m x 1.78 m) Shower over the bath, basin and WC.

Top floor bedroom 3 13'0" x 8'2" (3.95 m x 2.48 m) Double room.

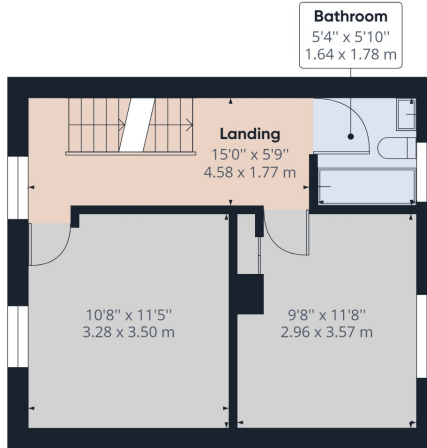
Top floor bedroom 4 14'4" x 7'1" (4.37 m x 2.17 m) Restricted headroom - single room.

Top floor Shower room 5'10" x 4'10" (1.79 m x 1.47 m) Shower cubicle with basin and WC.

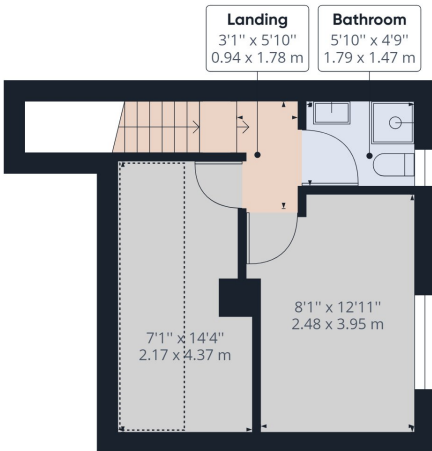
Council Tax Band: C



Ground Floor



Floor 1



Floor 2

Approximate total area⁽¹⁾

964.45 ft²
89.60 m²

Reduced headroom

47.03 ft²
4.37 m²

(1) Excluding balconies and terraces

Reduced headroom (below 1.5m/4.92ft)

While every attempt has been made to ensure accuracy, all measurements are approximate, not to scale. This floor plan is for illustrative purposes only.

GIRAFFE360

Applying for a Property

British or Irish Citizens must evidence their right to rent from the documents listed below.

Either:

- a British passport (current or expired)
- an Irish passport or passport card (current or expired)
- a certificate of registration or naturalisation as a British citizen

OR

Two of the following:

- a current UK driving licence (full or provisional)
- a full birth or adoption certificate from the UK, Guernsey, Jersey, the Isle of Man or Ireland
- a letter from your employer
- a letter from a British passport holder in an accepted profession
- a letter from a UK government department or local council
- proof that you currently receive benefits
- a letter from a British school, college, or university that you currently go to
- a Disclosure and Barring Service (DBS) certificate
- proof that you have served in the UK armed forces
- a letter from a private rented sector access scheme or a voluntary organisation assisting you with housing
- a letter confirming you have been released from prison within the past 6 months
- a letter confirming you are on probation from your offender manager
- a letter from the UK police about the theft of your passport

Non British or Irish Citizens will need to obtain a share code and including the following documentation to indicate the named person may stay in the UK. <https://www.gov.uk/prove-right-to-rent/get-a-share-code-online>

Either:

- a passport
- a travel document issued by the Home Office
- an immigration status document sent to you when you were given permission to stay in the UK

All of the above must include a Home Office endorsement. For example, a stamp or a vignette (sticker) inside. This must say you have one of the following

- indefinite leave to enter or indefinite leave to remain in the UK
- no time limit to your stay in the UK
- a certificate of entitlement to the right of abode
- exemption from immigration control
- limited leave to enter or limited leave to remain in the UK, or permission to stay for a time limited period - this must cover the time you'll be renting
- a certificate of entitlement to readmission to the UK

These checks need to be followed up either 12 months from the date of the previous check, or before the expiry of the person's right to live in the UK. Copies of these documents are kept and will also be sent to our reference company so they can be verified

Important

All applications and negotiations are subject to contract, successful referencing and landlord approval. The payment of the initial monies will be deemed as acceptance of these terms.

Deposit held during the tenancy:

The security deposit of no more than the equivalent of 5 weeks' rent (or 6 weeks' for a property with a rent of over £50,000 per year), is held during the tenancy and this, together with the initial rent payment, is to be received by Pocock & Shaw before the tenancy can commence.

Other costs a tenant may incur

In addition to the deposit and rent, a tenant may potentially be charged for the following when required:

1. A holding deposit of no more than one weeks' rent;
2. A default fee for late payment of rent (after 14 days);
3. Reasonable charges for lost keys or security fobs;
4. Costs associated with contract variation when requested by the tenant, at £50, or reasonable costs incurred if higher.
5. Costs associated with early termination of the tenancy, when requested by the tenant; and
6. Costs in respect of bills - utilities, communication services, TV licence, council tax and green deal or other energy efficiency charges.