



4 Meadow Rise | Lacey Green | Buckinghamshire | HP27 0QY



Property Features

- Three/four double bedrooms over two floors.
- Two shower rooms and bathroom.
- Kitchen/breakfast room, utility room.
- Sitting room with wood burner overlooking rear garden.
- Bright and spacious entrance reception area.
- Enclosed landscaped rear garden.
- Driveway parking for up to four cars.
- Cul de sac, village location with countryside views.
- Well placed for bus routes and train links.
- EPC 63 D / Council Tax Band F

Full Description

A highly versatile detached home, positioned in a cul-de-sac located within this highly prestigious and hill-top village.

The property, originally constructed around 1974, has benefitted from numerous alterations and improvements with palpable scope (Subject to planning) for further extensions.

Entrance porch leads to a spacious bright and airy reception area which comfortably accommodates a dining area. This area leads to the principle reception room, kitchen/breakfast room and study/bedroom four. A double aspect sitting room offers a pleasant outlook over the rear garden and incorporates a feature wood-burner (Fitted 2016.) The study/bedroom 4 is a highly versatile room with patio doors to the rear garden has been used for a multitude of purposes, with an adjoining downstairs shower room which is accessed from the reception hallway offers further scope to the study/bedroom four.

The garage was partially converted to accommodate the dining area and utility room. The remainder provides storage. Kitchen/Breakfast room, features a range Cherry wood units, granite composite work surfaces. A range of integrated appliances to include a five ring electric induction hob, double oven, dishwasher, fridge, an insinkerator, water softener and tiled flooring with under floor heating, natural effect marble flooring, A breakfast bar/peninsular acts as a natural divider. Door to garden.

The utility room features a range of units and work surfaces and space for appliances.

A spacious landing leads to three first floor bedrooms. The main bedroom features a full height window with partial views over the Chiltern Hills makes this a bright and airy room. En-suite facilities feature a double width shower with rain-forest shower. Bedroom three is an attractive double aspect room sharing similar views to bedroom one. The family bathroom with tiling to floor and walls features a three piece suite.

Outside

The driveway, resurfaced (2022) with parking for up to four cars incorporates an area of lawn. Adjoining the rear of the property is a patio/seating area in natural stone. Path in natural stone runs the length of the garden leading to a rear seating area. Gated side access leads to the front garden. There are flowering areas, some trees and shrubs and fencing. External power sockets and feature lighting were installed in 2021. There is a shed/workshop with power supply.



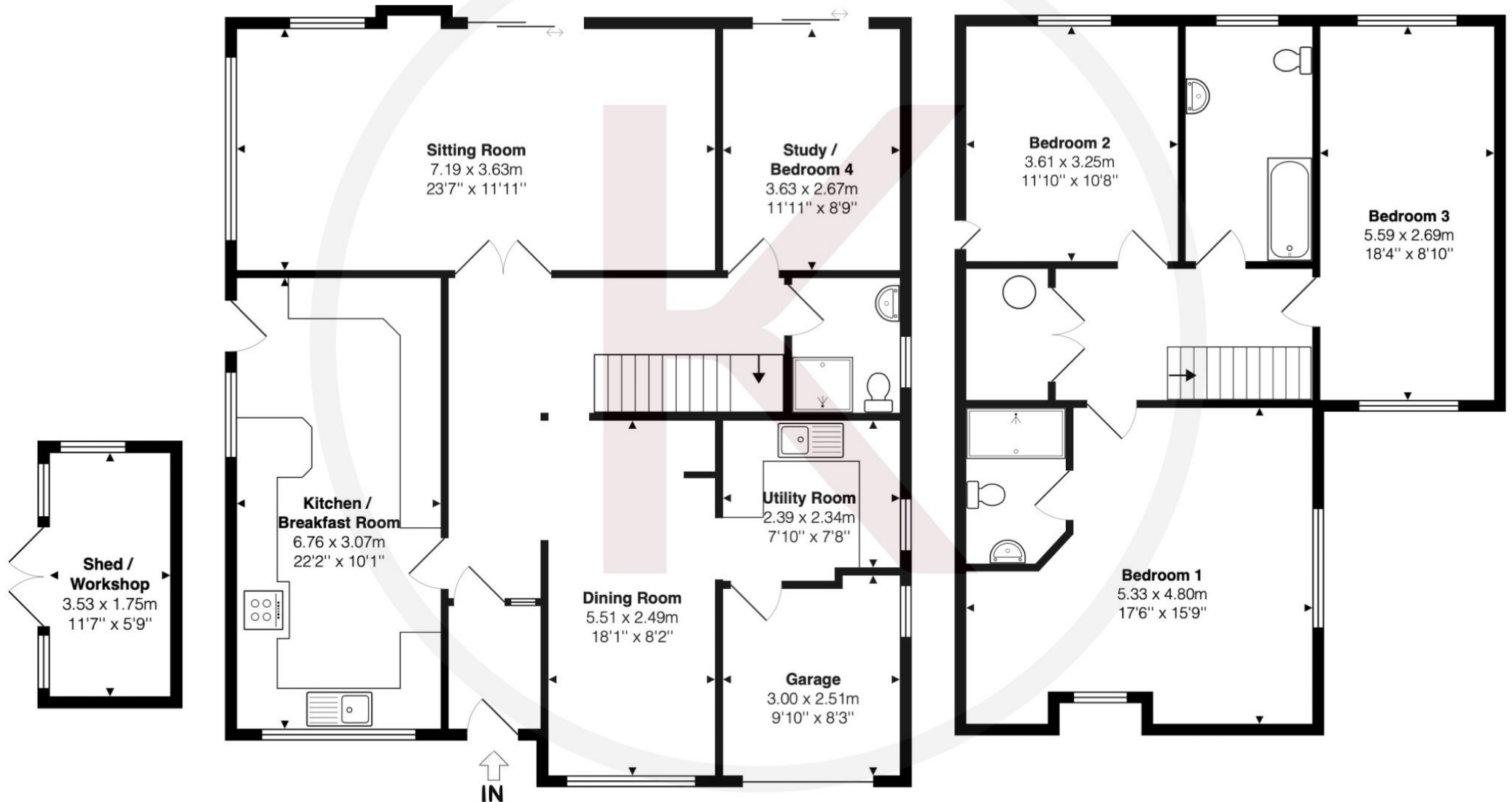












Kingshills Estate Agents
Comet Studios
Amersham
Buckinghamshire HP7 0PX

01844 390 200
hello@kingshills.co.uk
kingshills.co.uk

Agents Note: Whilst every care has been taken to prepare these particulars, they are for guidance purposes only. All measurements are for general guidance purposes only and whilst every care has been taken to ensure accuracy, they should not be relied upon and potential buyers/tenants are advised to recheck the measurements