



**3 Bedroom 2 bath Flat,
Harbet Rd, Merchnt Square, London W2**

<https://qinvestments.london>



Three Bedroom Apartment in Merchant Square, Paddington, London W2.

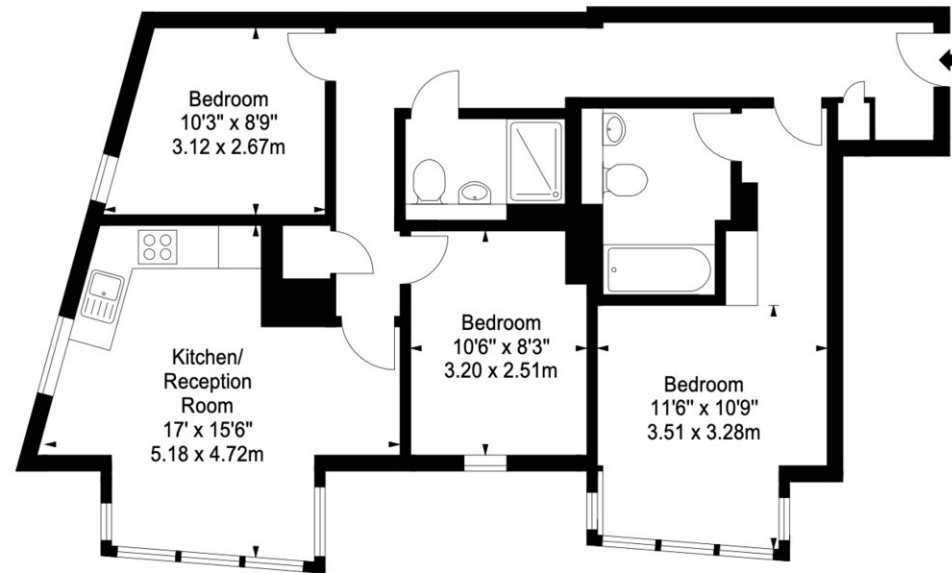
- AC/comfort cooling
- Luxury furniture and fully fitted kitchen
- Porter and building manager on site
- 24/7 emergency line
- Underground Parking
- Modern building
- Lift
- Next to shops and restaurants

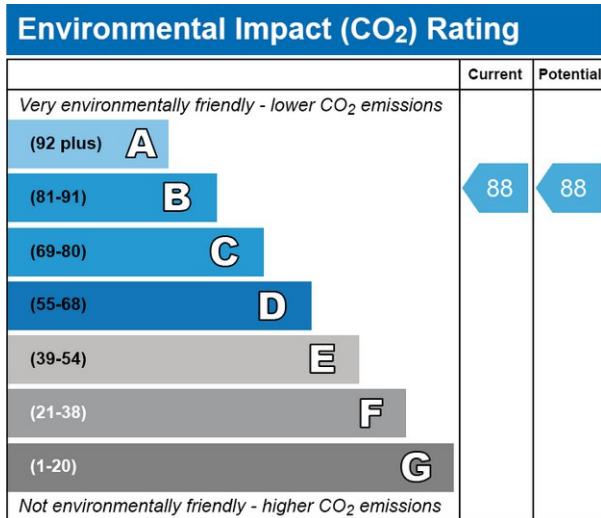
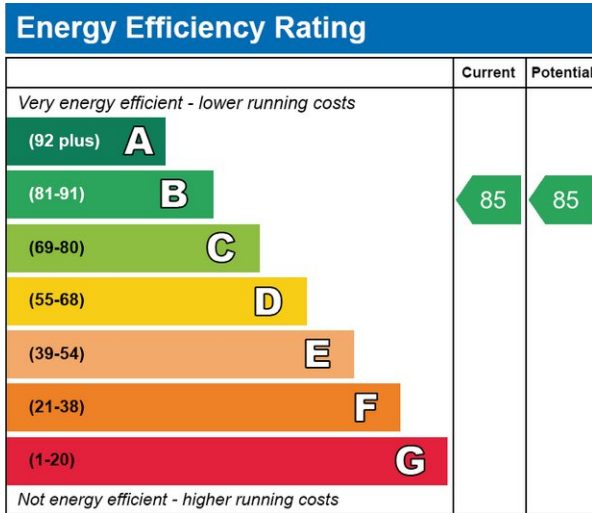
Harbet Rd, Merchnt Square, London W2

Three Bedroom Apartment in Merchant Square, Paddington, London W2.

Residents can enjoy the spacious open-plan kitchen and living area, with far-reaching views across the London rooftops. The large sofa is perfect for relaxing and watching TV, whilst the modern four-seater dining table is ideal for sharing lovely meals with family and friends. The apartment furthermore benefits from Wi-Fi, and there are laptop friendly surfaces for home working.

The apartment is located in the vibrant and exclusive waterside building of Merchant Square, in the newly developed Paddington Basin. This contemporary block comprises 60 luxury 1,2,3, and 4-bedroom apartments set over 15 storeys. Many of the apartments boast beautiful canal views, as well views across the London skyline. The building also benefits from concierge service, 24/7 security and stunning landscaped spaces in its outdoor garden square. All the apartments have comfort cooling.





CONTACT US

Have a question for us? Please get in touch.

Q INVESTMENTS INTERNATIONAL LTD

T: +44 (0) 7985 487333

E: office@qinvestments.london

INVESTMENTS, REAL ESTATE & LIFESTYLE

Stay connected

Please visit our social media pages.

You can now find us on [Facebook](#), [Twitter](#), [Linkedin](#) and [Instagram](#) and many more!